

U.S. Drought Monitor

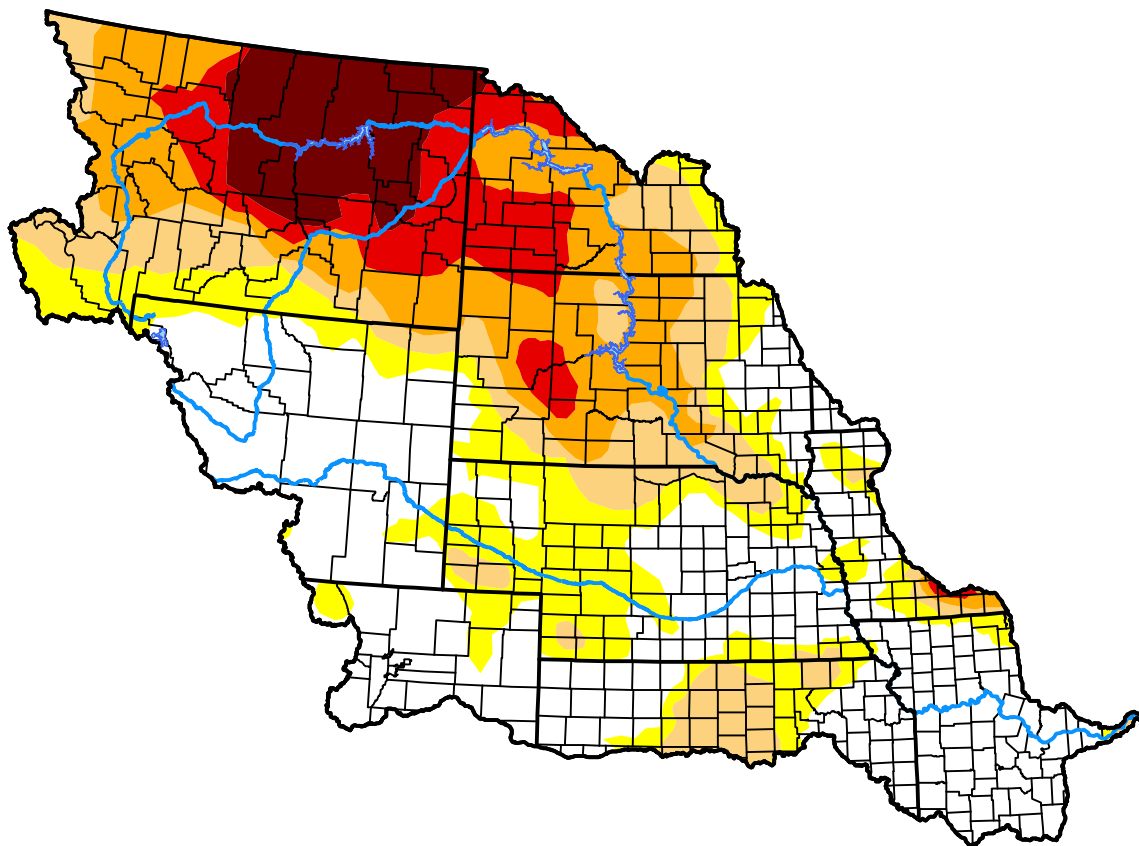
Missouri Basin RFC

August 29, 2017
 (Released Thursday, Aug. 31, 2017)

Valid 8 a.m. EDT

Drought Conditions (Percent Area)

	None	D0-D4	D1-D4	D2-D4	D3-D4	D4
Current	38.35	61.65	43.90	30.15	15.08	7.11
Last Week <i>08-24-2017</i>	38.70	61.30	44.35	28.63	13.76	3.46
3 Months Ago <i>06-01-2017</i>	72.13	27.87	5.30	0.00	0.00	0.00
Start of Calendar Year <i>01-05-2017</i>	55.38	44.62	15.99	1.41	0.00	0.00
Start of Water Year <i>09-29-2016</i>	68.21	31.79	12.24	3.65	0.26	0.00
One Year Ago <i>09-01-2016</i>	58.86	41.14	15.20	4.93	0.82	0.00



Intensity:

- None
- D0 Abnormally Dry
- D1 Moderate Drought
- D2 Severe Drought
- D3 Extreme Drought
- D4 Exceptional Drought

The Drought Monitor focuses on broad-scale conditions. Local conditions may vary. For more information on the Drought Monitor, go to <https://droughtmonitor.unl.edu/About.aspx>

Author:

Chris Fenimore
 NCEI/NESDIS/NOAA

