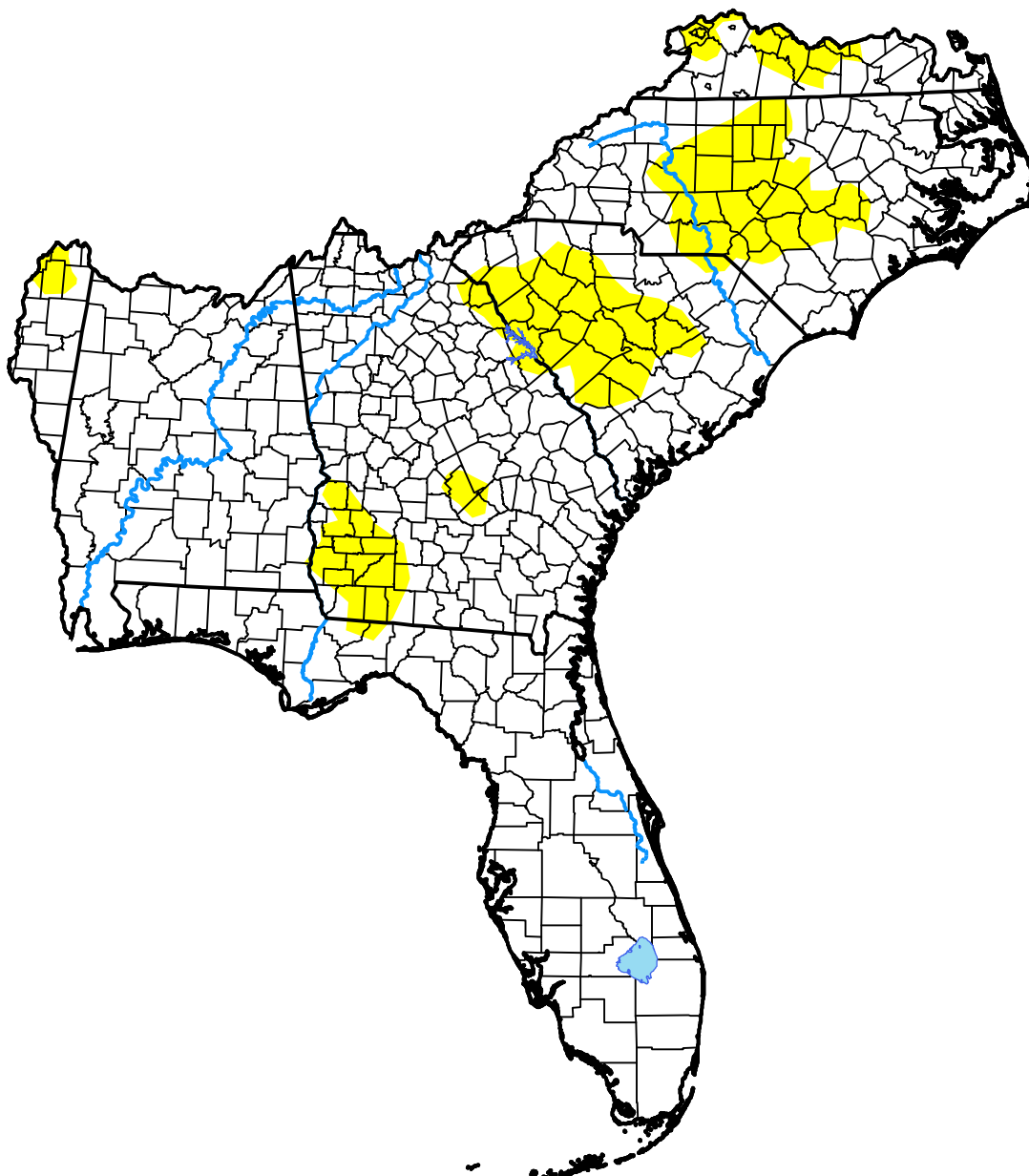


U.S. Drought Monitor Southeast RFC

August 29, 2017
(Released Thursday, Aug. 31, 2017)

Valid 8 a.m. EDT



Drought Conditions (Percent Area)

	None	D0-D4	D1-D4	D2-D4	D3-D4	D4
Current	85.46	14.54	0.00	0.00	0.00	0.00
Last Week <i>08-24-2017</i>	91.49	8.51	0.00	0.00	0.00	0.00
3 Months Ago <i>06-01-2017</i>	59.80	40.20	25.17	12.79	3.41	0.00
Start of Calendar Year <i>01-05-2017</i>	26.36	73.64	38.99	20.89	9.16	0.00
Start of Water Year <i>09-29-2016</i>	56.39	43.61	23.46	11.80	4.04	0.16
One Year Ago <i>09-01-2016</i>	56.55	43.45	19.18	8.79	1.27	0.00

Intensity:



The Drought Monitor focuses on broad-scale conditions. Local conditions may vary. For more information on the Drought Monitor, go to <https://droughtmonitor.unl.edu/About.aspx>

Author:

Chris Fenimore
NCEI/NESDIS/NOAA

