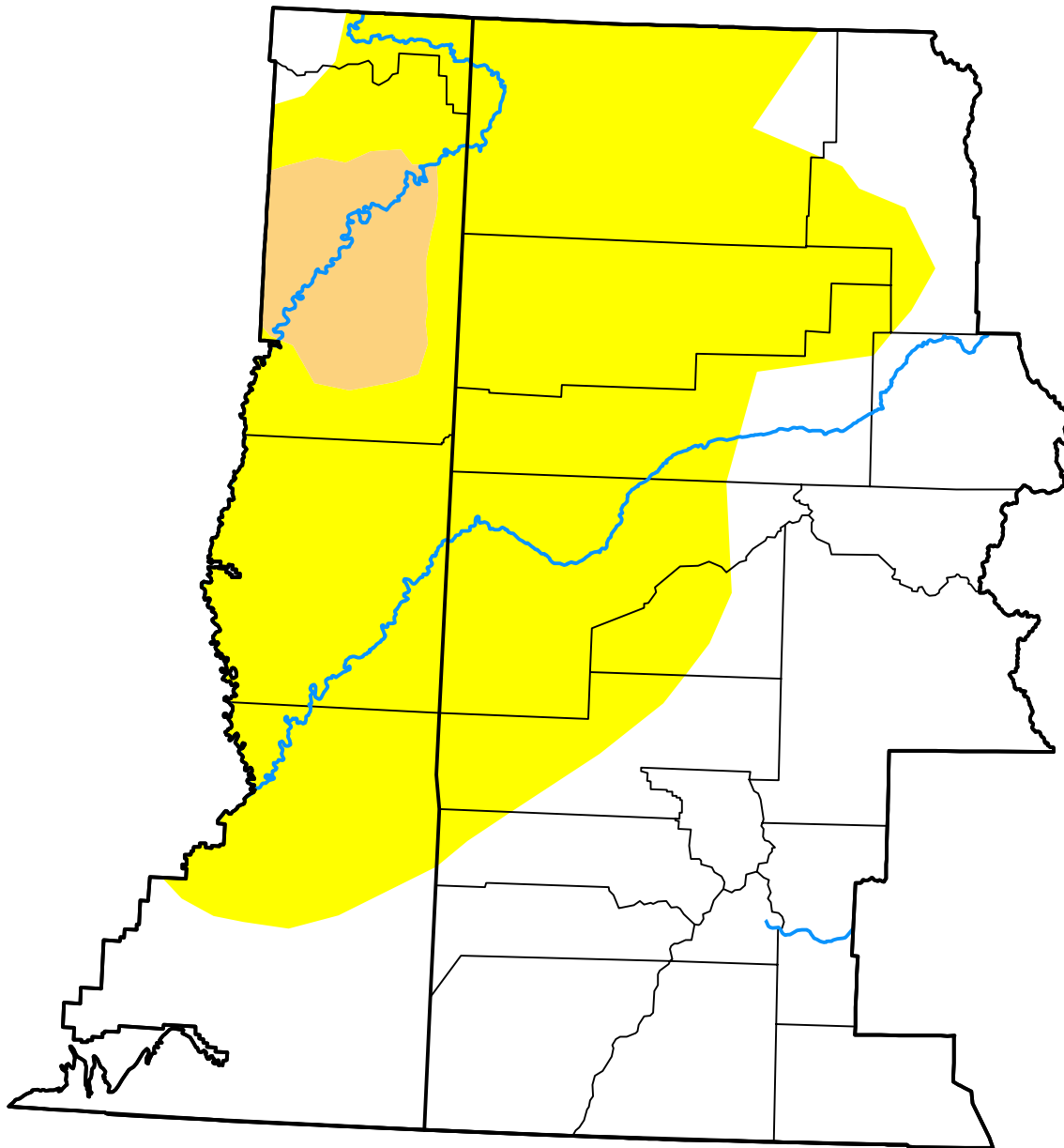


U.S. Drought Monitor

Grand Junction, CO WFO

August 29, 2017
 (Released Thursday, Aug. 31, 2017)
 Valid 8 a.m. EDT



Drought Conditions (Percent Area)

	None	D0-D4	D1-D4	D2-D4	D3-D4	D4
Current	48.80	51.20	4.21	0.00	0.00	0.00
Last Week <i>08-24-2017</i>	54.22	45.78	4.21	0.00	0.00	0.00
3 Months Ago <i>06-01-2017</i>	77.03	22.97	0.00	0.00	0.00	0.00
Start of Calendar Year <i>01-05-2017</i>	84.10	15.90	0.00	0.00	0.00	0.00
Start of Water Year <i>09-29-2016</i>	74.18	25.82	0.00	0.00	0.00	0.00
One Year Ago <i>09-01-2016</i>	77.40	22.60	0.00	0.00	0.00	0.00

Intensity:

- None
- D0 Abnormally Dry
- D1 Moderate Drought
- D2 Severe Drought
- D3 Extreme Drought
- D4 Exceptional Drought

The Drought Monitor focuses on broad-scale conditions. Local conditions may vary. For more information on the Drought Monitor, go to <https://droughtmonitor.unl.edu/About.aspx>

Author:

Chris Fenimore
 NCEI/NESDIS/NOAA

