

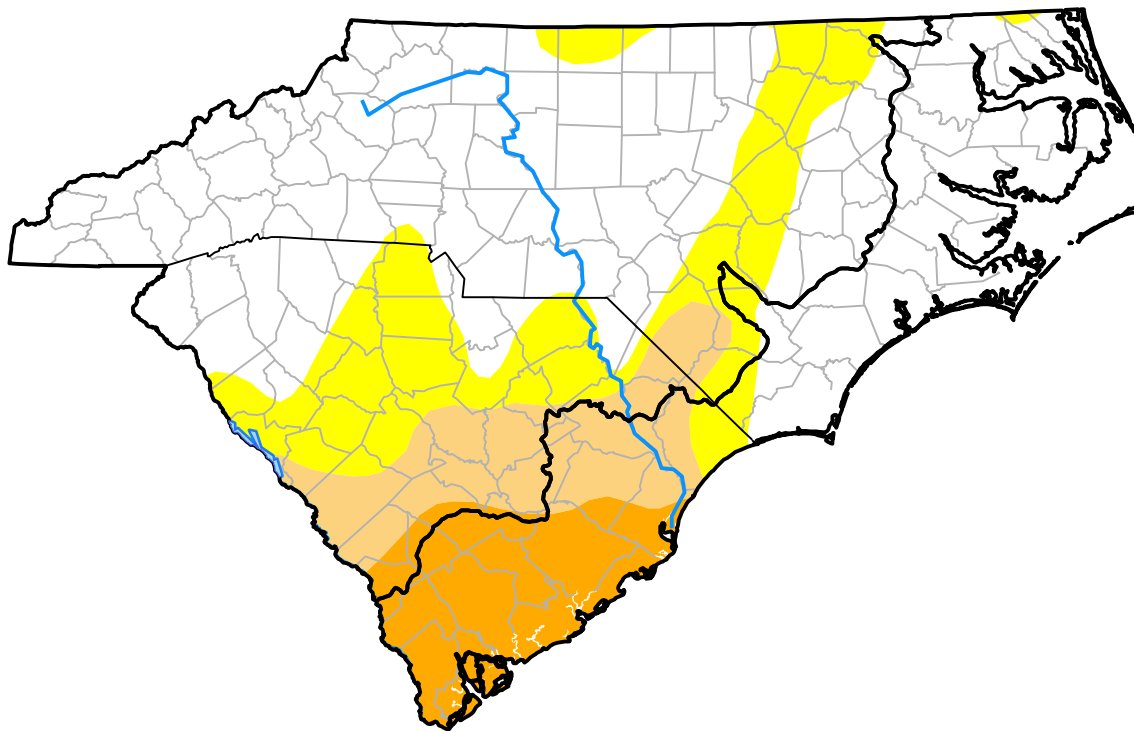
# Carolinas RDEWS and Surrounding Areas

(Released Thursday, Apr. 19, 2018)

10:00 a.m. EDT

Drought Conditions (Percent Area)

	None	D0	D1	D2	D3	D4
<b>Current</b>	60.23	19.09	10.89	9.79	0.00	0.00
<b>Last Week</b> <i>04-12-2018</i>	46.90	32.24	11.24	9.61	0.00	0.00
<b>3 Months Ago</b> <i>01-18-2018</i>	25.86	44.04	30.10	0.00	0.00	0.00
<b>Start of Calendar Year</b> <i>01-04-2018</i>	20.18	49.71	30.11	0.00	0.00	0.00
<b>Start of Water Year</b> <i>09-28-2017</i>	90.33	9.67	0.00	0.00	0.00	0.00
<b>One Year Ago</b> <i>04-20-2017</i>	29.40	34.34	32.13	3.51	0.63	0.00



Intensity:

- None
- D0 Abnormally Dry
- D1 Moderate Drought
- D2 Severe Drought
- D3 Extreme Drought
- D4 Exceptional Drought

The Drought Monitor focuses on broad-scale conditions. Local conditions may vary. For more information on the Drought Monitor, go to <https://droughtmonitor.unl.edu/About.aspx>

Author:

Brad Rippey  
U.S. Department of Agriculture

