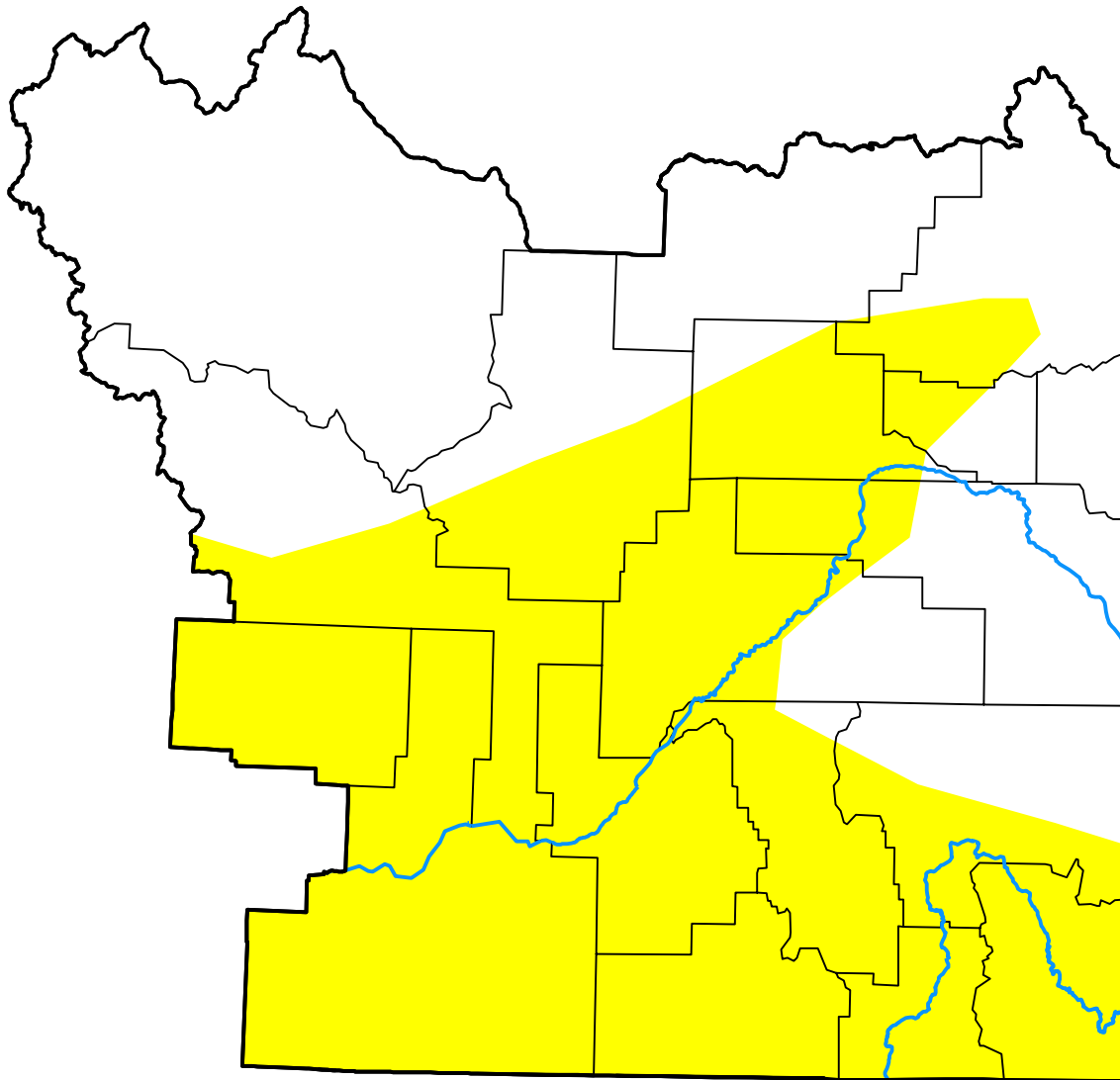


# U.S. Drought Monitor

## Pocatello, ID WFO

**April 17, 2018**  
 (Released Thursday, Apr. 19, 2018)  
 Valid 8 a.m. EDT



*Drought Conditions (Percent Area)*

	None	D0-D4	D1-D4	D2-D4	D3-D4	D4
<b>Current</b>	47.04	52.96	0.00	0.00	0.00	0.00
<b>Last Week</b> <i>04-12-2018</i>	47.04	52.96	0.00	0.00	0.00	0.00
<b>3 Months Ago</b> <i>01-18-2018</i>	99.38	0.62	0.00	0.00	0.00	0.00
<b>Start of Calendar Year</b> <i>01-04-2018</i>	99.93	0.07	0.00	0.00	0.00	0.00
<b>Start of Water Year</b> <i>09-28-2017</i>	66.46	33.54	0.00	0.00	0.00	0.00
<b>One Year Ago</b> <i>04-20-2017</i>	100.00	0.00	0.00	0.00	0.00	0.00

***Intensity:***



*The Drought Monitor focuses on broad-scale conditions. Local conditions may vary. For more information on the Drought Monitor, go to <https://droughtmonitor.unl.edu/About.aspx>*

***Author:***

Brad Rippey  
 U.S. Department of Agriculture



**droughtmonitor.unl.edu**