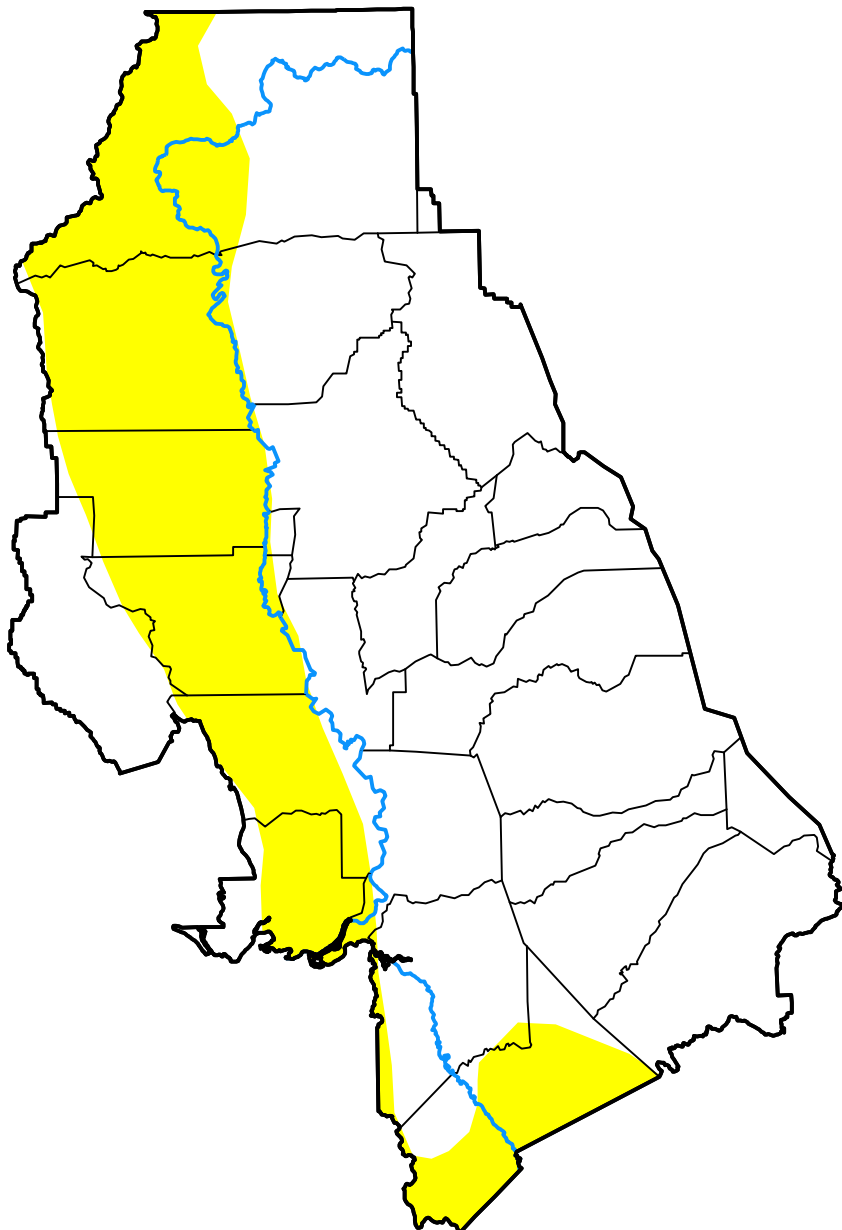


U.S. Drought Monitor

Sacramento, CA WFO

April 17, 2018
 (Released Thursday, Apr. 19, 2018)
 Valid 8 a.m. EDT



Drought Conditions (Percent Area)

	None	D0-D4	D1-D4	D2-D4	D3-D4	D4
Current	70.27	29.73	0.00	0.00	0.00	0.00
Last Week <i>04-12-2018</i>	70.27	29.73	0.00	0.00	0.00	0.00
3 Months Ago <i>01-18-2018</i>	100.00	0.00	0.00	0.00	0.00	0.00
Start of Calendar Year <i>01-04-2018</i>	100.00	0.00	0.00	0.00	0.00	0.00
Start of Water Year <i>09-28-2017</i>	100.00	0.00	0.00	0.00	0.00	0.00
One Year Ago <i>04-20-2017</i>	100.00	0.00	0.00	0.00	0.00	0.00

Intensity:

- None
- D0 Abnormally Dry
- D1 Moderate Drought
- D2 Severe Drought
- D3 Extreme Drought
- D4 Exceptional Drought

The Drought Monitor focuses on broad-scale conditions. Local conditions may vary. For more information on the Drought Monitor, go to <https://droughtmonitor.unl.edu/About.aspx>

Author:

Brad Rippey
 U.S. Department of Agriculture

