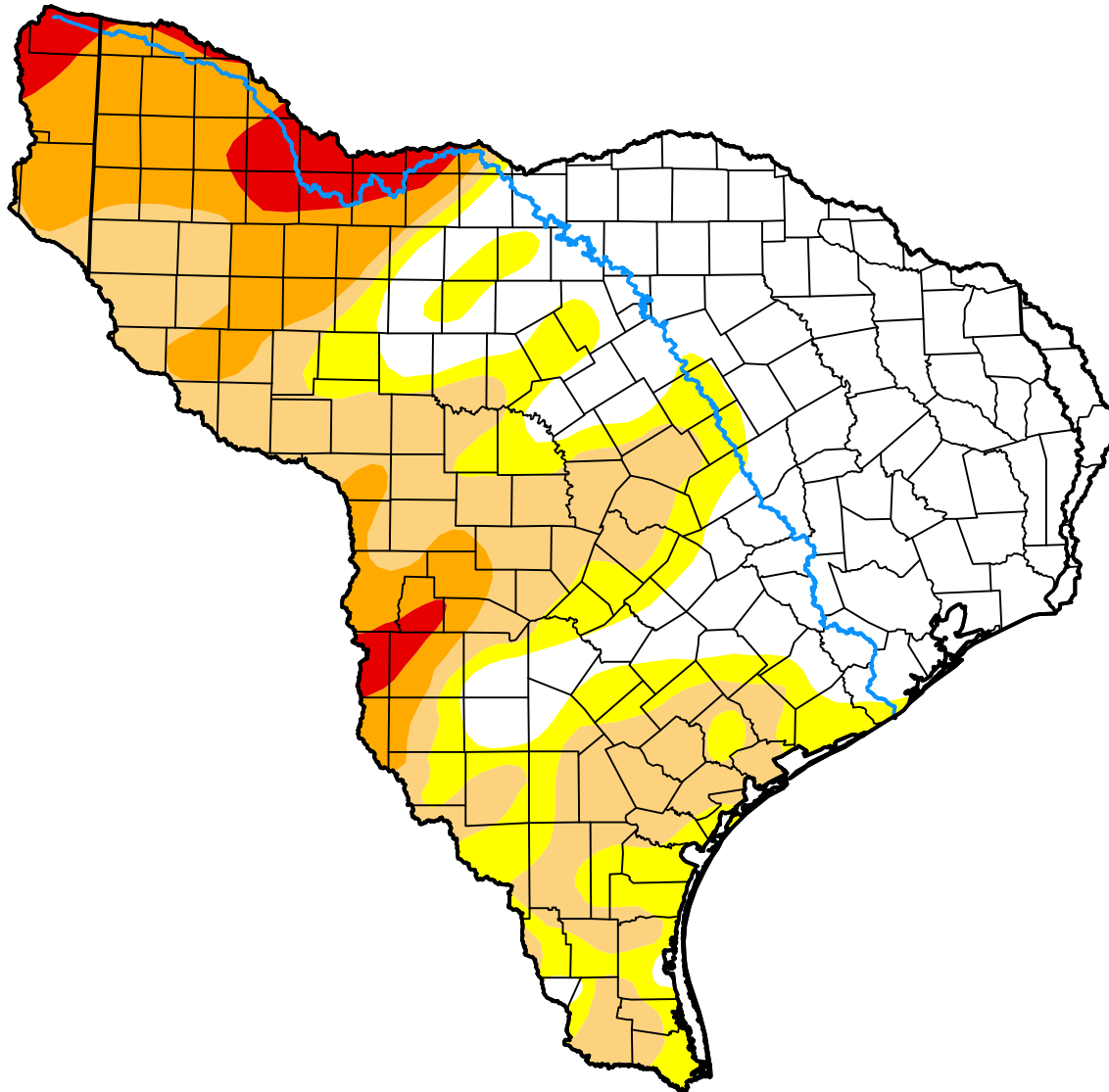


U.S. Drought Monitor

Texas-Gulf Watershed

April 24, 2018
 (Released Thursday, Apr. 26, 2018)
 Valid 8 a.m. EDT



Drought Conditions (Percent Area)

	None	D0	D1	D2	D3	D4
Current	41.95	16.60	23.51	13.79	4.15	0.00
Last Week <i>04-19-2018</i>	44.35	17.13	21.46	13.67	3.40	0.00
3 Months Ago <i>01-25-2018</i>	13.08	33.79	45.16	7.71	0.25	0.00
Start of Calendar Year <i>01-04-2018</i>	32.25	35.73	28.99	3.02	0.00	0.00
Start of Water Year <i>09-28-2017</i>	67.08	28.10	4.77	0.04	0.00	0.00
One Year Ago <i>04-27-2017</i>	91.74	6.71	1.54	0.00	0.00	0.00

Intensity:

- None
- D0 Abnormally Dry
- D1 Moderate Drought
- D2 Severe Drought
- D3 Extreme Drought
- D4 Exceptional Drought

The Drought Monitor focuses on broad-scale conditions. Local conditions may vary. For more information on the Drought Monitor, go to <https://droughtmonitor.unl.edu/About.aspx>

Author:

Brad Rippey
 U.S. Department of Agriculture



droughtmonitor.unl.edu