

# U.S. Drought Monitor

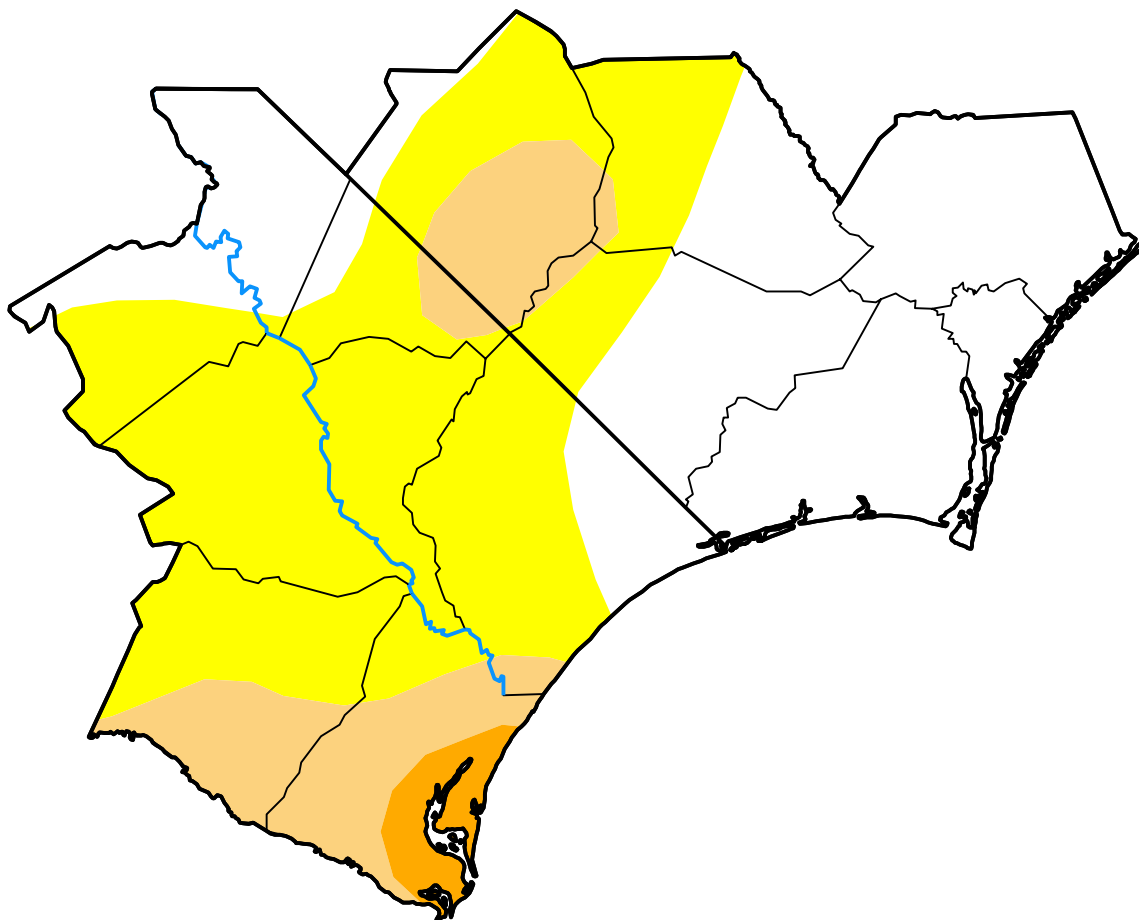
## Wilmington, NC WFO

**April 24, 2018**  
 (Released Thursday, Apr. 26, 2018)

Valid 8 a.m. EDT

*Drought Conditions (Percent Area)*

	None	D0-D4	D1-D4	D2-D4	D3-D4	D4
<b>Current</b>	41.20	58.80	15.79	2.28	0.00	0.00
<b>Last Week</b> <i>04-19-2018</i>	29.04	70.96	43.81	6.54	0.00	0.00
<b>3 Months Ago</b> <i>01-25-2018</i>	37.17	62.83	6.03	0.00	0.00	0.00
<b>Start of Calendar Year</b> <i>01-04-2018</i>	34.14	65.86	6.03	0.00	0.00	0.00
<b>Start of Water Year</b> <i>09-28-2017</i>	100.00	0.00	0.00	0.00	0.00	0.00
<b>One Year Ago</b> <i>04-27-2017</i>	67.06	32.94	6.47	0.00	0.00	0.00



***Intensity:***

- None
- D0 Abnormally Dry
- D1 Moderate Drought
- D2 Severe Drought
- D3 Extreme Drought
- D4 Exceptional Drought

*The Drought Monitor focuses on broad-scale conditions. Local conditions may vary. For more information on the Drought Monitor, go to <https://droughtmonitor.unl.edu/About.aspx>*

***Author:***

Brad Rippey  
 U.S. Department of Agriculture

