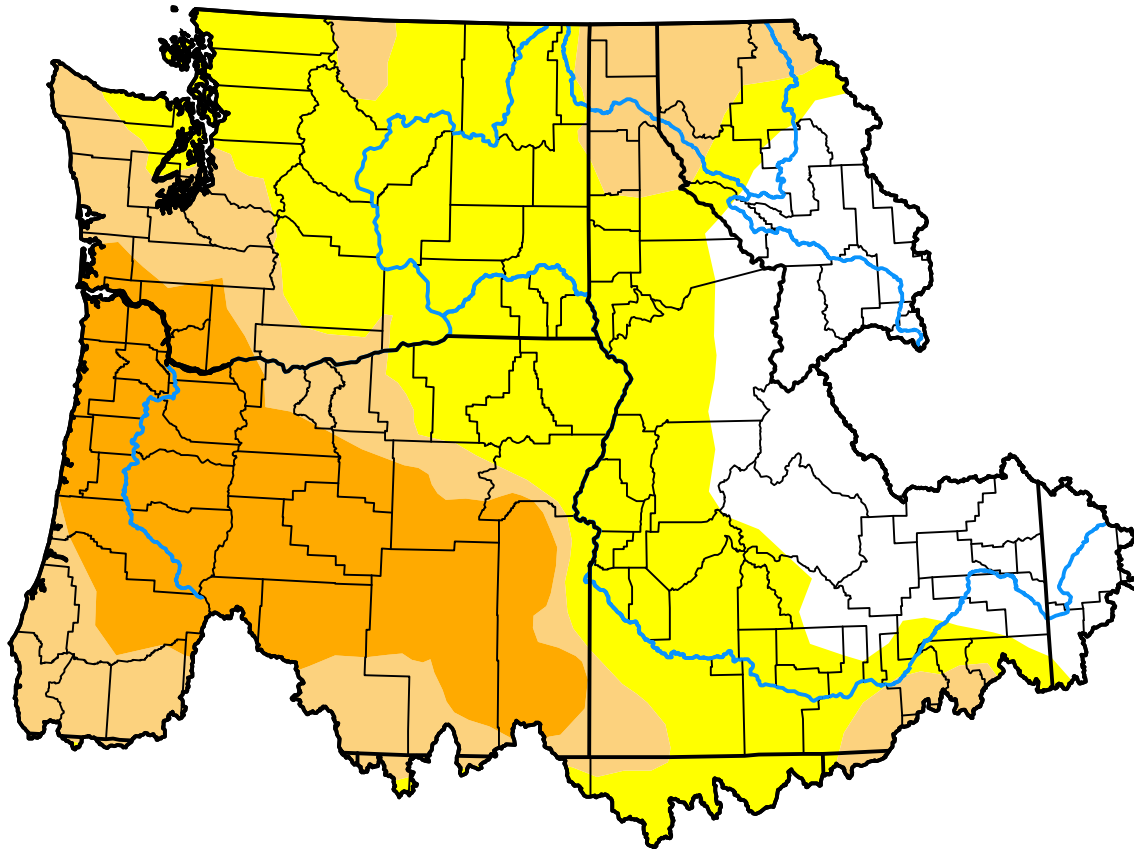


U.S. Drought Monitor

Pacific Northwest Watershed

July 31, 2018
 (Released Thursday, Aug. 2, 2018)
 Valid 8 a.m. EDT



Drought Conditions (Percent Area)

	None	D0	D1	D2	D3	D4
Current	17.70	40.24	21.37	20.69	0.00	0.00
Last Week <i>07-26-2018</i>	27.77	34.62	16.92	20.69	0.00	0.00
3 Months Ago <i>05-03-2018</i>	67.05	19.96	12.99	0.00	0.00	0.00
Start of Calendar Year <i>01-04-2018</i>	100.00	0.00	0.00	0.00	0.00	0.00
Start of Water Year <i>09-28-2017</i>	26.97	33.00	33.93	6.10	0.00	0.00
One Year Ago <i>08-03-2017</i>	57.11	38.52	4.37	0.00	0.00	0.00

Intensity:

- None
- D0 Abnormally Dry
- D1 Moderate Drought
- D2 Severe Drought
- D3 Extreme Drought
- D4 Exceptional Drought

The Drought Monitor focuses on broad-scale conditions. Local conditions may vary. For more information on the Drought Monitor, go to <https://droughtmonitor.unl.edu/About.aspx>

Author:

Chris Fenimore
 NCEI/NESDIS/NOAA

