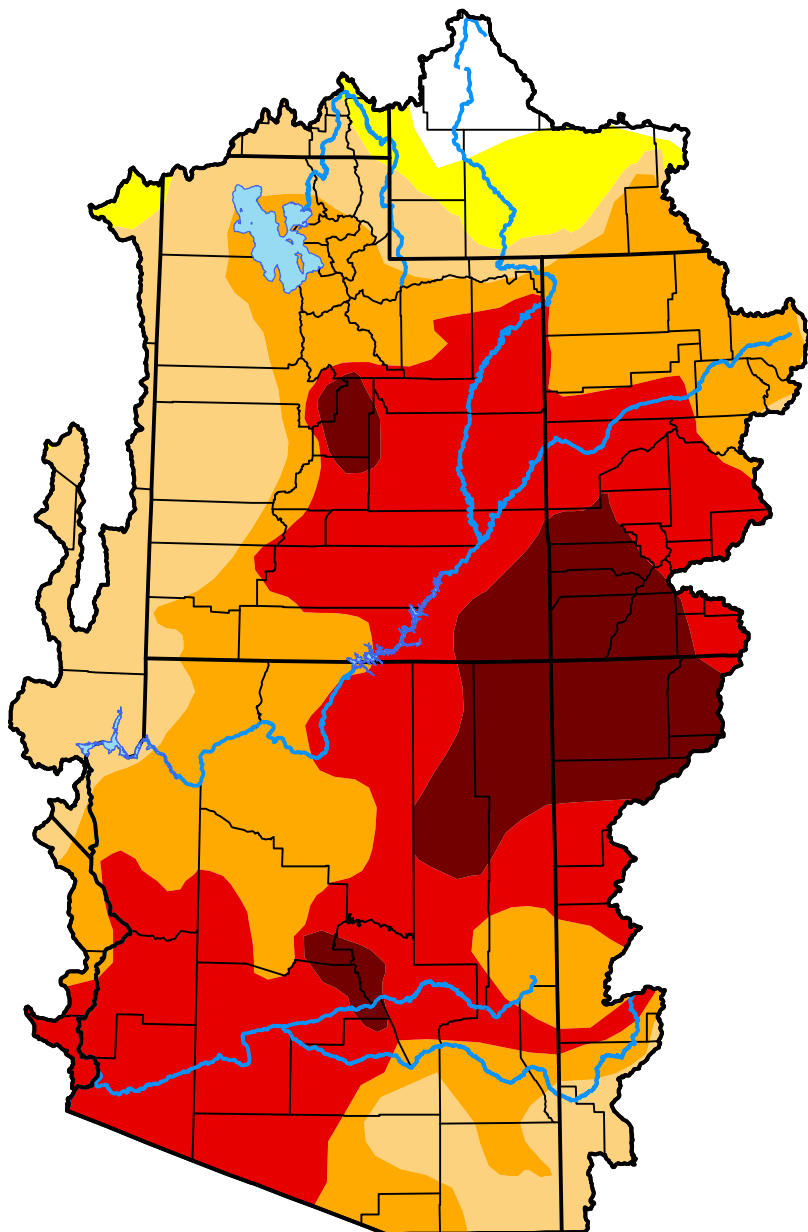


U.S. Drought Monitor

Colorado Basin RFC

July 31, 2018
 (Released Thursday, Aug. 2, 2018)
 Valid 8 a.m. EDT



Drought Conditions (Percent Area)

	None	D0-D4	D1-D4	D2-D4	D3-D4	D4
Current	2.04	97.96	94.12	74.21	45.99	11.78
Last Week <i>07-26-2018</i>	2.01	97.99	90.24	72.32	48.69	11.71
3 Months Ago <i>05-03-2018</i>	4.67	95.33	85.89	68.03	40.27	7.79
Start of Calendar Year <i>01-04-2018</i>	9.69	90.31	72.70	20.38	0.00	0.00
Start of Water Year <i>09-28-2017</i>	48.82	51.18	7.60	0.00	0.00	0.00
One Year Ago <i>08-03-2017</i>	63.74	36.26	5.85	0.16	0.00	0.00

Intensity:



The Drought Monitor focuses on broad-scale conditions. Local conditions may vary. For more information on the Drought Monitor, go to <https://droughtmonitor.unl.edu/About.aspx>

Author:

Chris Fenimore
 NCEI/NESDIS/NOAA

