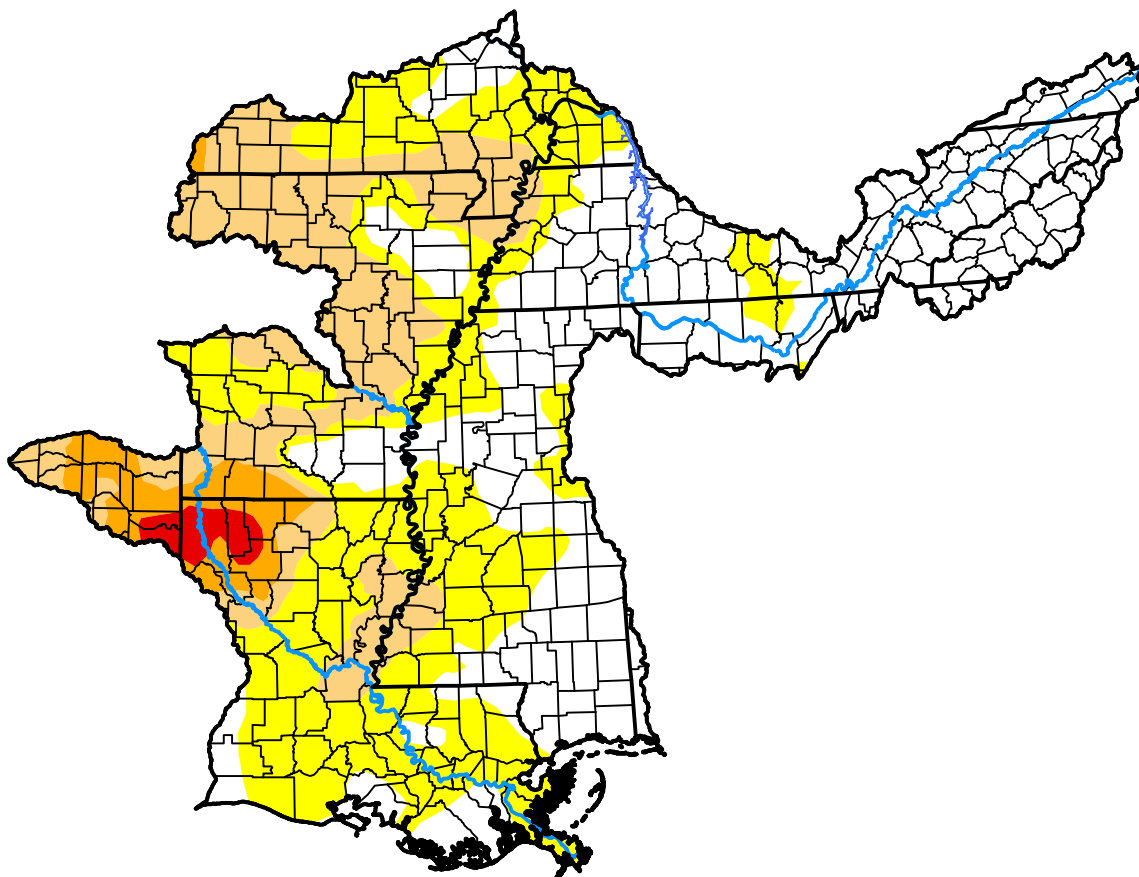


U.S. Drought Monitor

Lower Mississippi RFC

July 31, 2018
 (Released Thursday, Aug. 2, 2018)
 Valid 8 a.m. EDT



Drought Conditions (Percent Area)

	None	D0-D4	D1-D4	D2-D4	D3-D4	D4
Current	41.46	58.54	24.86	5.57	1.33	0.00
Last Week <i>07-26-2018</i>	47.08	52.92	21.74	7.73	1.10	0.00
3 Months Ago <i>05-03-2018</i>	99.53	0.47	0.00	0.00	0.00	0.00
Start of Calendar Year <i>01-04-2018</i>	37.69	62.31	40.22	19.77	1.06	0.00
Start of Water Year <i>09-28-2017</i>	73.03	26.97	0.68	0.00	0.00	0.00
One Year Ago <i>08-03-2017</i>	95.40	4.60	0.00	0.00	0.00	0.00

Intensity:



The Drought Monitor focuses on broad-scale conditions. Local conditions may vary. For more information on the Drought Monitor, go to <https://droughtmonitor.unl.edu/About.aspx>

Author:

Chris Fenimore
 NCEI/NESDIS/NOAA

