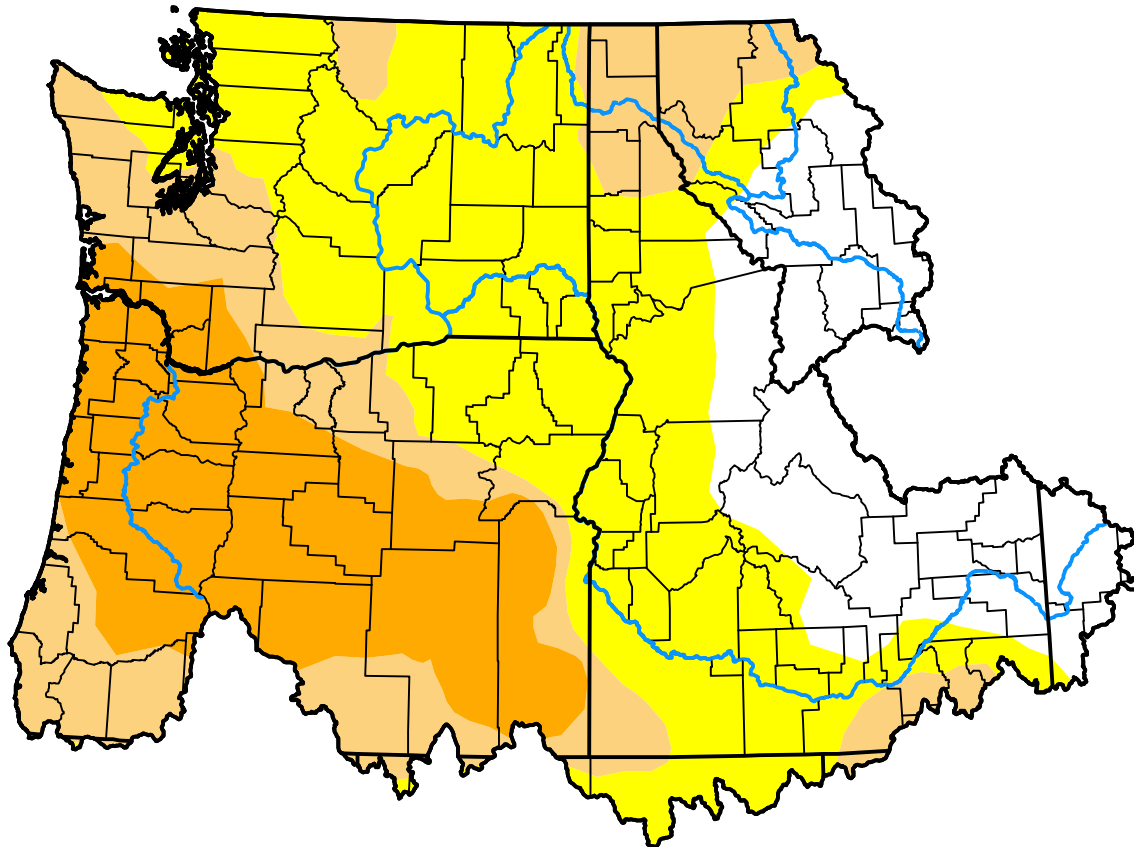


U.S. Drought Monitor Northwest RFC

July 31, 2018
(Released Thursday, Aug. 2, 2018)
Valid 8 a.m. EDT



Drought Conditions (Percent Area)

	None	D0-D4	D1-D4	D2-D4	D3-D4	D4
Current	17.67	82.33	42.06	20.70	0.00	0.00
Last Week <i>07-26-2018</i>	27.75	72.25	37.62	20.70	0.00	0.00
3 Months Ago <i>05-03-2018</i>	67.05	32.95	13.01	0.00	0.00	0.00
Start of Calendar Year <i>01-04-2018</i>	100.00	0.00	0.00	0.00	0.00	0.00
Start of Water Year <i>09-28-2017</i>	26.97	73.03	40.03	6.08	0.00	0.00
One Year Ago <i>08-03-2017</i>	57.10	42.90	4.38	0.00	0.00	0.00

Intensity:



The Drought Monitor focuses on broad-scale conditions. Local conditions may vary. For more information on the Drought Monitor, go to <https://droughtmonitor.unl.edu/About.aspx>

Author:

Chris Fenimore
NCEI/NESDIS/NOAA

