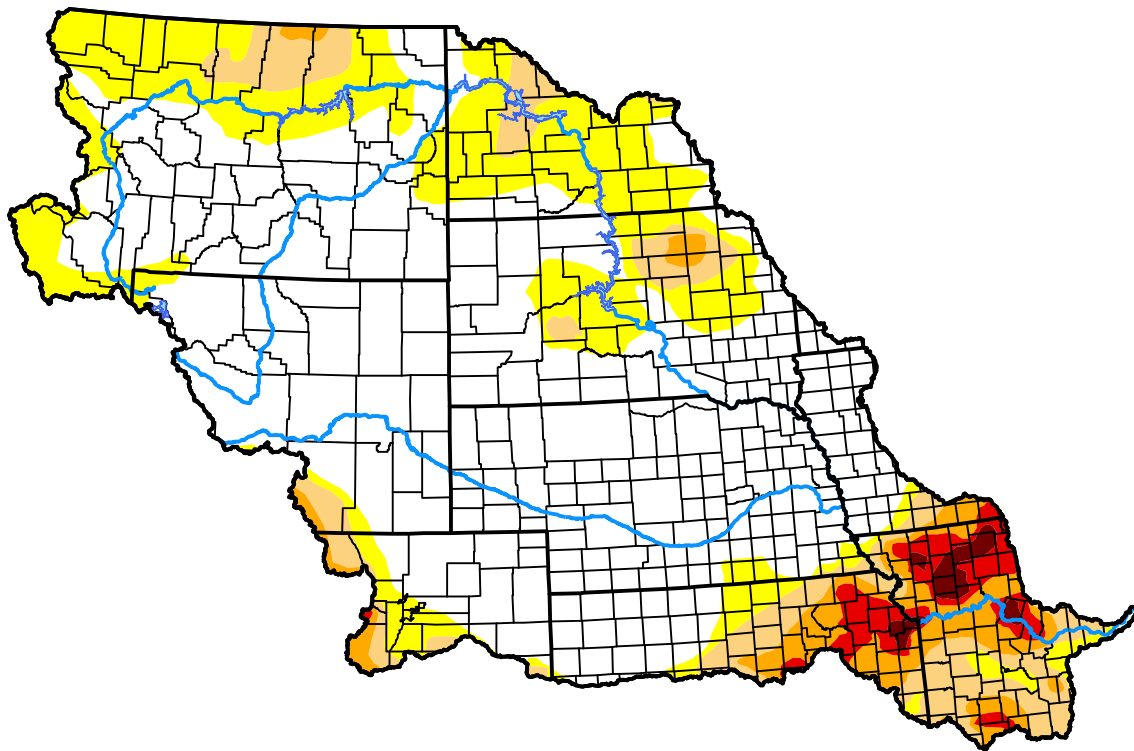


U.S. Drought Monitor Missouri Watershed

August 21, 2018
(Released Thursday, Aug. 23, 2018)
Valid 8 a.m. EDT



Drought Conditions (Percent Area)

	None	D0-D4	D1-D4	D2-D4	D3-D4	D4
Current	62.46	37.54	16.38	7.83	3.12	0.76
Last Week <i>08-16-2018</i>	62.50	37.50	16.62	8.68	4.28	1.06
3 Months Ago <i>05-24-2018</i>	67.88	32.12	15.75	1.70	0.11	0.00
Start of Calendar Year <i>01-04-2018</i>	22.90	77.10	29.23	11.42	4.42	0.00
Start of Water Year <i>09-28-2017</i>	45.50	54.50	38.62	25.11	13.60	5.11
One Year Ago <i>08-24-2017</i>	38.73	61.27	44.30	28.70	13.80	3.47

Intensity:



The Drought Monitor focuses on broad-scale conditions. Local conditions may vary. For more information on the Drought Monitor, go to <https://droughtmonitor.unl.edu/About.aspx>

Author:

Jessica Blunden
NCEI/NOAA



droughtmonitor.unl.edu