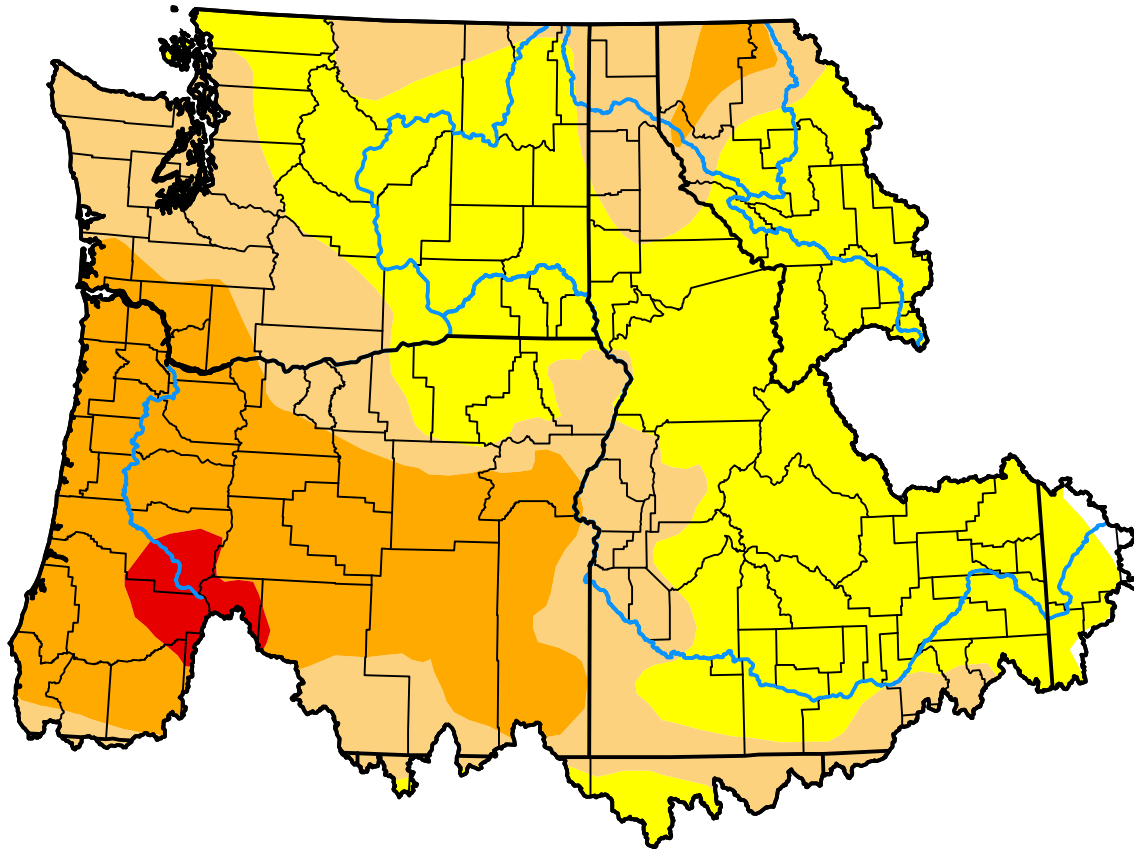


U.S. Drought Monitor

Pacific Northwest Watershed

August 21, 2018
 (Released Thursday, Aug. 23, 2018)
 Valid 8 a.m. EDT



Drought Conditions (Percent Area)

	None	D0	D1	D2	D3	D4
Current	0.40	45.06	28.77	24.06	1.71	0.00
Last Week <i>08-16-2018</i>	5.85	39.61	28.77	24.06	1.71	0.00
3 Months Ago <i>05-24-2018</i>	69.84	14.95	8.81	6.40	0.00	0.00
Start of Calendar Year <i>01-04-2018</i>	100.00	0.00	0.00	0.00	0.00	0.00
Start of Water Year <i>09-28-2017</i>	26.97	33.00	33.93	6.10	0.00	0.00
One Year Ago <i>08-24-2017</i>	35.67	49.51	11.36	3.46	0.00	0.00

Intensity:



The Drought Monitor focuses on broad-scale conditions. Local conditions may vary. For more information on the Drought Monitor, go to <https://droughtmonitor.unl.edu/About.aspx>

Author:

Jessica Blunden
 NCEI/NOAA

