

# U.S. Drought Monitor

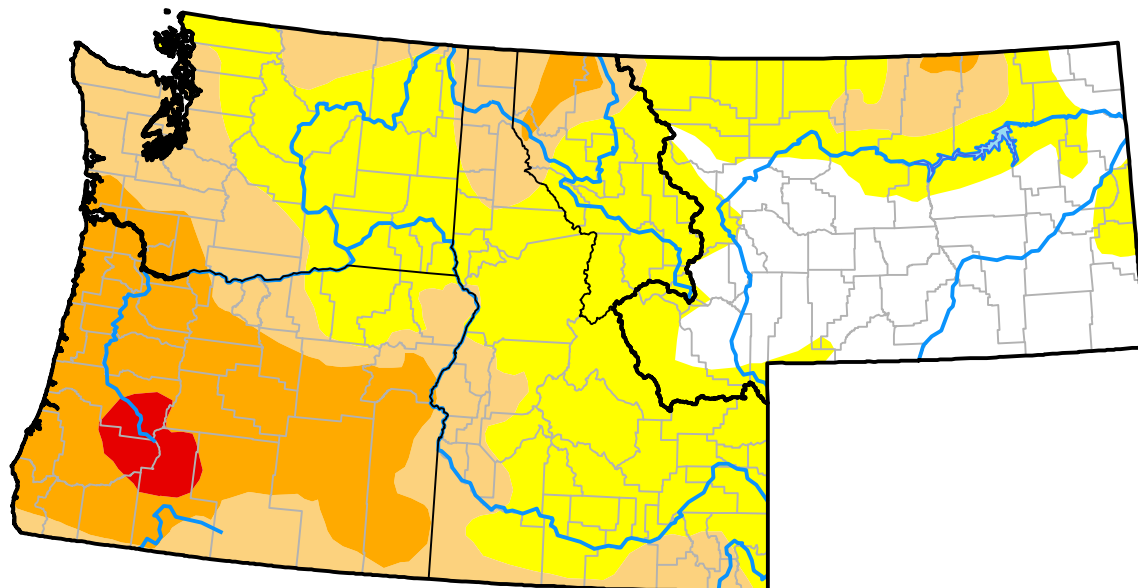
## Pacific Northwest RDEWS

**August 21, 2018**  
 (Released Thursday, Aug. 23, 2018)

Valid 8 a.m. EDT

*Drought Conditions (Percent Area)*

	None	D0-D4	D1-D4	D2-D4	D3-D4	D4
<b>Current</b>	0.01	99.99	56.79	27.36	2.19	0.00
<b>Last Week</b> <i>08-16-2018</i>	4.09	95.91	56.79	27.36	2.19	0.00
<b>3 Months Ago</b> <i>05-24-2018</i>	67.99	32.01	16.94	6.52	0.00	0.00
<b>Start of Calendar Year</b> <i>01-04-2018</i>	99.99	0.01	0.00	0.00	0.00	0.00
<b>Start of Water Year</b> <i>09-28-2017</i>	26.16	73.84	40.16	6.10	0.00	0.00
<b>One Year Ago</b> <i>08-24-2017</i>	35.33	64.67	14.86	3.47	0.00	0.00



***Intensity:***



*The Drought Monitor focuses on broad-scale conditions. Local conditions may vary. For more information on the Drought Monitor, go to <https://droughtmonitor.unl.edu/About.aspx>*

***Author:***

Jessica Blunden  
 NCEI/NOAA



**droughtmonitor.unl.edu**