

# U.S. Drought Monitor

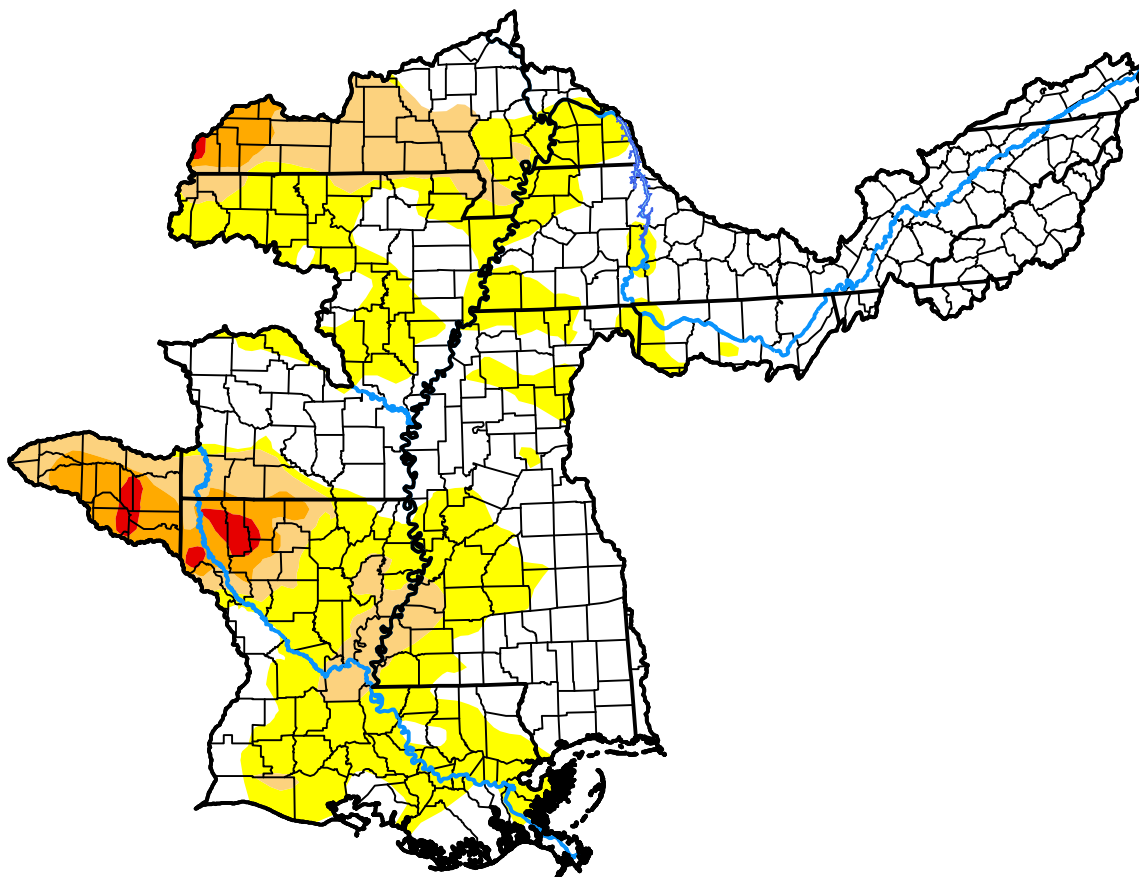
## Lower Mississippi RFC

**August 21, 2018**  
 (Released Thursday, Aug. 23, 2018)

Valid 8 a.m. EDT

Drought Conditions (Percent Area)

	None	D0-D4	D1-D4	D2-D4	D3-D4	D4
<b>Current</b>	53.09	46.91	16.34	4.99	0.89	0.00
<b>Last Week</b> <i>08-16-2018</i>	43.69	56.31	25.93	8.50	1.05	0.00
<b>3 Months Ago</b> <i>05-24-2018</i>	84.74	15.26	0.18	0.00	0.00	0.00
<b>Start of Calendar Year</b> <i>01-04-2018</i>	37.69	62.31	40.22	19.77	1.06	0.00
<b>Start of Water Year</b> <i>09-28-2017</i>	73.03	26.97	0.68	0.00	0.00	0.00
<b>One Year Ago</b> <i>08-24-2017</i>	99.53	0.47	0.00	0.00	0.00	0.00



**Intensity:**



The Drought Monitor focuses on broad-scale conditions. Local conditions may vary. For more information on the Drought Monitor, go to <https://droughtmonitor.unl.edu/About.aspx>

**Author:**

Jessica Blunden  
 NCEI/NOAA

