

# U.S. Drought Monitor

## Mobile, AL/Pensacola, FL WFO

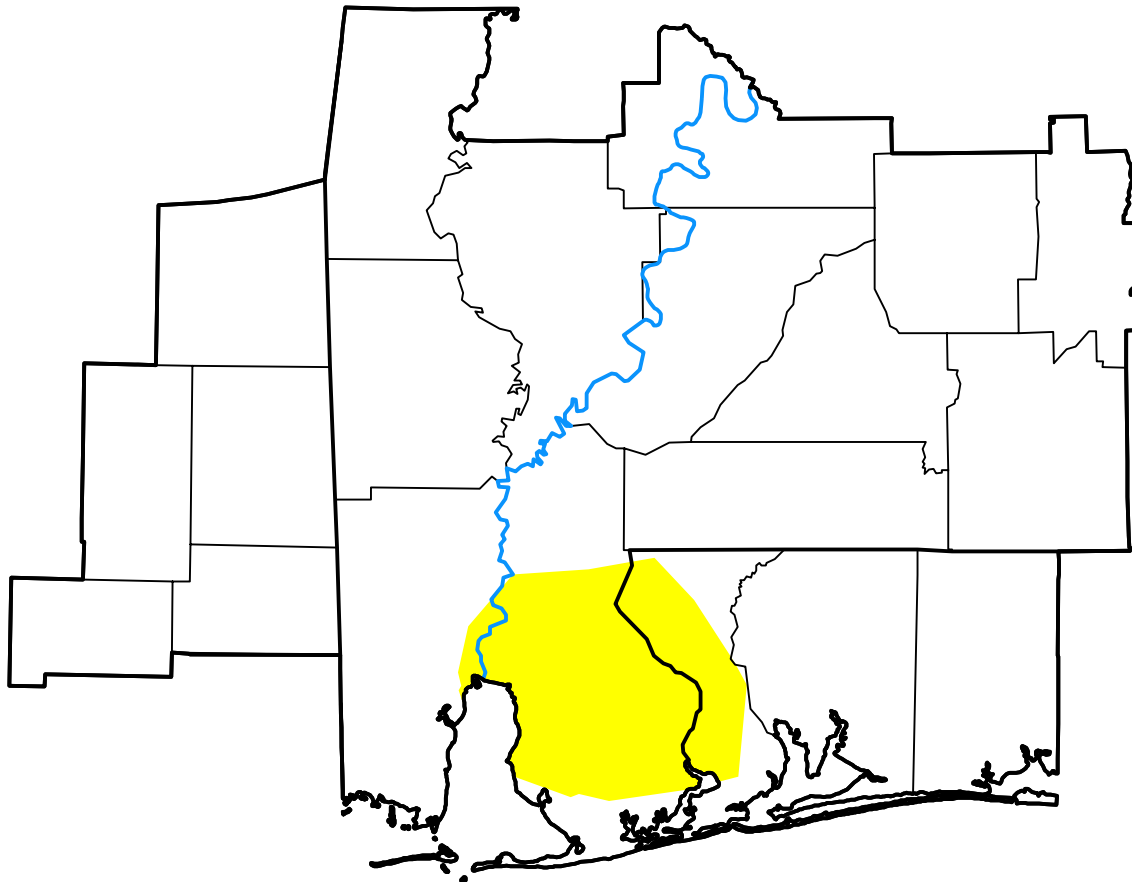
**August 21, 2018**

(Released Thursday, Aug. 23, 2018)

Valid 8 a.m. EDT

### Drought Conditions (Percent Area)

	None	D0	D1	D2	D3	D4
<b>Current</b>	92.29	7.71	0.00	0.00	0.00	0.00
<b>Last Week</b> <i>08-16-2018</i>	95.80	4.20	0.00	0.00	0.00	0.00
<b>3 Months Ago</b> <i>05-24-2018</i>	36.07	62.40	1.53	0.00	0.00	0.00
<b>Start of Calendar Year</b> <i>01-04-2018</i>	15.46	61.51	23.03	0.00	0.00	0.00
<b>Start of Water Year</b> <i>09-28-2017</i>	100.00	0.00	0.00	0.00	0.00	0.00
<b>One Year Ago</b> <i>08-24-2017</i>	100.00	0.00	0.00	0.00	0.00	0.00



### Intensity:

- None
- D0 Abnormally Dry
- D1 Moderate Drought
- D2 Severe Drought
- D3 Extreme Drought
- D4 Exceptional Drought

The Drought Monitor focuses on broad-scale conditions. Local conditions may vary. For more information on the Drought Monitor, go to <https://droughtmonitor.unl.edu/About.aspx>

### Author:

Jessica Blunden  
NCEI/NOAA

