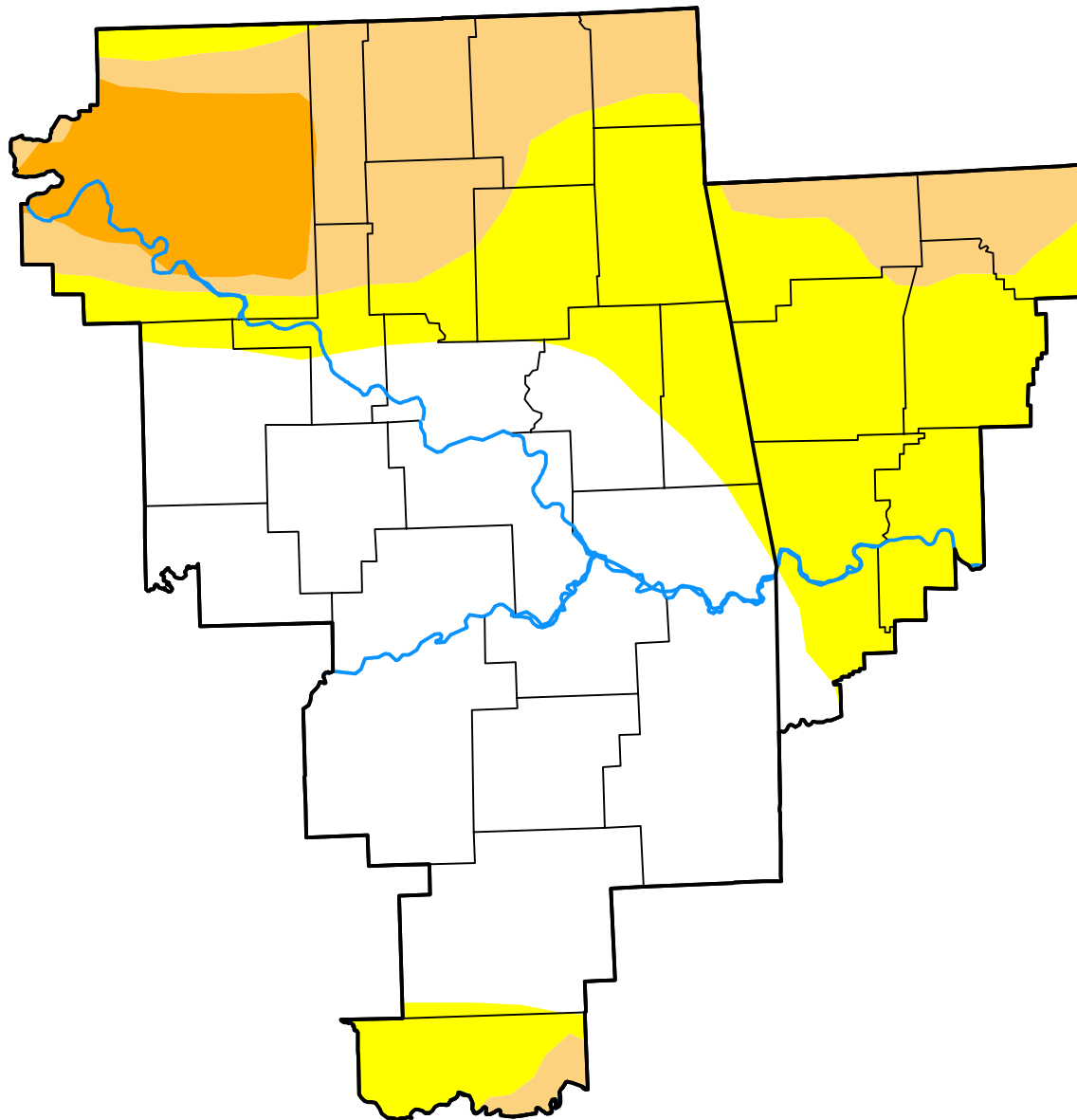


U.S. Drought Monitor Tulsa, OK WFO

August 21, 2018
(Released Thursday, Aug. 23, 2018)
Valid 8 a.m. EDT



Drought Conditions (Percent Area)

	None	D0	D1	D2	D3	D4
Current	44.64	31.50	17.34	6.53	0.00	0.00
Last Week <i>08-16-2018</i>	24.70	18.19	33.86	22.14	1.12	0.00
3 Months Ago <i>05-24-2018</i>	82.84	9.00	6.17	1.99	0.00	0.00
Start of Calendar Year <i>01-04-2018</i>	0.00	31.87	31.19	36.93	0.00	0.00
Start of Water Year <i>09-28-2017</i>	34.66	65.34	0.00	0.00	0.00	0.00
One Year Ago <i>08-24-2017</i>	100.00	0.00	0.00	0.00	0.00	0.00

Intensity:

- None
- D0 Abnormally Dry
- D1 Moderate Drought
- D2 Severe Drought
- D3 Extreme Drought
- D4 Exceptional Drought

The Drought Monitor focuses on broad-scale conditions. Local conditions may vary. For more information on the Drought Monitor, go to <https://droughtmonitor.unl.edu/About.aspx>

Author:

Jessica Blunden
NCEI/NOAA

