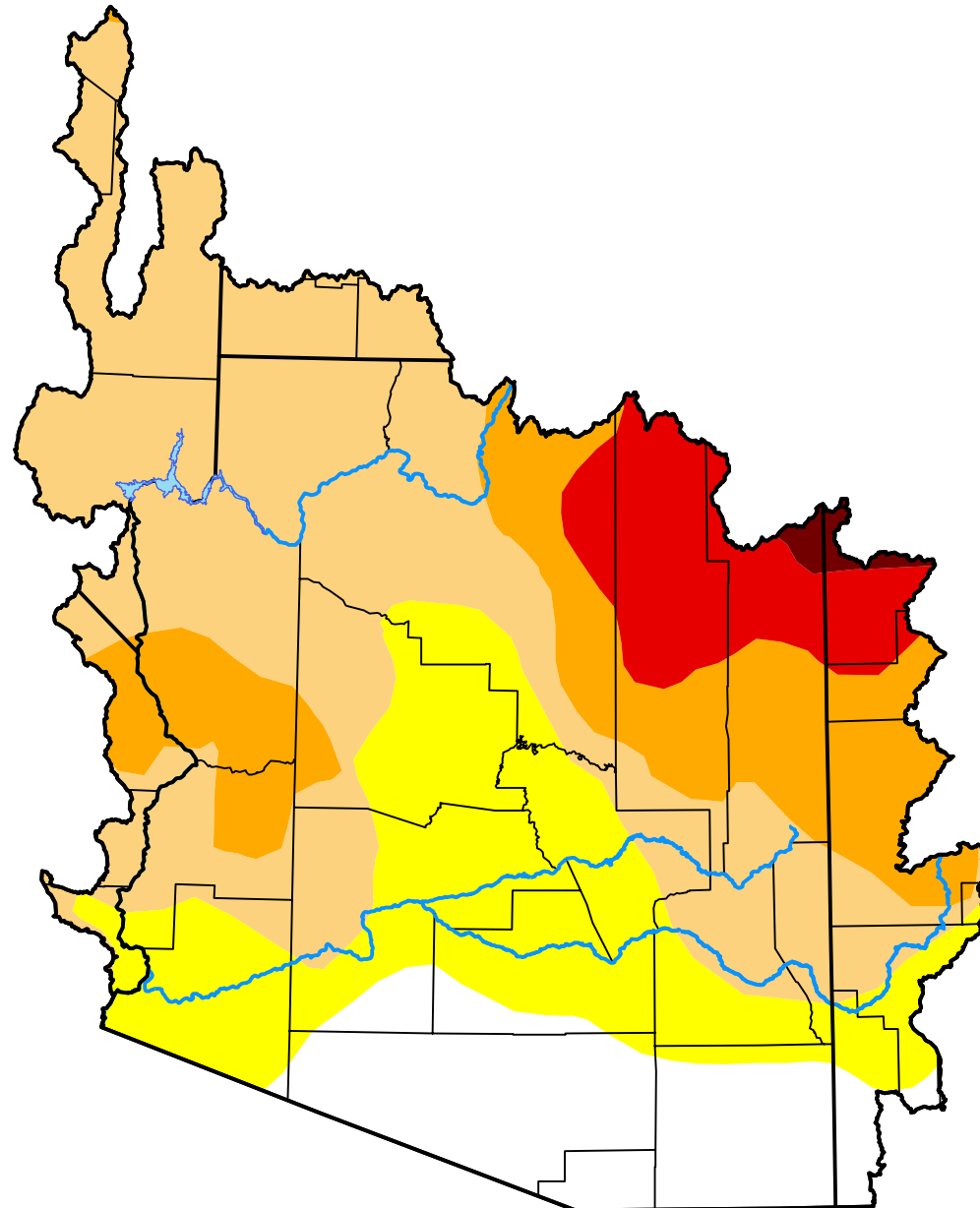


U.S. Drought Monitor

Lower Colorado Watershed

January 15, 2019
 (Released Thursday, Jan. 17, 2019)
 Valid 7 a.m. EST



Drought Conditions (Percent Area)

	None	D0-D4	D1-D4	D2-D4	D3-D4	D4
Current	13.90	86.10	63.77	23.99	8.39	0.58
Last Week <i>01-10-2019</i>	13.89	86.11	65.01	23.99	8.39	0.58
3 Months Ago <i>10-18-2018</i>	0.00	100.00	91.68	39.30	11.57	0.95
Start of Calendar Year <i>01-03-2019</i>	6.07	93.93	70.82	29.00	8.39	0.58
Start of Water Year <i>09-27-2018</i>	0.00	100.00	99.98	73.65	34.22	4.28
One Year Ago <i>01-18-2018</i>	0.00	100.00	93.30	24.90	0.00	0.00

Intensity:

- None
- D0 Abnormally Dry
- D1 Moderate Drought
- D2 Severe Drought
- D3 Extreme Drought
- D4 Exceptional Drought

The Drought Monitor focuses on broad-scale conditions. Local conditions may vary. For more information on the Drought Monitor, go to <https://droughtmonitor.unl.edu/About.aspx>

Author:

Brad Pugh
 CPC/NOAA

