

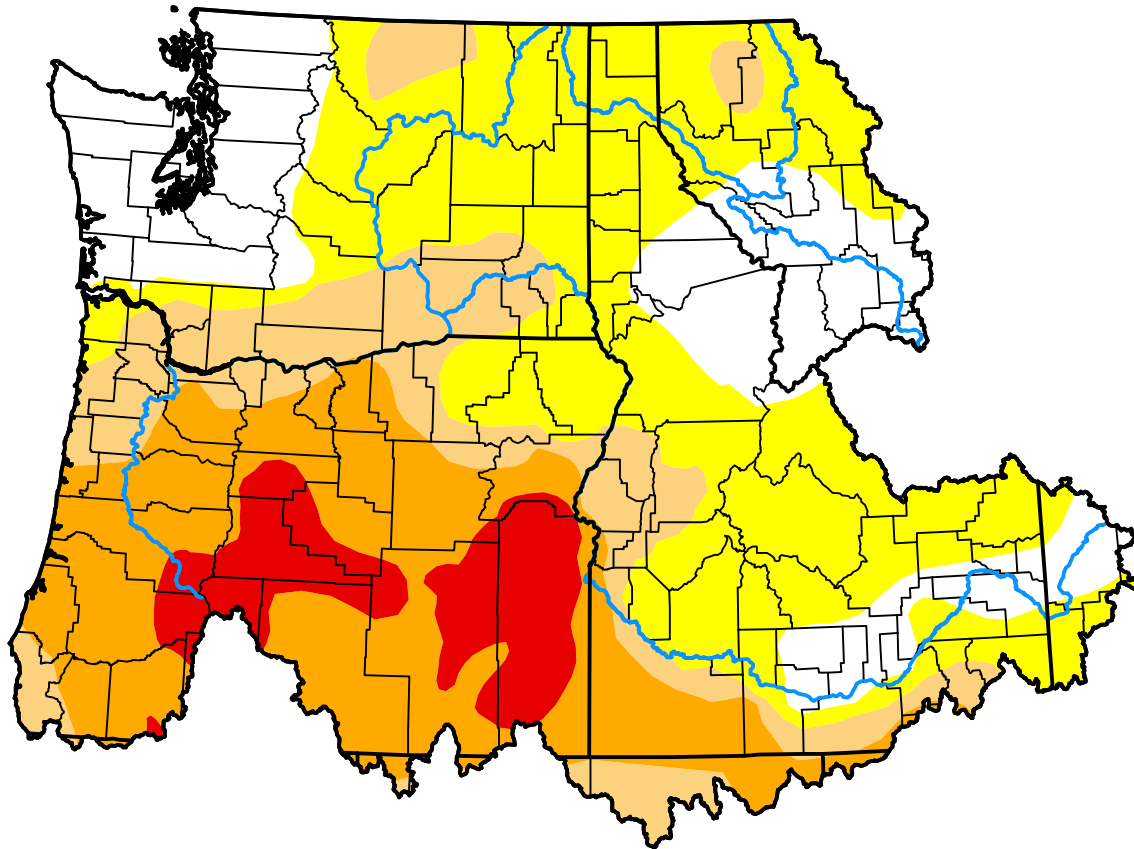
U.S. Drought Monitor

Pacific Northwest Watershed

January 15, 2019
 (Released Thursday, Jan. 17, 2019)
 Valid 7 a.m. EST

Drought Conditions (Percent Area)

	None	D0	D1	D2	D3	D4
Current	19.69	35.62	15.80	21.27	7.62	0.00
Last Week <i>01-10-2019</i>	26.39	28.91	15.80	21.27	7.62	0.00
3 Months Ago <i>10-18-2018</i>	13.29	30.54	21.60	23.16	11.42	0.00
Start of Calendar Year <i>01-03-2019</i>	24.79	30.52	15.80	21.27	7.62	0.00
Start of Water Year <i>09-27-2018</i>	0.45	41.12	21.29	26.45	10.70	0.00
One Year Ago <i>01-18-2018</i>	74.98	20.79	4.23	0.00	0.00	0.00



Intensity:



The Drought Monitor focuses on broad-scale conditions. Local conditions may vary. For more information on the Drought Monitor, go to <https://droughtmonitor.unl.edu/About.aspx>

Author:

Brad Pugh
 CPC/NOAA



droughtmonitor.unl.edu