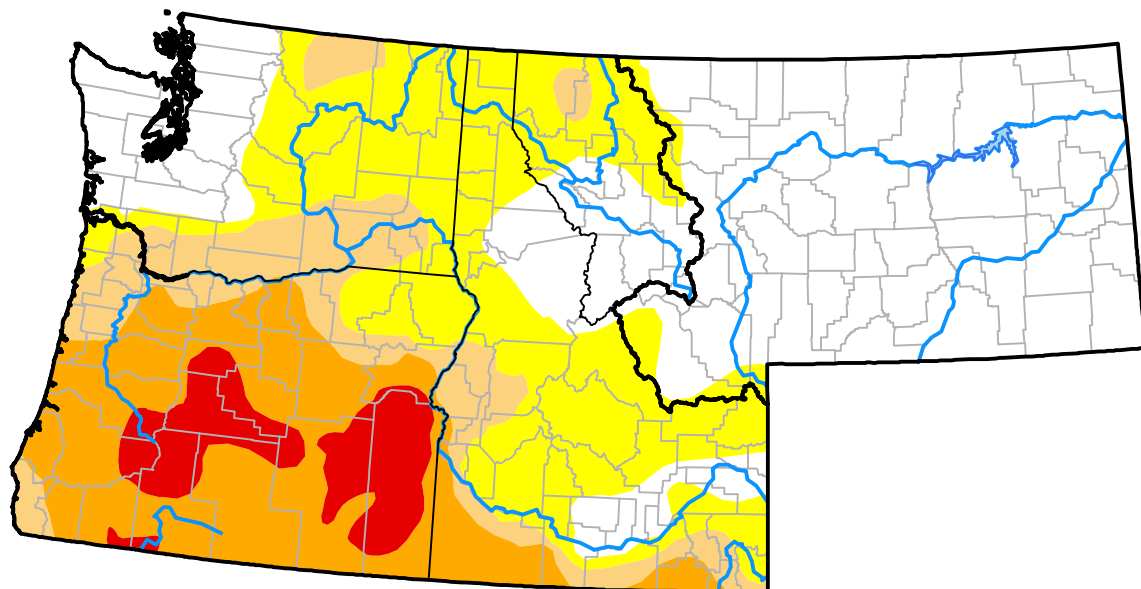


# Northwest RDEWS and Surrounding Areas

Drought Conditions (Percent Area)

	None	D0	D1	D2	D3	D4
<b>Current</b>	42.62	25.55	10.44	15.66	5.74	0.00
<b>Last Week</b> <i>01-10-2019</i>	47.77	20.43	10.41	15.66	5.74	0.00
<b>3 Months Ago</b> <i>10-18-2018</i>	33.69	24.99	16.00	17.07	8.26	0.00
<b>Start of Calendar Year</b> <i>01-03-2019</i>	46.65	21.54	10.41	15.66	5.74	0.00
<b>Start of Water Year</b> <i>09-27-2018</i>	17.34	37.87	17.68	19.36	7.76	0.00
<b>One Year Ago</b> <i>01-18-2018</i>	65.40	21.17	8.04	5.39	0.00	0.00



Intensity:



The Drought Monitor focuses on broad-scale conditions. Local conditions may vary. For more information on the Drought Monitor, go to <https://droughtmonitor.unl.edu/About.aspx>

Author:

Brad Pugh  
CPC/NOAA

