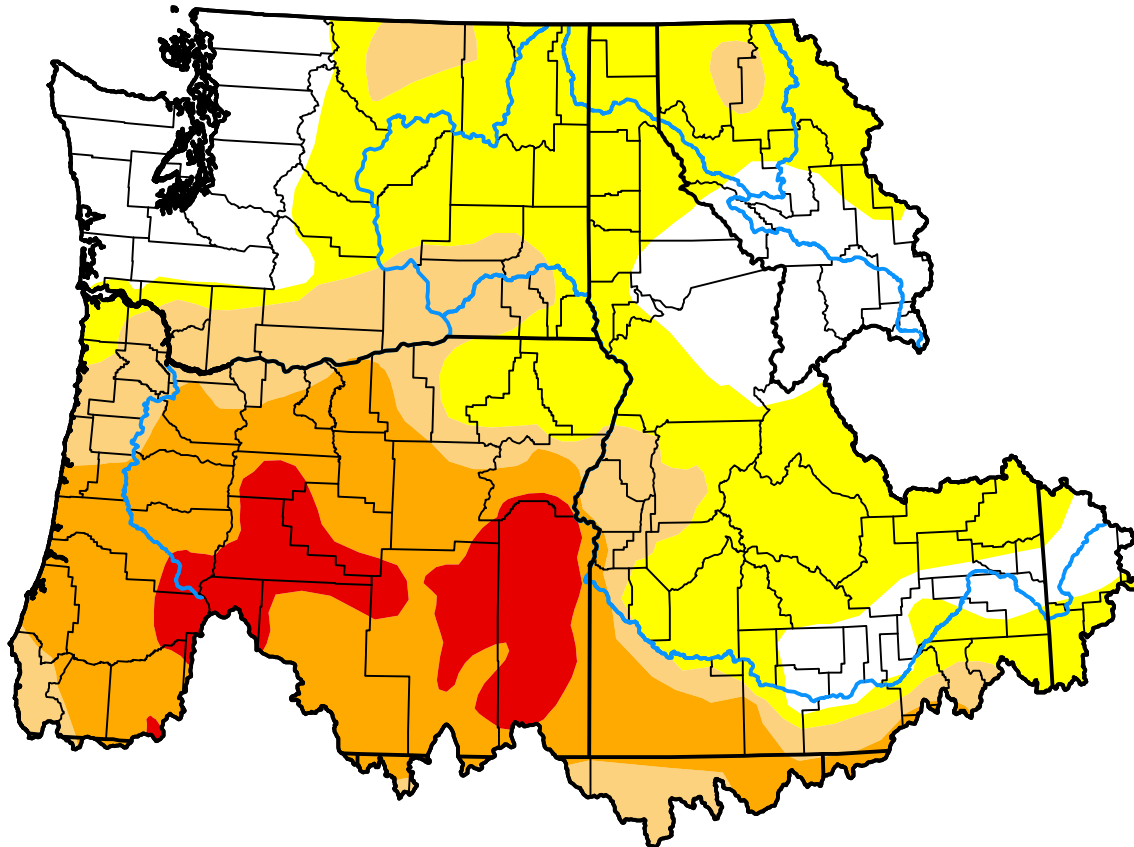


# U.S. Drought Monitor Northwest RFC

**January 15, 2019**  
(Released Thursday, Jan. 17, 2019)  
Valid 7 a.m. EST



*Drought Conditions (Percent Area)*

|  | None  | D0    | D1    | D2    | D3    | D4   |
|--|-------|-------|-------|-------|-------|------|
| <b>Current</b>                                     | 19.71 | 35.61 | 15.79 | 21.28 | 7.61  | 0.00 |
| <b>Last Week</b><br><i>01-10-2019</i>              | 26.37 | 28.93 | 15.80 | 21.28 | 7.61  | 0.00 |
| <b>3 Months Ago</b><br><i>10-18-2018</i>           | 13.25 | 30.56 | 21.60 | 23.17 | 11.41 | 0.00 |
| <b>Start of Calendar Year</b><br><i>01-03-2019</i> | 24.77 | 30.54 | 15.80 | 21.28 | 7.61  | 0.00 |
| <b>Start of Water Year</b><br><i>09-27-2018</i>    | 0.43  | 41.12 | 21.29 | 26.46 | 10.69 | 0.00 |
| <b>One Year Ago</b><br><i>01-18-2018</i>           | 74.98 | 20.78 | 4.23  | 0.00  | 0.00  | 0.00 |

***Intensity:***



*The Drought Monitor focuses on broad-scale conditions. Local conditions may vary. For more information on the Drought Monitor, go to <https://droughtmonitor.unl.edu/About.aspx>*

***Author:***

Brad Pugh  
CPC/NOAA

