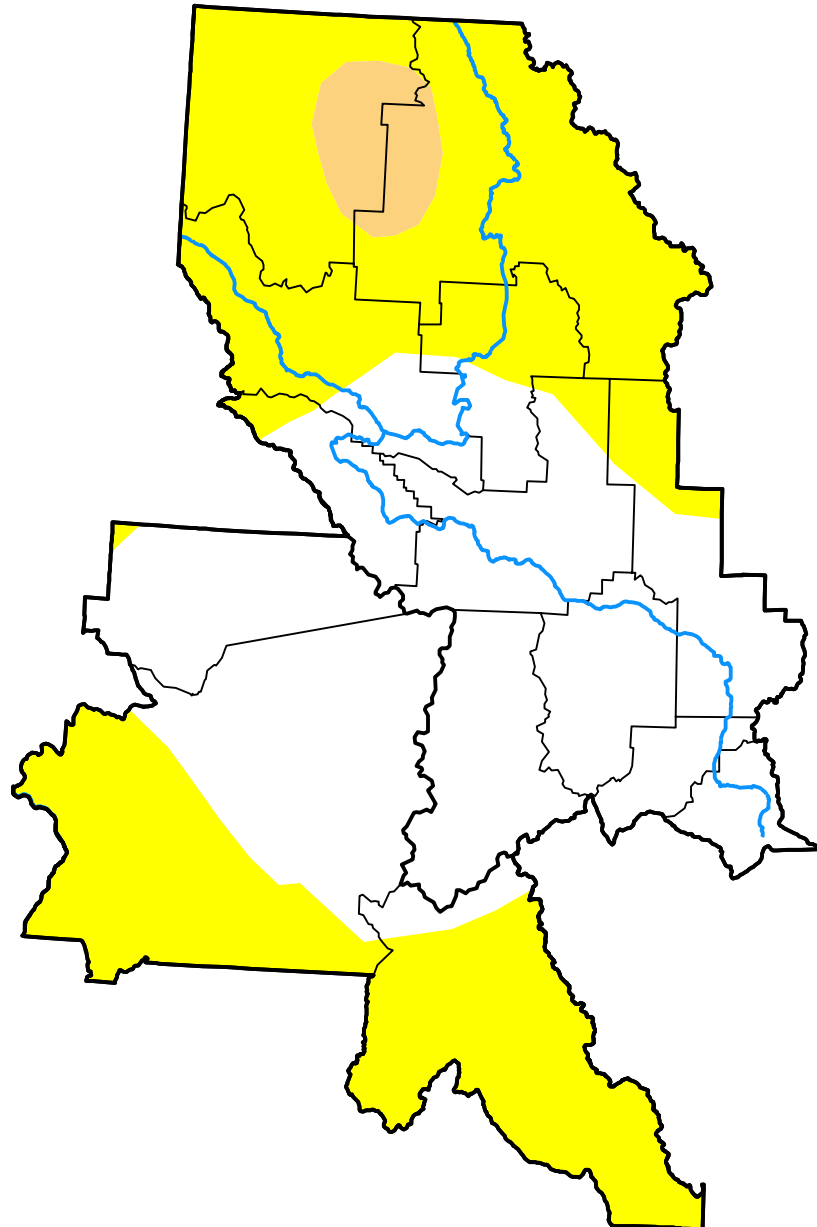


U.S. Drought Monitor

Missoula, MT WFO

January 15, 2019
 (Released Thursday, Jan. 17, 2019)
 Valid 7 a.m. EST



Drought Conditions (Percent Area)

	None	D0	D1	D2	D3	D4
Current	48.44	48.23	3.33	0.00	0.00	0.00
Last Week <i>01-10-2019</i>	66.35	30.32	3.33	0.00	0.00	0.00
3 Months Ago <i>10-18-2018</i>	52.31	28.10	16.83	2.77	0.00	0.00
Start of Calendar Year <i>01-03-2019</i>	66.35	30.32	3.33	0.00	0.00	0.00
Start of Water Year <i>09-27-2018</i>	0.09	80.32	9.69	9.90	0.00	0.00
One Year Ago <i>01-18-2018</i>	98.72	0.80	0.48	0.00	0.00	0.00

Intensity:

- None
- D0 Abnormally Dry
- D1 Moderate Drought
- D2 Severe Drought
- D3 Extreme Drought
- D4 Exceptional Drought

The Drought Monitor focuses on broad-scale conditions. Local conditions may vary. For more information on the Drought Monitor, go to <https://droughtmonitor.unl.edu/About.aspx>

Author:

Brad Pugh
 CPC/NOAA

