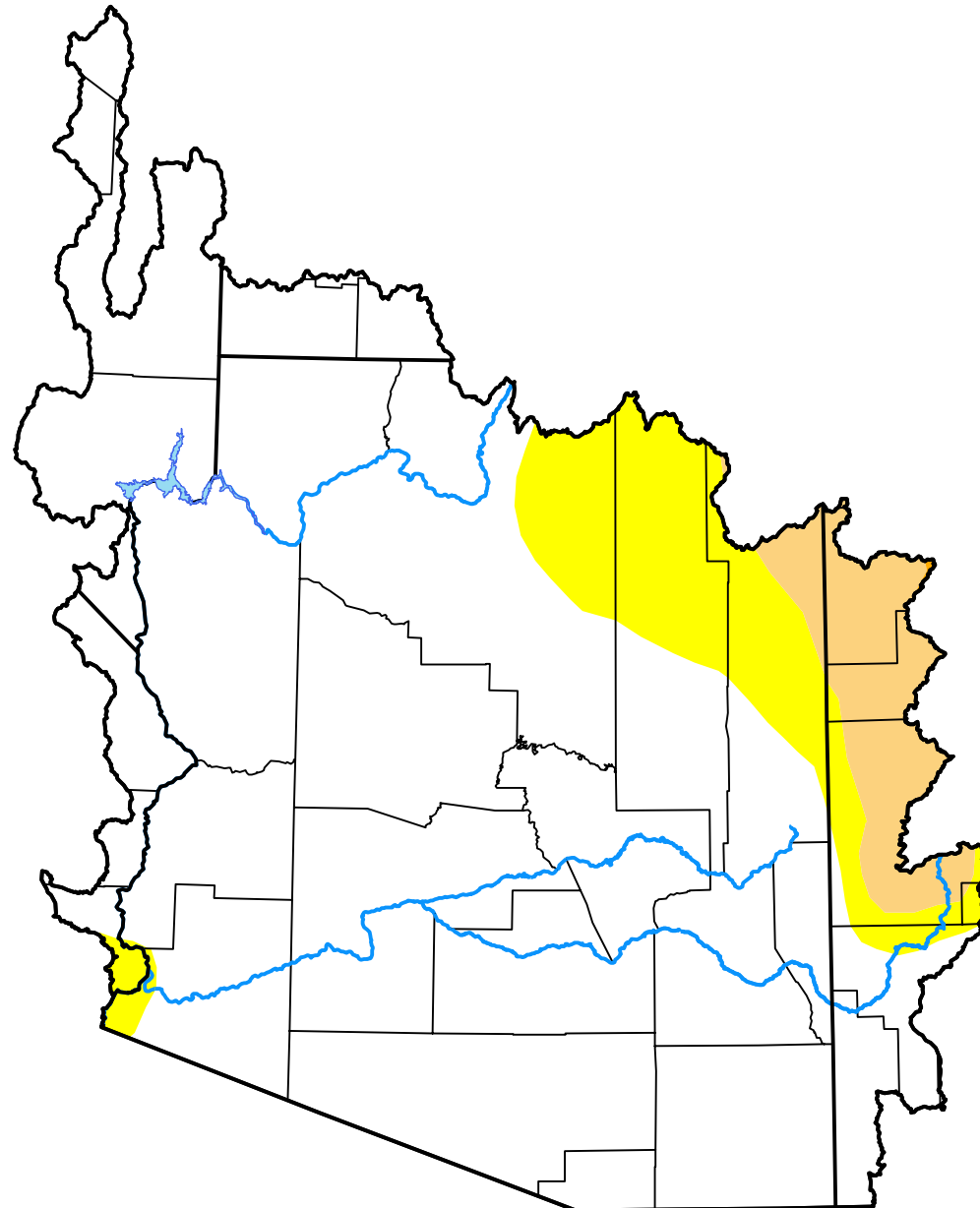


# U.S. Drought Monitor

## Lower Colorado Watershed

**April 23, 2019**  
 (Released Thursday, Apr. 25, 2019)  
 Valid 8 a.m. EDT



*Drought Conditions (Percent Area)*

	None	D0-D4	D1-D4	D2-D4	D3-D4	D4
<b>Current</b>	84.18	15.82	5.39	0.02	0.00	0.00
<b>Last Week</b> <i>04-18-2019</i>	82.39	17.61	5.39	0.64	0.00	0.00
<b>3 Months Ago</b> <i>01-24-2019</i>	15.33	84.67	37.95	15.77	0.59	0.00
<b>Start of Calendar Year</b> <i>01-03-2019</i>	6.07	93.93	70.82	29.00	8.39	0.58
<b>Start of Water Year</b> <i>09-27-2018</i>	0.00	100.00	99.98	73.65	34.22	4.28
<b>One Year Ago</b> <i>04-26-2018</i>	0.00	100.00	99.98	84.11	40.47	4.82

***Intensity:***

- None
- D0 Abnormally Dry
- D1 Moderate Drought
- D2 Severe Drought
- D3 Extreme Drought
- D4 Exceptional Drought

*The Drought Monitor focuses on broad-scale conditions. Local conditions may vary. For more information on the Drought Monitor, go to <https://droughtmonitor.unl.edu/About.aspx>*

***Author:***

David Miskus  
 NOAA/NWS/NCEP/CPC

