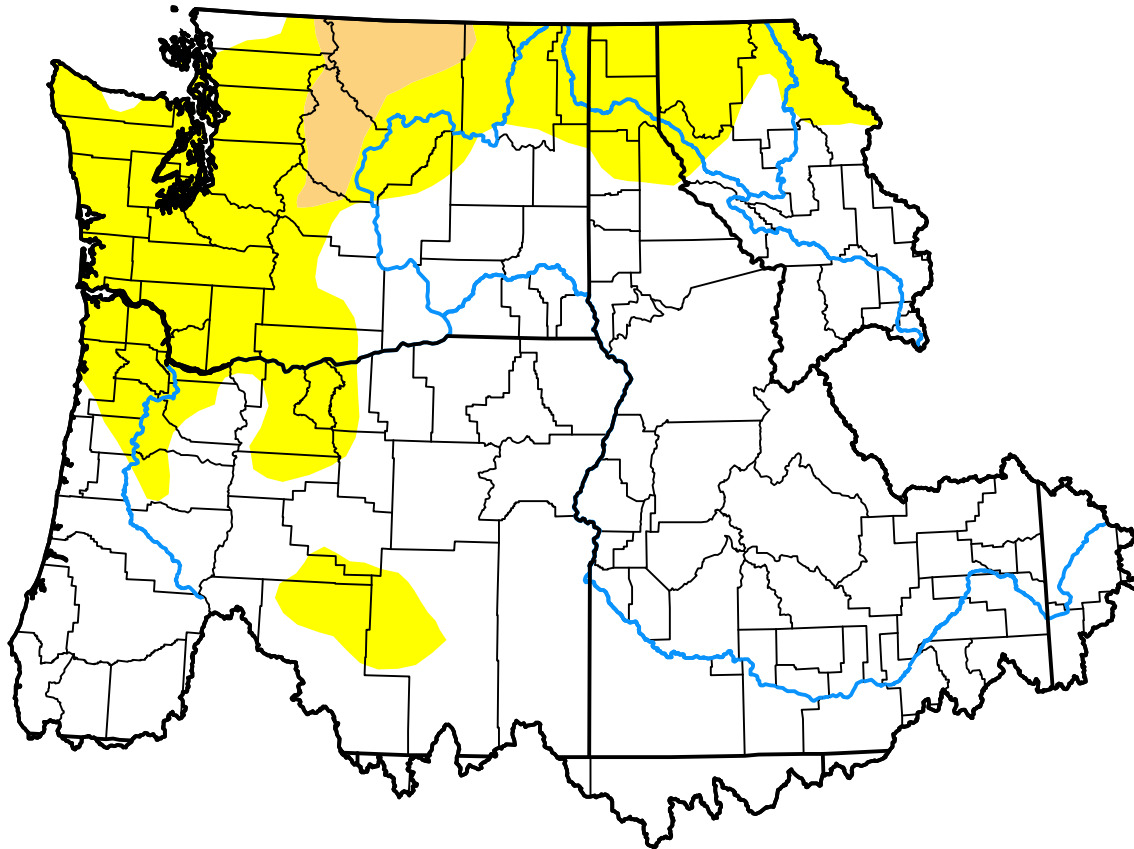


U.S. Drought Monitor

Pacific Northwest Watershed

April 23, 2019
 (Released Thursday, Apr. 25, 2019)
 Valid 8 a.m. EDT



Drought Conditions (Percent Area)

	None	D0	D1	D2	D3	D4
Current	72.28	25.16	2.56	0.00	0.00	0.00
Last Week <i>04-18-2019</i>	69.57	27.63	2.79	0.00	0.00	0.00
3 Months Ago <i>01-24-2019</i>	21.41	37.28	12.41	25.25	3.64	0.00
Start of Calendar Year <i>01-03-2019</i>	24.79	30.52	15.80	21.27	7.62	0.00
Start of Water Year <i>09-27-2018</i>	0.45	41.12	21.29	26.45	10.70	0.00
One Year Ago <i>04-26-2018</i>	65.48	21.53	12.99	0.00	0.00	0.00

Intensity:

- None
- D0 Abnormally Dry
- D1 Moderate Drought
- D2 Severe Drought
- D3 Extreme Drought
- D4 Exceptional Drought

The Drought Monitor focuses on broad-scale conditions. Local conditions may vary. For more information on the Drought Monitor, go to <https://droughtmonitor.unl.edu/About.aspx>

Author:

David Miskus
 NOAA/NWS/NCEP/CPC

