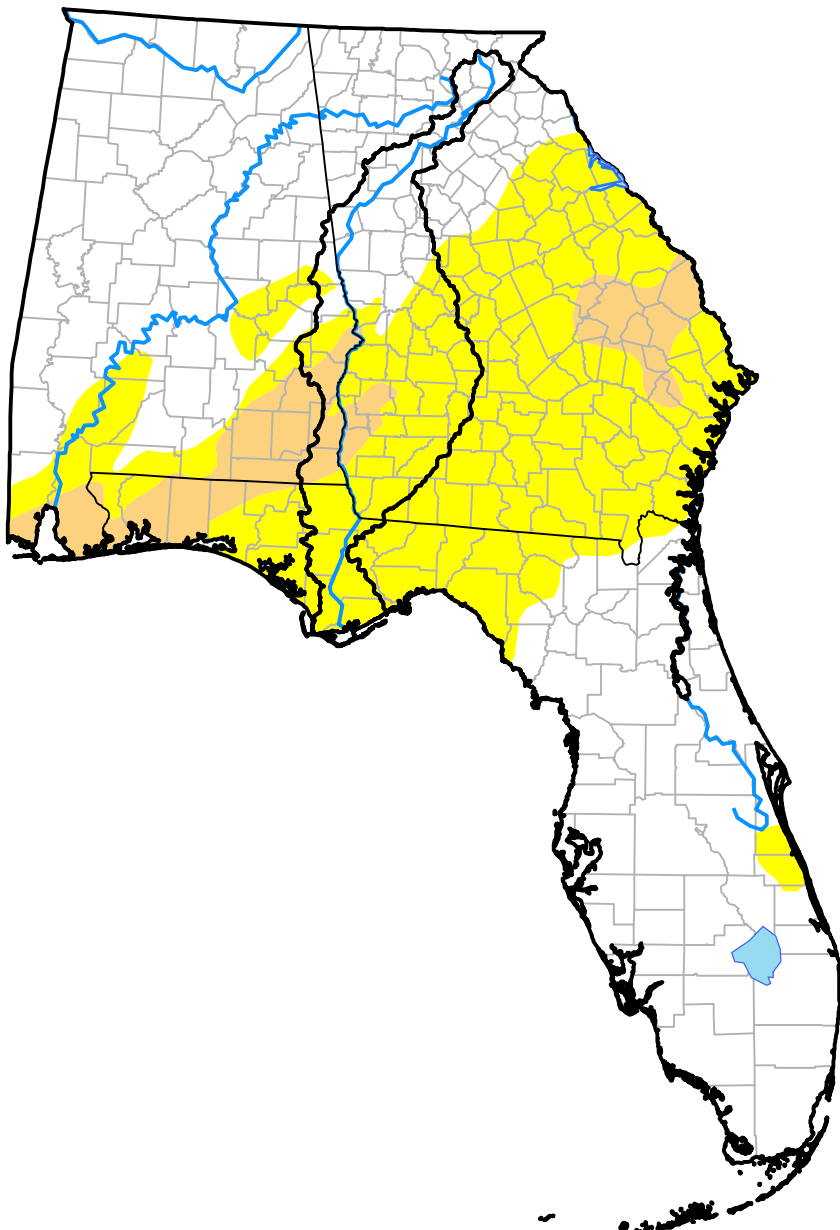


# U.S. Drought Monitor

## ACF River Basin RDEWS

**April 23, 2019**  
 (Released Thursday, Apr. 25, 2019)  
 Valid 8 a.m. EDT



*Drought Conditions (Percent Area)*

	None	D0	D1	D2	D3	D4
<b>Current</b>	32.17	56.73	11.09	0.00	0.00	0.00
<b>Last Week</b> <i>04-18-2019</i>	17.42	58.24	24.33	0.00	0.00	0.00
<b>3 Months Ago</b> <i>01-24-2019</i>	100.00	0.00	0.00	0.00	0.00	0.00
<b>Start of Calendar Year</b> <i>01-03-2019</i>	100.00	0.00	0.00	0.00	0.00	0.00
<b>Start of Water Year</b> <i>09-27-2018</i>	91.09	8.91	0.00	0.00	0.00	0.00
<b>One Year Ago</b> <i>04-26-2018</i>	61.41	28.75	9.84	0.00	0.00	0.00

*Intensity:*

- None
- D0 Abnormally Dry
- D1 Moderate Drought
- D2 Severe Drought
- D3 Extreme Drought
- D4 Exceptional Drought

*The Drought Monitor focuses on broad-scale conditions. Local conditions may vary. For more information on the Drought Monitor, go to <https://droughtmonitor.unl.edu/About.aspx>*

*Author:*

David Miskus  
 NOAA/NWS/NCEP/CPC

