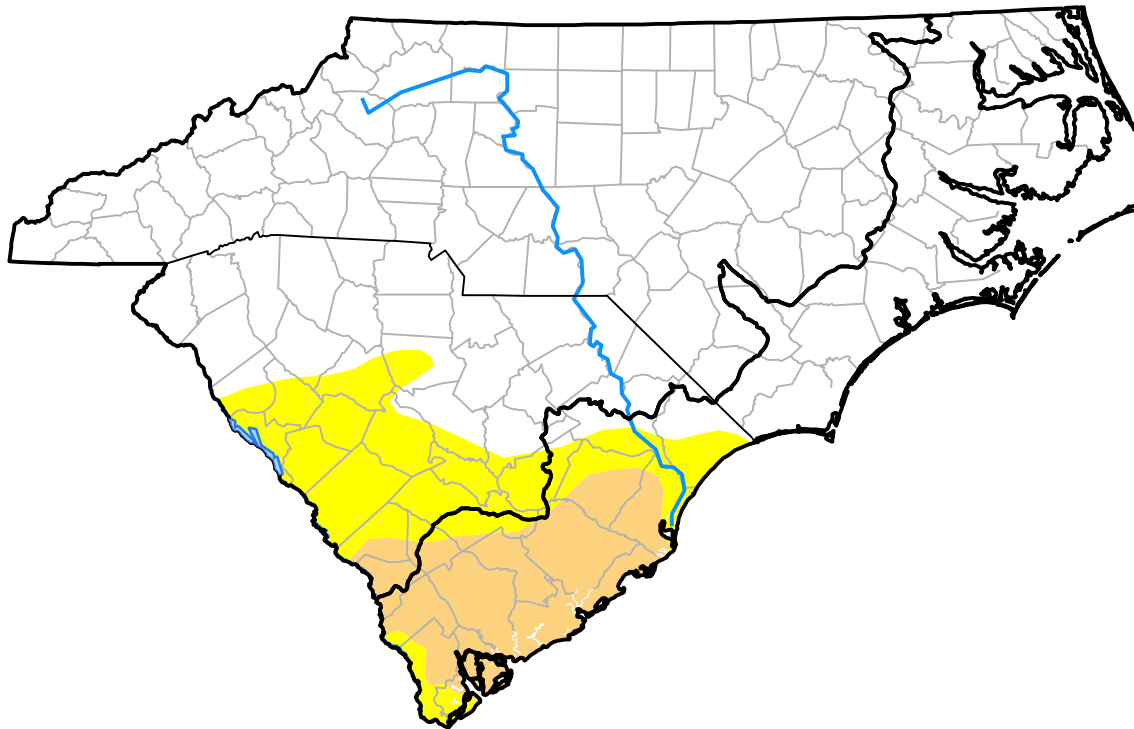


# Carolinas RDEWS and Surrounding Areas

(Released Thursday, Apr. 25, 2019)

10:00 a.m. EDT



Drought Conditions (Percent Area)

	None	D0	D1	D2	D3	D4
<b>Current</b>	79.22	11.86	8.92	0.00	0.00	0.00
<b>Last Week</b> <i>04-18-2019</i>	76.70	13.18	10.11	0.00	0.00	0.00
<b>3 Months Ago</b> <i>01-24-2019</i>	100.00	0.00	0.00	0.00	0.00	0.00
<b>Start of Calendar Year</b> <i>01-03-2019</i>	100.00	0.00	0.00	0.00	0.00	0.00
<b>Start of Water Year</b> <i>09-27-2018</i>	96.11	3.30	0.59	0.00	0.00	0.00
<b>One Year Ago</b> <i>04-26-2018</i>	68.67	18.46	10.97	1.90	0.00	0.00

Intensity:

- None
- D0 Abnormally Dry
- D1 Moderate Drought
- D2 Severe Drought
- D3 Extreme Drought
- D4 Exceptional Drought

The Drought Monitor focuses on broad-scale conditions. Local conditions may vary. For more information on the Drought Monitor, go to <https://droughtmonitor.unl.edu/About.aspx>

Author:

David Miskus  
NOAA/NWS/NCEP/CPC

