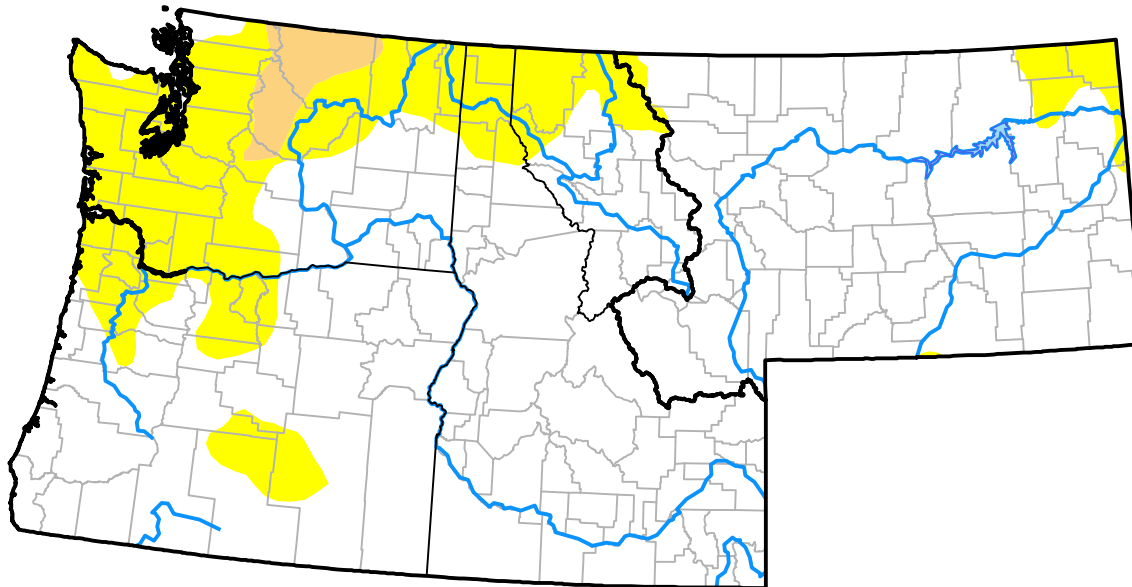


Northwest RDEWS and Surrounding Areas

Drought Conditions (Percent Area)

	None	D0	D1	D2	D3	D4
Current	79.19	19.03	1.78	0.00	0.00	0.00
Last Week <i>04-18-2019</i>	78.54	19.52	1.94	0.00	0.00	0.00
3 Months Ago <i>01-24-2019</i>	43.81	26.71	8.09	18.42	2.98	0.00
Start of Calendar Year <i>01-03-2019</i>	46.65	21.54	10.41	15.66	5.74	0.00
Start of Water Year <i>09-27-2018</i>	17.34	37.87	17.68	19.36	7.76	0.00
One Year Ago <i>04-26-2018</i>	71.56	17.23	10.80	0.42	0.00	0.00



Intensity:

- None
- D0 Abnormally Dry
- D1 Moderate Drought
- D2 Severe Drought
- D3 Extreme Drought
- D4 Exceptional Drought

The Drought Monitor focuses on broad-scale conditions. Local conditions may vary. For more information on the Drought Monitor, go to <https://droughtmonitor.unl.edu/About.aspx>

Author:

David Miskus
NOAA/NWS/NCEP/CPC

