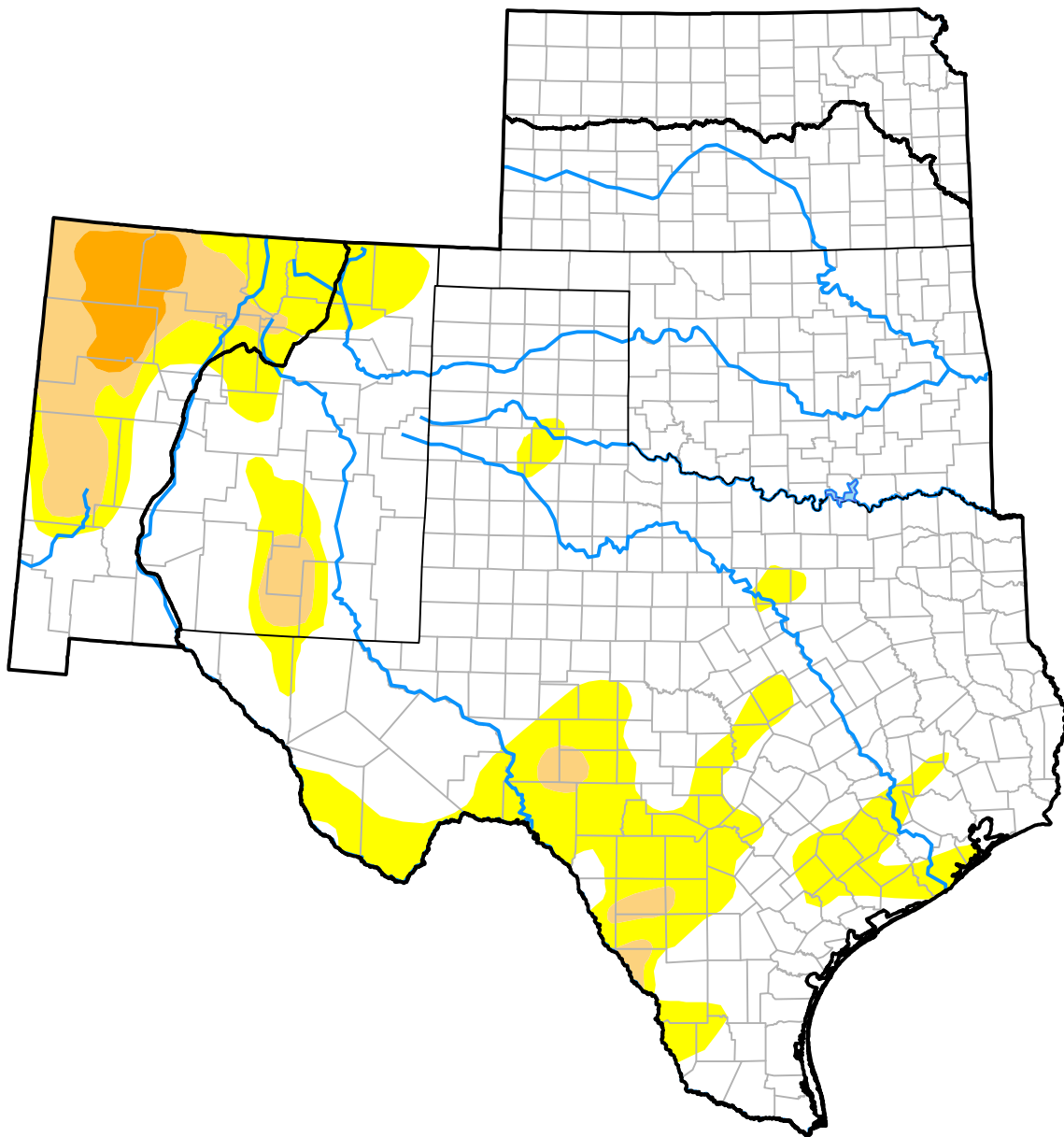


# U.S. Drought Monitor

## Southern Plains RDEWS

**April 23, 2019**  
 (Released Thursday, Apr. 25, 2019)  
 Valid 8 a.m. EDT



Drought Conditions (Percent Area)

	None	D0-D4	D1-D4	D2-D4	D3-D4	D4
<b>Current</b>	76.04	23.96	6.96	1.80	0.00	0.00
<b>Last Week</b> <i>04-18-2019</i>	71.14	28.86	13.34	4.28	0.00	0.00
<b>3 Months Ago</b> <i>01-24-2019</i>	79.87	20.13	12.82	8.73	4.00	0.38
<b>Start of Calendar Year</b> <i>01-03-2019</i>	78.63	21.37	12.67	9.33	5.24	3.77
<b>Start of Water Year</b> <i>09-27-2018</i>	44.64	55.36	37.95	20.58	9.03	4.14
<b>One Year Ago</b> <i>04-26-2018</i>	25.86	74.14	64.42	43.21	26.03	7.67

**Intensity:**

- None
- D0 Abnormally Dry
- D1 Moderate Drought
- D2 Severe Drought
- D3 Extreme Drought
- D4 Exceptional Drought

The Drought Monitor focuses on broad-scale conditions. Local conditions may vary. For more information on the Drought Monitor, go to <https://droughtmonitor.unl.edu/About.aspx>

**Author:**

David Miskus  
 NOAA/NWS/NCEP/CPC

