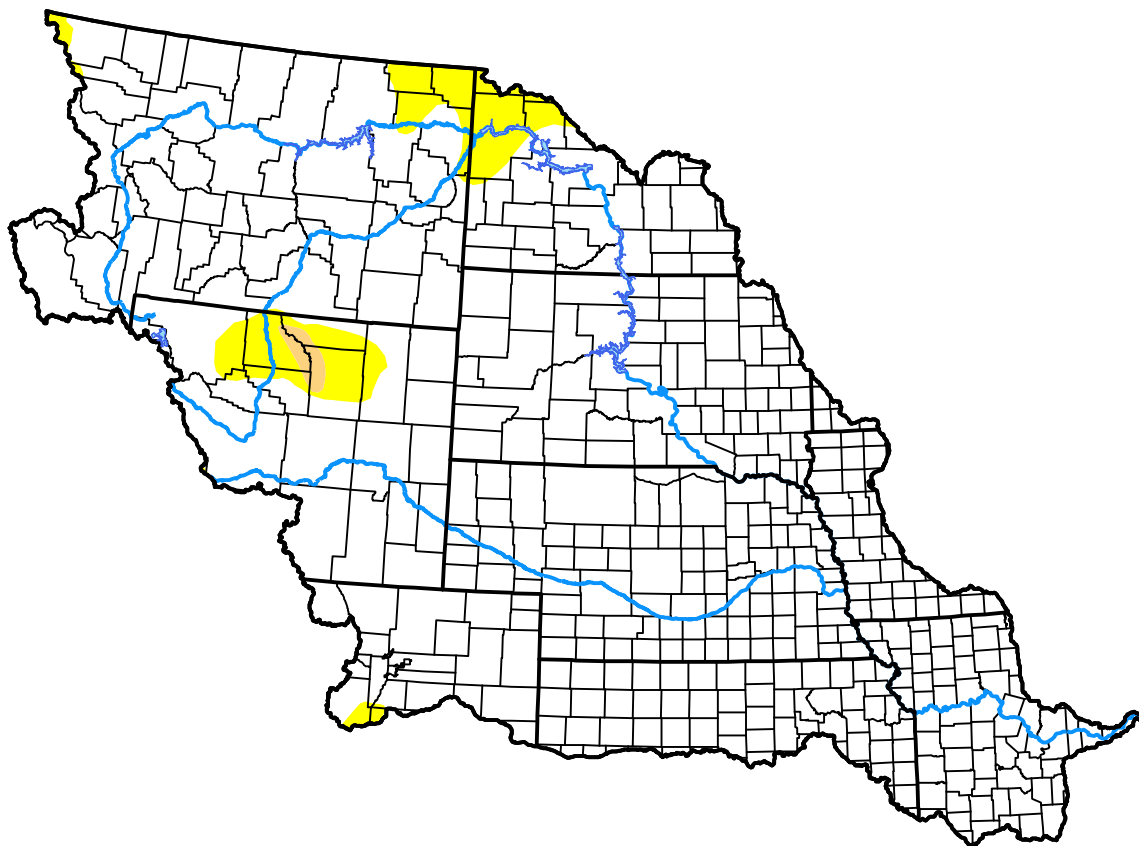


U.S. Drought Monitor

Missouri Basin RFC

April 23, 2019
(Released Thursday, Apr. 25, 2019)
 Valid 8 a.m. EDT



Drought Conditions (Percent Area)

	None	D0-D4	D1-D4	D2-D4	D3-D4	D4
Current	95.07	4.93	0.34	0.00	0.00	0.00
Last Week <i>04-18-2019</i>	97.20	2.80	0.34	0.00	0.00	0.00
3 Months Ago <i>01-24-2019</i>	88.39	11.61	1.99	0.29	0.00	0.00
Start of Calendar Year <i>01-03-2019</i>	92.06	7.94	1.47	0.35	0.00	0.00
Start of Water Year <i>09-27-2018</i>	60.68	39.32	15.18	4.21	1.16	0.07
One Year Ago <i>04-26-2018</i>	67.11	32.89	16.84	2.72	0.11	0.00

Intensity:

- None
- D0 Abnormally Dry
- D1 Moderate Drought
- D2 Severe Drought
- D3 Extreme Drought
- D4 Exceptional Drought

The Drought Monitor focuses on broad-scale conditions. Local conditions may vary. For more information on the Drought Monitor, go to <https://droughtmonitor.unl.edu/About.aspx>

Author:

David Miskus
 NOAA/NWS/NCEP/CPC

