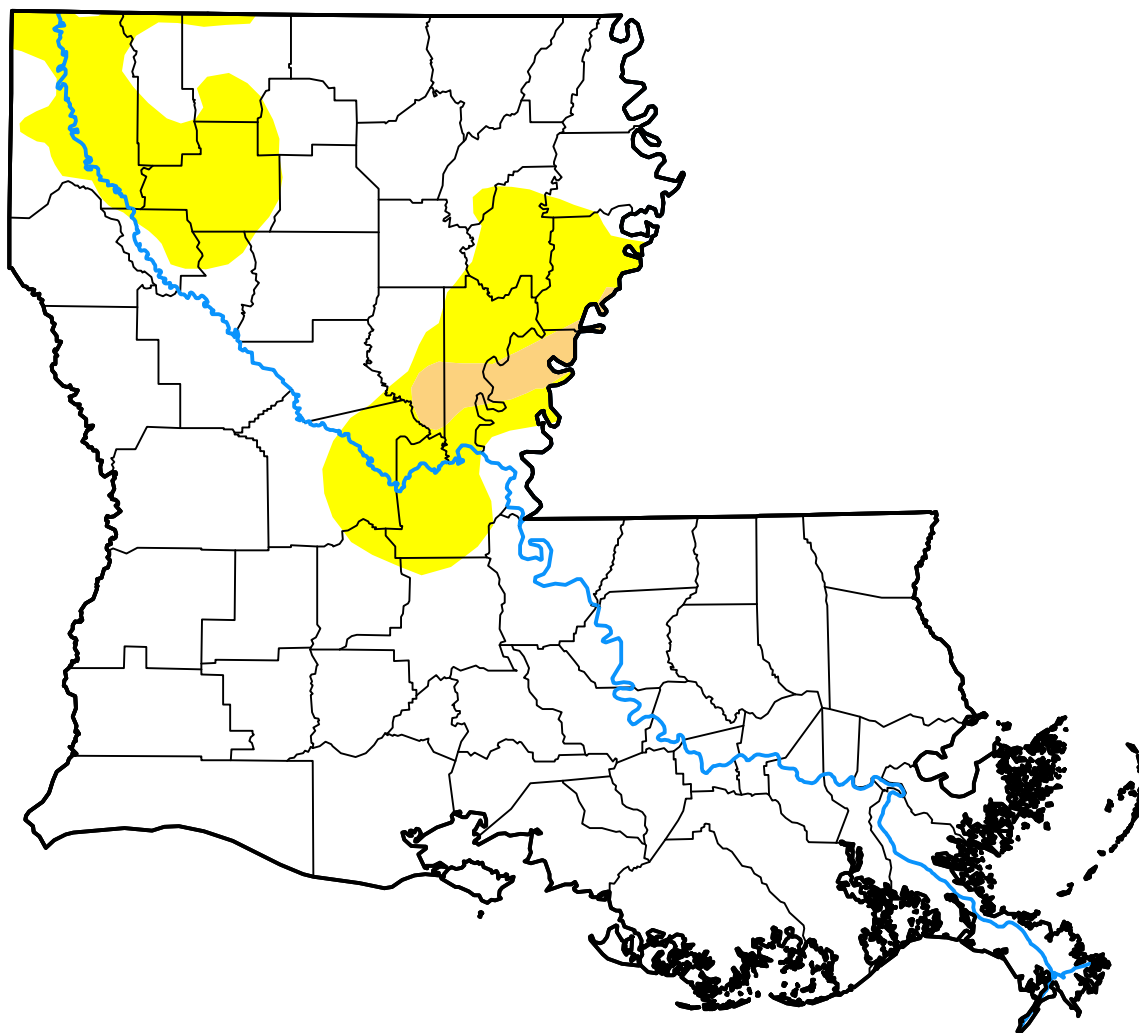


U.S. Drought Monitor

Louisiana

November 19, 2019
 (Released Thursday, Nov. 21, 2019)
 Valid 7 a.m. EST



Drought Conditions (Percent Area)

	None	D0-D4	D1-D4	D2-D4	D3-D4	D4
Current	84.37	15.63	1.29	0.00	0.00	0.00
Last Week <i>11-14-2019</i>	88.63	11.37	1.29	0.00	0.00	0.00
3 Months Ago <i>08-22-2019</i>	91.43	8.57	0.00	0.00	0.00	0.00
Start of Calendar Year <i>01-03-2019</i>	100.00	0.00	0.00	0.00	0.00	0.00
Start of Water Year <i>10-03-2019</i>	57.88	42.12	20.29	5.21	0.00	0.00
One Year Ago <i>11-21-2018</i>	100.00	0.00	0.00	0.00	0.00	0.00

Intensity:



The Drought Monitor focuses on broad-scale conditions. Local conditions may vary. For more information on the Drought Monitor, go to <https://droughtmonitor.unl.edu/About.aspx>

Author:

Brad Rippey
 U.S. Department of Agriculture



droughtmonitor.unl.edu