

# U.S. Drought Monitor

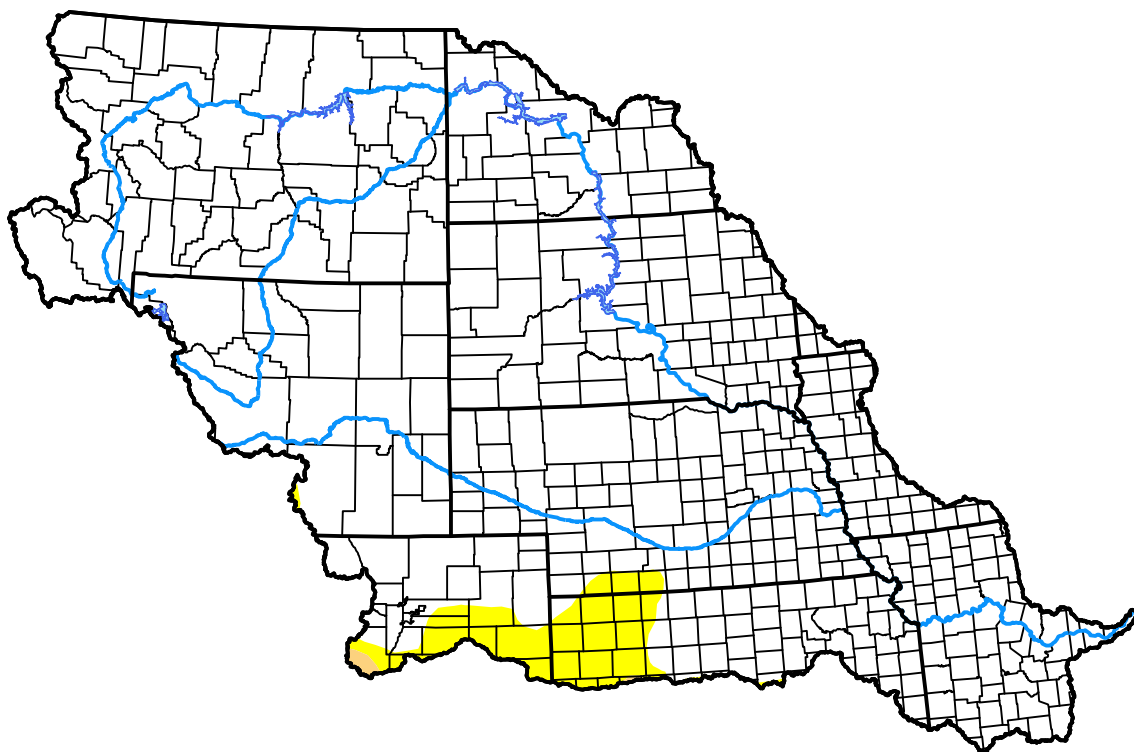
## Missouri Watershed

**November 19, 2019**  
 (Released Thursday, Nov. 21, 2019)

Valid 7 a.m. EST

### Drought Conditions (Percent Area)

	None	D0	D1	D2	D3	D4
<b>Current</b>	95.76	4.09	0.15	0.00	0.00	0.00
<b>Last Week</b> <i>11-14-2019</i>	96.27	3.58	0.15	0.00	0.00	0.00
<b>3 Months Ago</b> <i>08-22-2019</i>	96.66	3.34	0.00	0.00	0.00	0.00
<b>Start of Calendar Year</b> <i>01-03-2019</i>	92.15	6.37	1.13	0.34	0.00	0.00
<b>Start of Water Year</b> <i>10-03-2019</i>	97.75	1.79	0.46	0.00	0.00	0.00
<b>One Year Ago</b> <i>11-21-2018</i>	85.43	11.84	2.39	0.34	0.00	0.00



### Intensity:



The Drought Monitor focuses on broad-scale conditions. Local conditions may vary. For more information on the Drought Monitor, go to <https://droughtmonitor.unl.edu/About.aspx>

### Author:

Brad Rippey  
 U.S. Department of Agriculture



[droughtmonitor.unl.edu](https://droughtmonitor.unl.edu)