

U.S. Drought Monitor

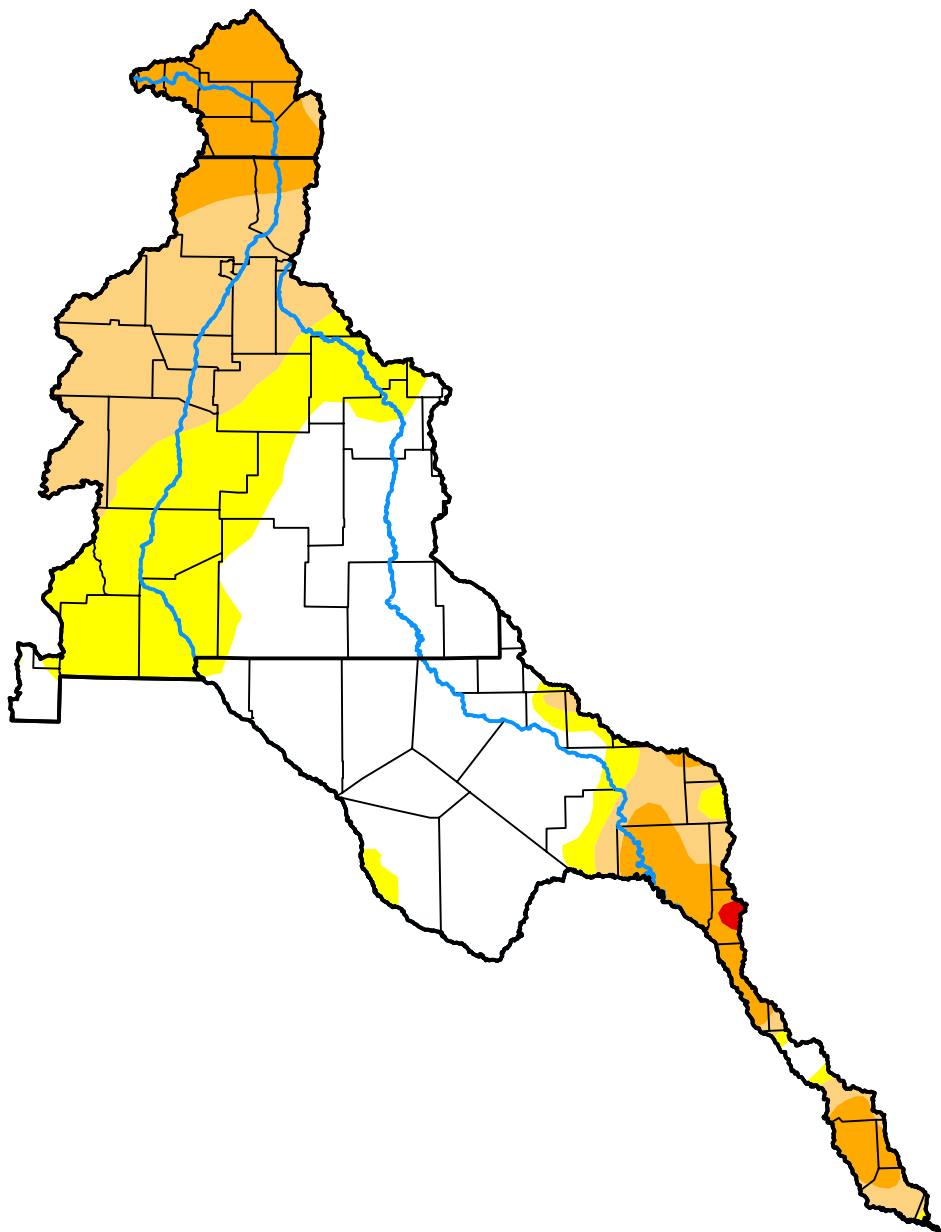
Rio Grande Watershed

November 19, 2019
 (Released Thursday, Nov. 21, 2019)

Valid 7 a.m. EST

Drought Conditions (Percent Area)

| | None | D0 | D1 | D2 | D3 | D4 |
|--|-------|-------|-------|-------|------|------|
| Current | 43.75 | 21.87 | 21.75 | 12.43 | 0.19 | 0.00 |
| Last Week <i>11-14-2019</i> | 43.02 | 22.63 | 22.85 | 11.24 | 0.27 | 0.00 |
| 3 Months Ago <i>08-22-2019</i> | 49.96 | 40.49 | 8.26 | 0.70 | 0.58 | 0.00 |
| Start of Calendar Year <i>01-03-2019</i> | 57.74 | 16.42 | 5.82 | 7.03 | 7.36 | 5.63 |
| Start of Water Year <i>10-03-2019</i> | 45.22 | 33.31 | 17.11 | 3.40 | 0.96 | 0.00 |
| One Year Ago <i>11-21-2018</i> | 52.21 | 21.58 | 5.64 | 7.39 | 7.06 | 6.13 |



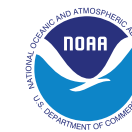
Intensity:



The Drought Monitor focuses on broad-scale conditions. Local conditions may vary. For more information on the Drought Monitor, go to <https://droughtmonitor.unl.edu/About.aspx>

Author:

Brad Rippey
 U.S. Department of Agriculture



droughtmonitor.unl.edu