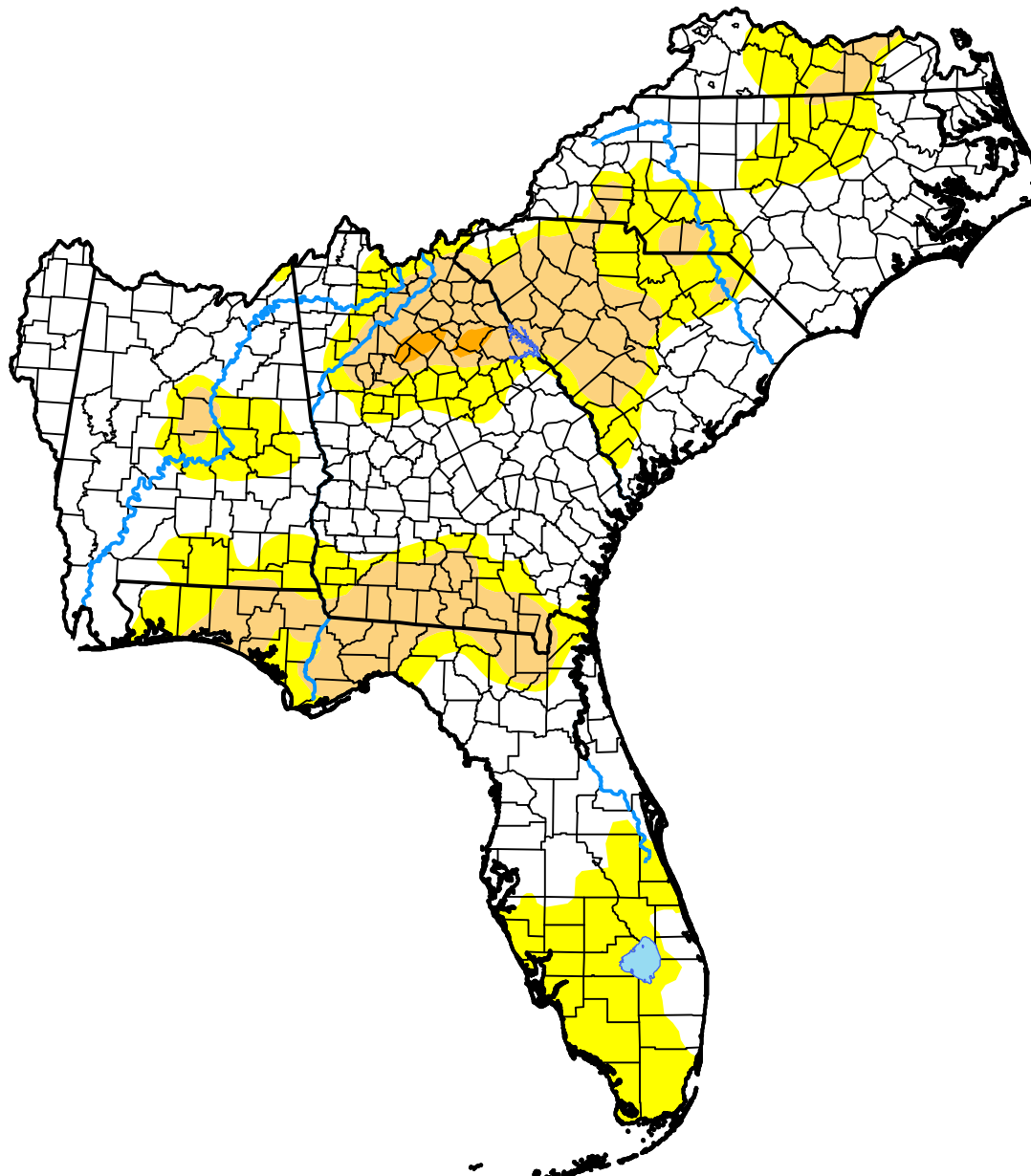


U.S. Drought Monitor Southeast RFC

November 19, 2019
(Released Thursday, Nov. 21, 2019)

Valid 7 a.m. EST



Drought Conditions (Percent Area)

	None	D0-D4	D1-D4	D2-D4	D3-D4	D4
Current	57.07	42.93	16.03	0.43	0.00	0.00
Last Week <i>11-14-2019</i>	48.66	51.34	22.16	3.69	0.00	0.00
3 Months Ago <i>08-22-2019</i>	63.90	36.10	6.77	0.48	0.00	0.00
Start of Calendar Year <i>01-03-2019</i>	92.95	7.05	5.10	0.00	0.00	0.00
Start of Water Year <i>10-03-2019</i>	23.37	76.63	41.00	12.68	2.02	0.00
One Year Ago <i>11-21-2018</i>	88.02	11.98	2.98	0.00	0.00	0.00

Intensity:



The Drought Monitor focuses on broad-scale conditions. Local conditions may vary. For more information on the Drought Monitor, go to <https://droughtmonitor.unl.edu/About.aspx>

Author:

Brad Rippey
U.S. Department of Agriculture

