

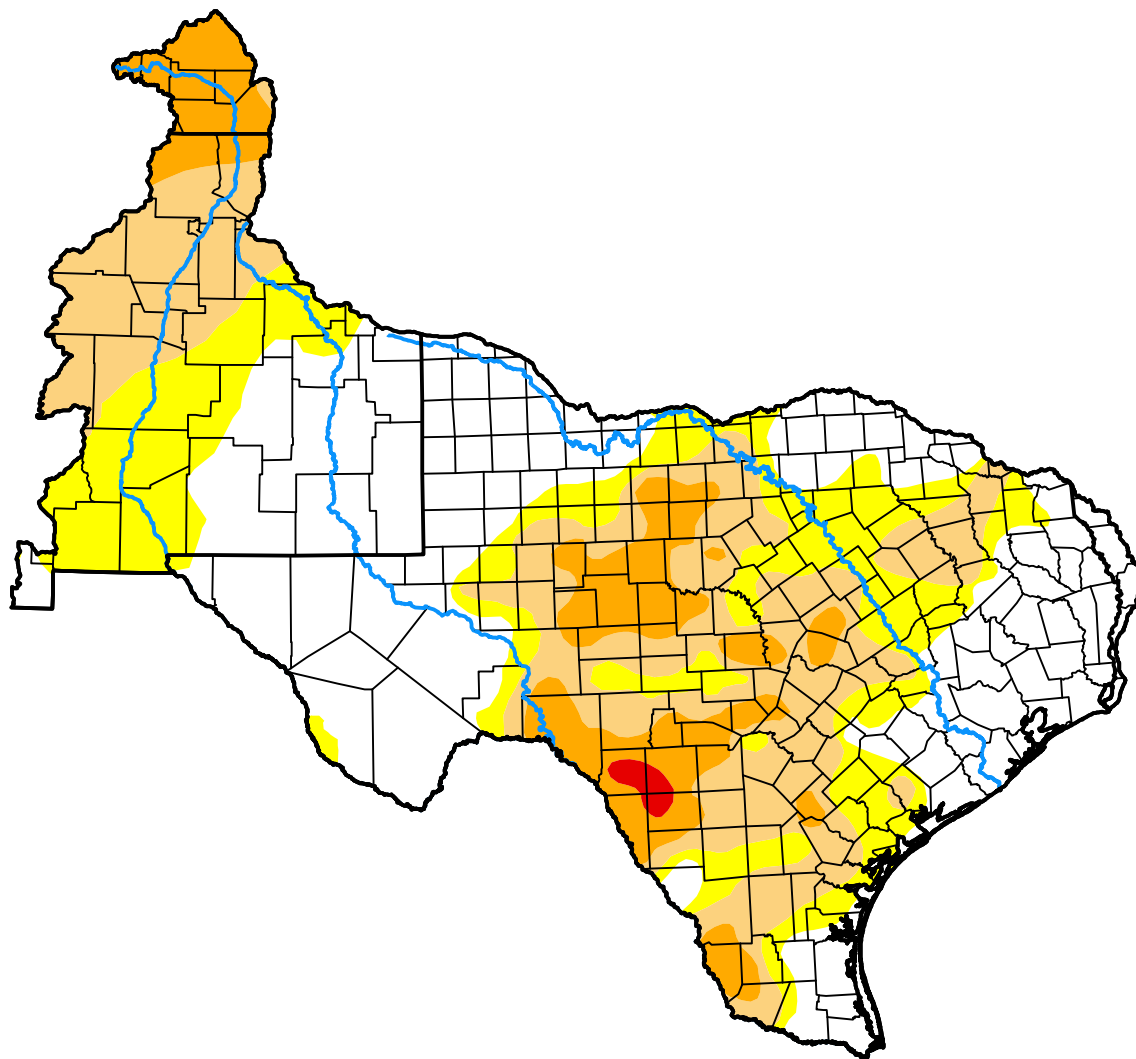
# U.S. Drought Monitor West Gulf RFC

**November 19, 2019**  
(Released Thursday, Nov. 21, 2019)

Valid 7 a.m. EST

*Drought Conditions (Percent Area)*

	None	D0-D4	D1-D4	D2-D4	D3-D4	D4
<b>Current</b>	41.51	58.49	36.76	11.93	0.45	0.00
<b>Last Week</b> <i>11-14-2019</i>	40.35	59.65	36.86	12.07	0.48	0.00
<b>3 Months Ago</b> <i>08-22-2019</i>	34.84	65.16	24.23	4.10	0.34	0.00
<b>Start of Calendar Year</b> <i>01-03-2019</i>	80.16	19.84	11.32	8.51	5.53	2.41
<b>Start of Water Year</b> <i>10-03-2019</i>	30.53	69.47	42.41	18.20	5.37	0.00
<b>One Year Ago</b> <i>11-21-2018</i>	79.42	20.58	11.14	8.75	5.62	2.62



***Intensity:***



*The Drought Monitor focuses on broad-scale conditions. Local conditions may vary. For more information on the Drought Monitor, go to <https://droughtmonitor.unl.edu/About.aspx>*

***Author:***

Brad Rippey  
U.S. Department of Agriculture



**droughtmonitor.unl.edu**