

U.S. Drought Monitor

Lower Colorado Watershed

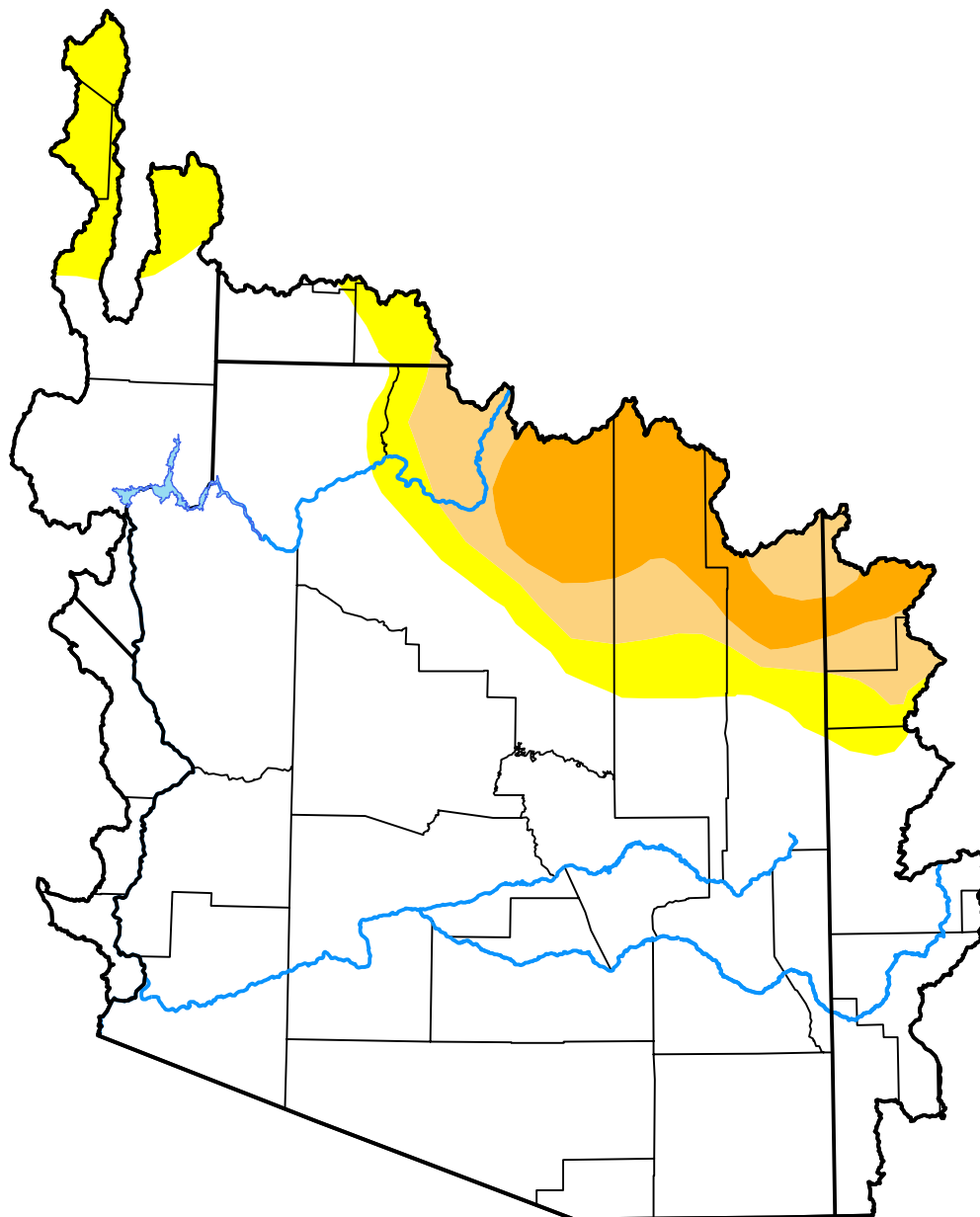
April 7, 2020

(Released Thursday, Apr. 9, 2020)

Valid 8 a.m. EDT

Drought Conditions (Percent Area)

	None	D0	D1	D2	D3	D4
Current	79.79	8.00	5.88	6.32	0.00	0.00
Last Week <i>04-02-2020</i>	79.79	8.00	5.88	6.32	0.00	0.00
3 Months Ago <i>01-09-2020</i>	72.72	9.44	8.63	9.22	0.00	0.00
Start of Calendar Year <i>01-02-2020</i>	72.72	9.44	8.15	9.69	0.00	0.00
Start of Water Year <i>10-03-2019</i>	6.82	15.56	55.57	22.04	0.00	0.00
One Year Ago <i>04-11-2019</i>	82.39	12.22	4.75	0.64	0.00	0.00



Intensity:

- None
- D0 Abnormally Dry
- D1 Moderate Drought
- D2 Severe Drought
- D3 Extreme Drought
- D4 Exceptional Drought

The Drought Monitor focuses on broad-scale conditions. Local conditions may vary. For more information on the Drought Monitor, go to <https://droughtmonitor.unl.edu/About.aspx>

Author:

David Simeral
Western Regional Climate Center



droughtmonitor.unl.edu