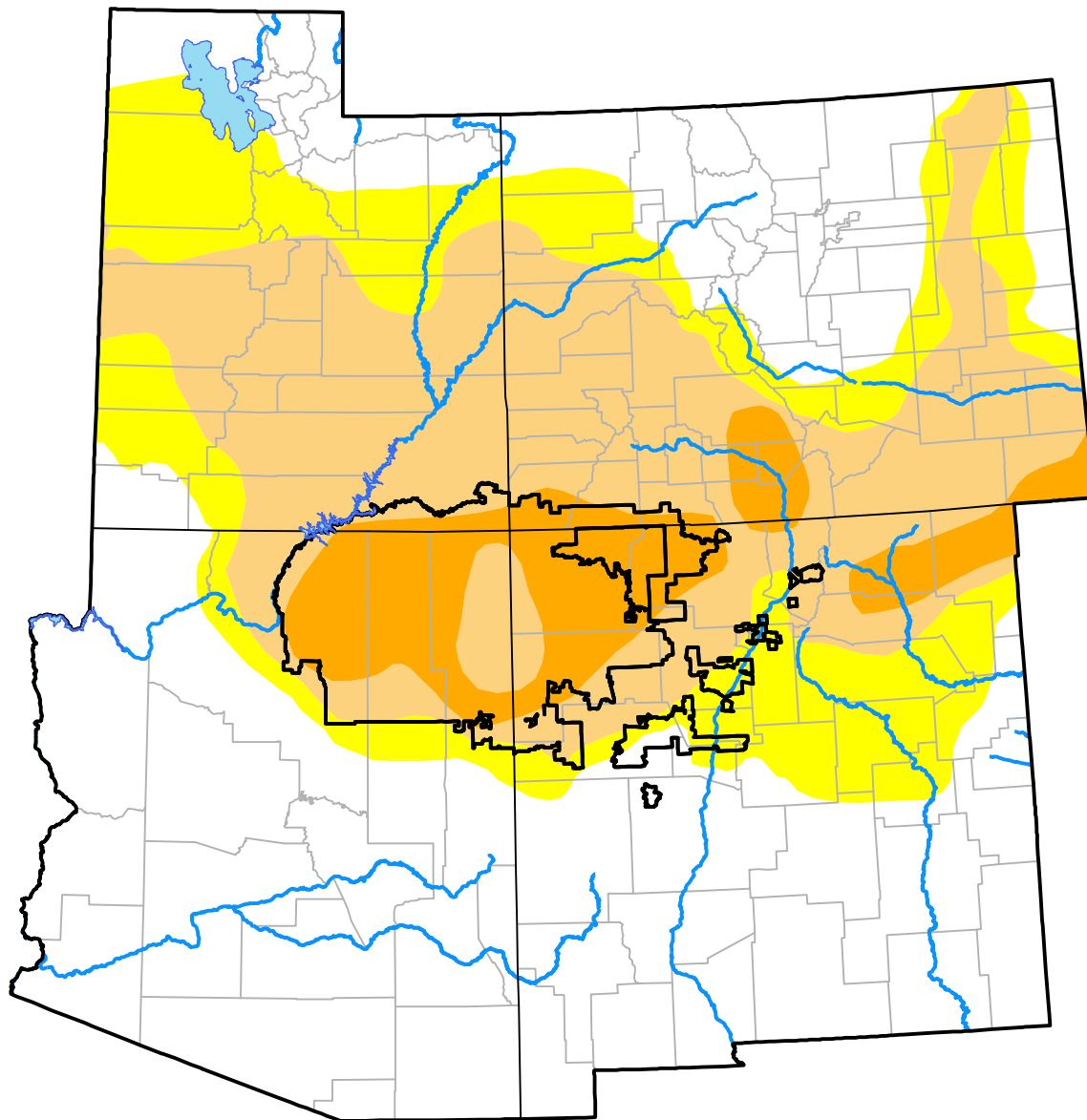


U.S. Drought Monitor

Four Corners RDEWS

April 7, 2020
 (Released Thursday, Apr. 9, 2020)
 Valid 8 a.m. EDT



Drought Conditions (Percent Area)

	None	D0	D1	D2	D3	D4
Current	2.04	5.80	32.50	59.66	0.00	0.00
Last Week <i>04-02-2020</i>	2.04	5.80	32.50	59.66	0.00	0.00
3 Months Ago <i>01-09-2020</i>	0.00	5.87	24.17	69.96	0.00	0.00
Start of Calendar Year <i>01-02-2020</i>	0.00	5.87	13.97	80.16	0.00	0.00
Start of Water Year <i>10-03-2019</i>	5.61	5.12	47.42	41.85	0.00	0.00
One Year Ago <i>04-11-2019</i>	5.42	39.55	32.19	22.84	0.00	0.00

Intensity:



The Drought Monitor focuses on broad-scale conditions. Local conditions may vary. For more information on the Drought Monitor, go to <https://droughtmonitor.unl.edu/About.aspx>

Author:

David Simeral
 Western Regional Climate Center

