

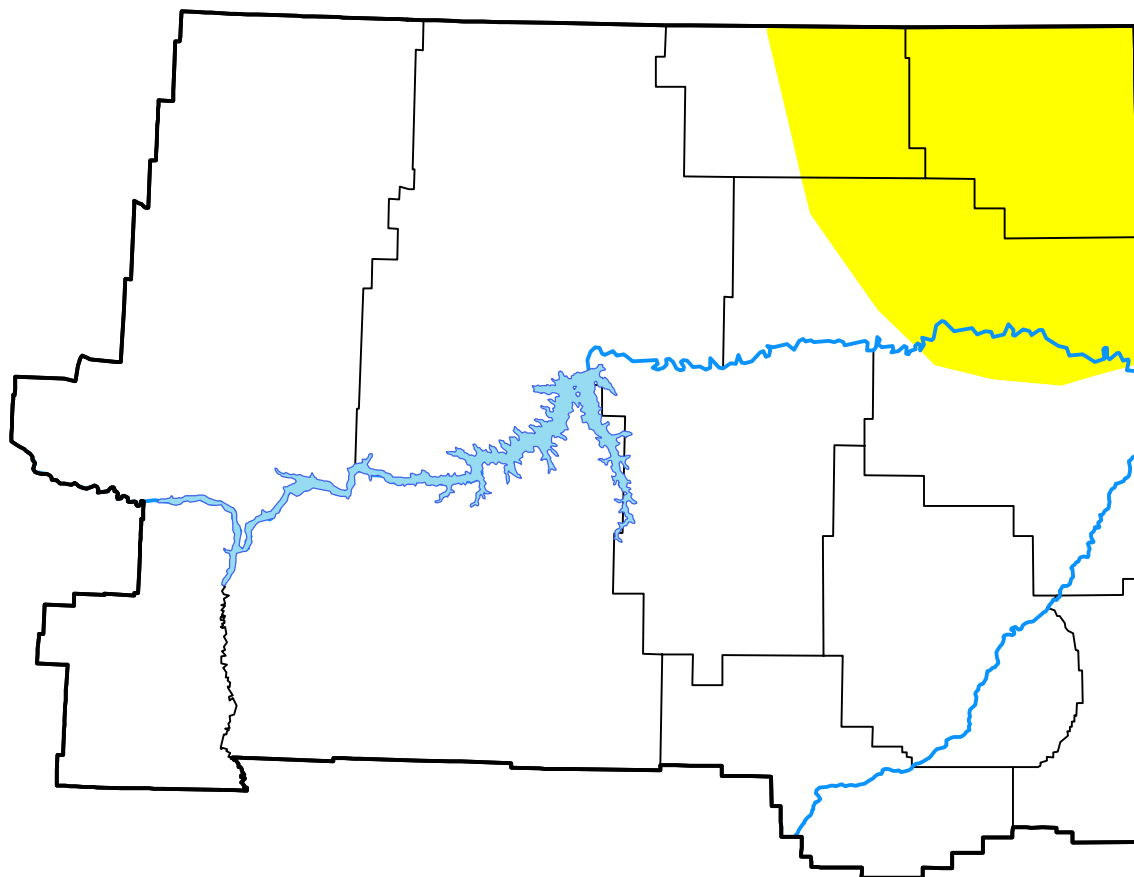
# U.S. Drought Monitor

## Glasgow, MT WFO

**April 7, 2020**  
 (Released Thursday, Apr. 9, 2020)  
 Valid 8 a.m. EDT

### Drought Conditions (Percent Area)

	None	D0-D4	D1-D4	D2-D4	D3-D4	D4
<b>Current</b>	86.50	13.50	0.00	0.00	0.00	0.00
<b>Last Week</b> <i>04-02-2020</i>	96.94	3.06	0.00	0.00	0.00	0.00
<b>3 Months Ago</b> <i>01-09-2020</i>	100.00	0.00	0.00	0.00	0.00	0.00
<b>Start of Calendar Year</b> <i>01-02-2020</i>	100.00	0.00	0.00	0.00	0.00	0.00
<b>Start of Water Year</b> <i>10-03-2019</i>	100.00	0.00	0.00	0.00	0.00	0.00
<b>One Year Ago</b> <i>04-11-2019</i>	100.00	0.00	0.00	0.00	0.00	0.00



### Intensity:



The Drought Monitor focuses on broad-scale conditions. Local conditions may vary. For more information on the Drought Monitor, go to <https://droughtmonitor.unl.edu/About.aspx>

### Author:

David Simeral  
 Western Regional Climate Center



[droughtmonitor.unl.edu](https://droughtmonitor.unl.edu)