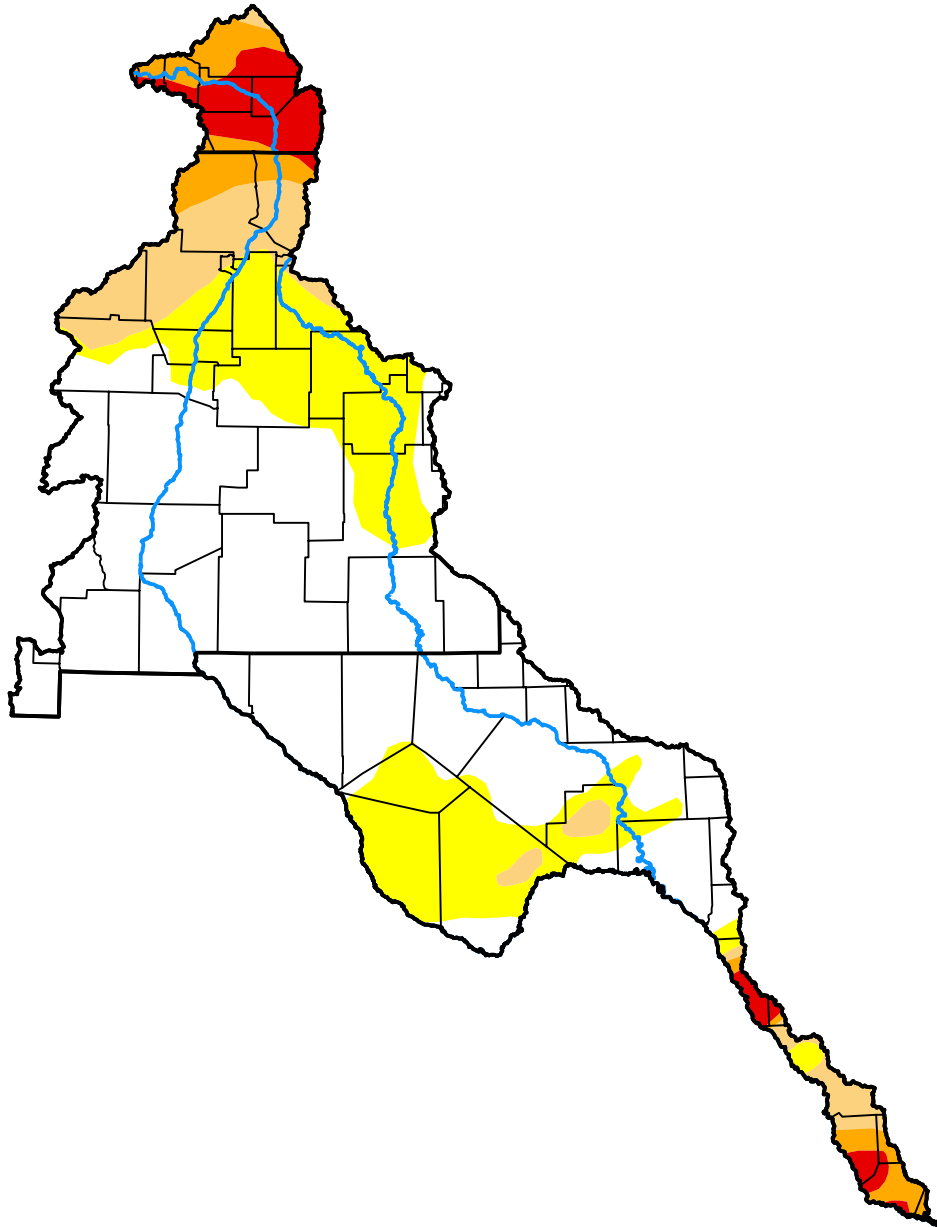


U.S. Drought Monitor

Rio Grande Watershed

May 5, 2020
 (Released Thursday, May. 7, 2020)
 Valid 8 a.m. EDT



Drought Conditions (Percent Area)

	None	D0-D4	D1-D4	D2-D4	D3-D4	D4
Current	57.68	42.32	18.28	9.49	4.66	0.00
Last Week <i>04-30-2020</i>	63.09	36.91	17.51	7.78	0.95	0.00
3 Months Ago <i>02-06-2020</i>	40.95	59.05	23.24	3.94	0.46	0.00
Start of Calendar Year <i>01-02-2020</i>	65.64	34.36	20.60	7.60	0.19	0.00
Start of Water Year <i>10-03-2019</i>	45.22	54.78	21.48	4.36	0.96	0.00
One Year Ago <i>05-09-2019</i>	73.90	26.10	9.06	0.00	0.00	0.00

Intensity:

- None
- D0 Abnormally Dry
- D1 Moderate Drought
- D2 Severe Drought
- D3 Extreme Drought
- D4 Exceptional Drought

The Drought Monitor focuses on broad-scale conditions. Local conditions may vary. For more information on the Drought Monitor, go to <https://droughtmonitor.unl.edu/About.aspx>

Author:

Brad Pugh
 CPC/NOAA



droughtmonitor.unl.edu