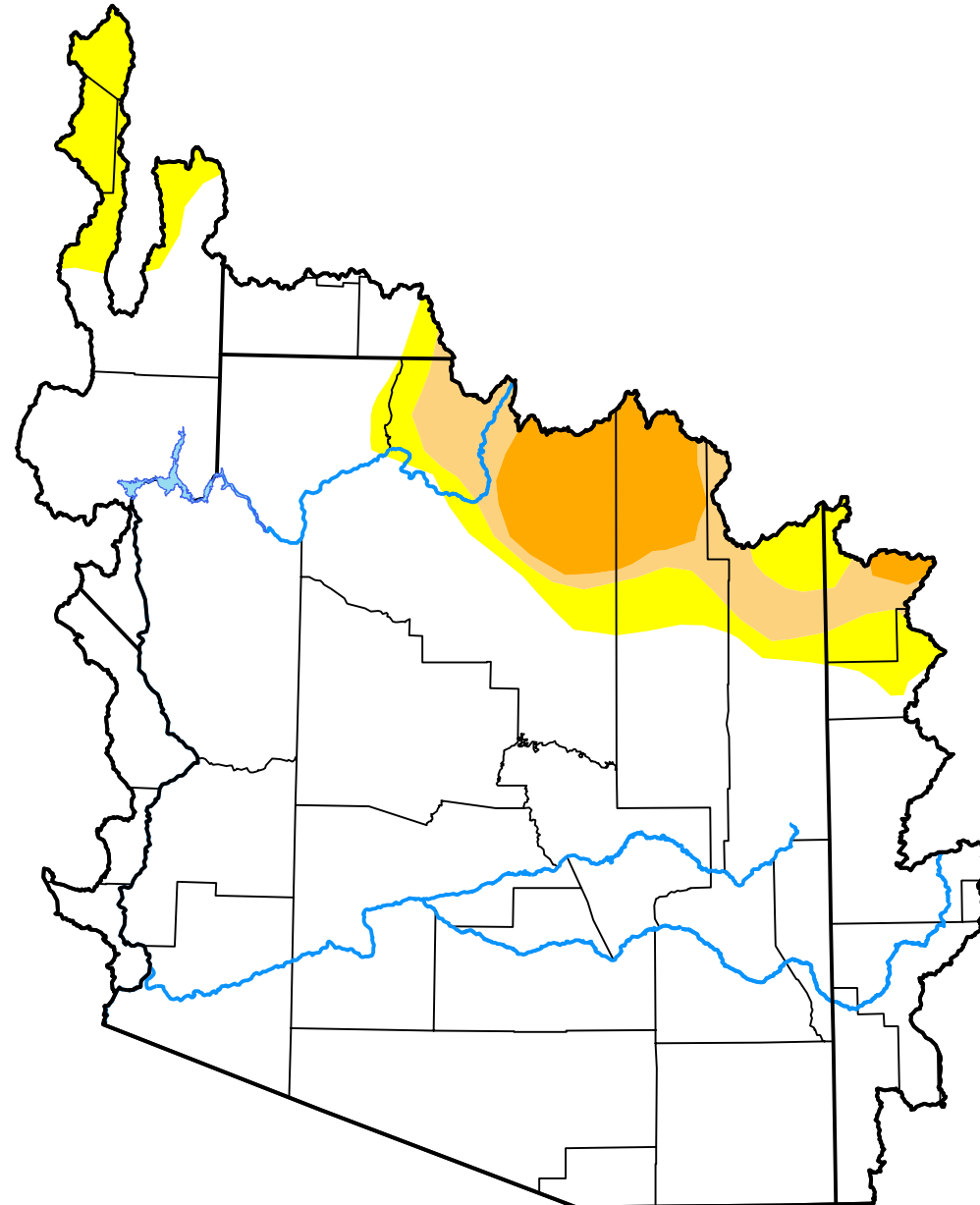


# U.S. Drought Monitor

## Lower Colorado Watershed



**May 5, 2020**  
 (Released Thursday, May. 7, 2020)  
 Valid 8 a.m. EDT

*Drought Conditions (Percent Area)*

	None	D0-D4	D1-D4	D2-D4	D3-D4	D4
<b>Current</b>	84.71	15.29	8.28	4.35	0.00	0.00
<b>Last Week</b> <i>04-30-2020</i>	84.71	15.29	8.28	4.35	0.00	0.00
<b>3 Months Ago</b> <i>02-06-2020</i>	72.72	27.28	17.85	9.22	0.00	0.00
<b>Start of Calendar Year</b> <i>01-02-2020</i>	72.72	27.28	17.85	9.69	0.00	0.00
<b>Start of Water Year</b> <i>10-03-2019</i>	6.82	93.18	77.62	22.04	0.00	0.00
<b>One Year Ago</b> <i>05-09-2019</i>	84.18	15.82	5.39	0.00	0.00	0.00

Intensity:

- None
- D0 Abnormally Dry
- D1 Moderate Drought
- D2 Severe Drought
- D3 Extreme Drought
- D4 Exceptional Drought

*The Drought Monitor focuses on broad-scale conditions. Local conditions may vary. For more information on the Drought Monitor, go to <https://droughtmonitor.unl.edu/About.aspx>*

Author:

Brad Pugh  
 CPC/NOAA

