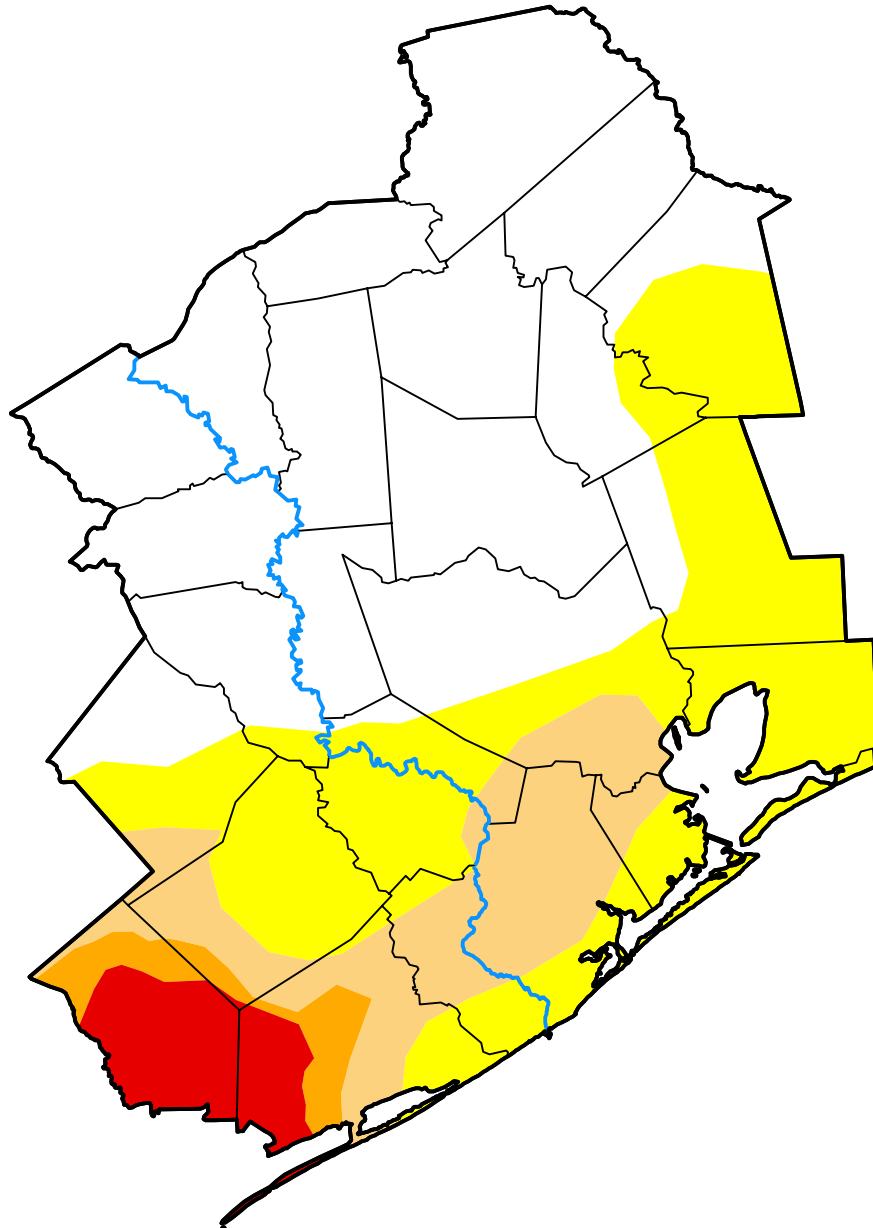


# U.S. Drought Monitor

## Houston/Galveston, TX WFO

**May 5, 2020**  
 (Released Thursday, May. 7, 2020)  
 Valid 8 a.m. EDT



*Drought Conditions (Percent Area)*

	None	D0	D1	D2	D3	D4
<b>Current</b>	53.21	27.93	12.18	2.39	4.29	0.00
<b>Last Week</b> <i>04-30-2020</i>	48.48	11.31	23.59	10.20	6.43	0.00
<b>3 Months Ago</b> <i>02-06-2020</i>	9.02	11.83	54.42	24.73	0.00	0.00
<b>Start of Calendar Year</b> <i>01-02-2020</i>	25.55	32.72	36.84	4.89	0.00	0.00
<b>Start of Water Year</b> <i>10-03-2019</i>	49.22	21.34	22.97	6.15	0.32	0.00
<b>One Year Ago</b> <i>05-09-2019</i>	87.21	12.79	0.00	0.00	0.00	0.00

***Intensity:***

- None
- D0 Abnormally Dry
- D1 Moderate Drought
- D2 Severe Drought
- D3 Extreme Drought
- D4 Exceptional Drought

*The Drought Monitor focuses on broad-scale conditions. Local conditions may vary. For more information on the Drought Monitor, go to <https://droughtmonitor.unl.edu/About.aspx>*

***Author:***

Brad Pugh  
 CPC/NOAA

