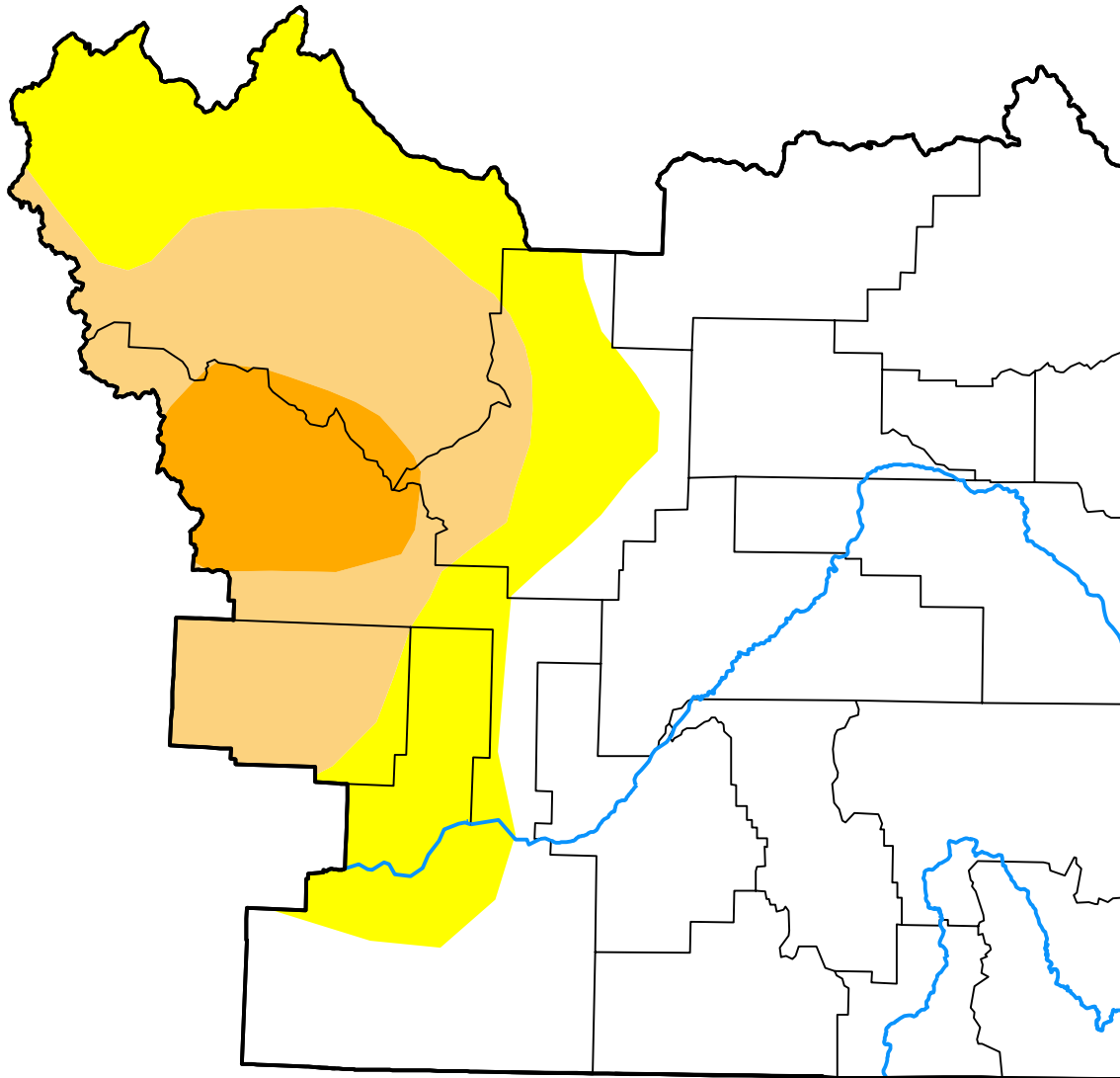


U.S. Drought Monitor

Pocatello, ID WFO

May 5, 2020
 (Released Thursday, May. 7, 2020)
 Valid 8 a.m. EDT



Drought Conditions (Percent Area)

	None	D0-D4	D1-D4	D2-D4	D3-D4	D4
Current	63.85	36.15	19.00	4.72	0.00	0.00
Last Week <i>04-30-2020</i>	63.85	36.15	19.00	4.72	0.00	0.00
3 Months Ago <i>02-06-2020</i>	66.50	33.50	15.09	0.00	0.00	0.00
Start of Calendar Year <i>01-02-2020</i>	62.55	37.45	0.07	0.00	0.00	0.00
Start of Water Year <i>10-03-2019</i>	100.00	0.00	0.00	0.00	0.00	0.00
One Year Ago <i>05-09-2019</i>	99.99	0.01	0.00	0.00	0.00	0.00

Intensity:

- None
- D0 Abnormally Dry
- D1 Moderate Drought
- D2 Severe Drought
- D3 Extreme Drought
- D4 Exceptional Drought

The Drought Monitor focuses on broad-scale conditions. Local conditions may vary. For more information on the Drought Monitor, go to <https://droughtmonitor.unl.edu/About.aspx>

Author:

Brad Pugh
 CPC/NOAA

