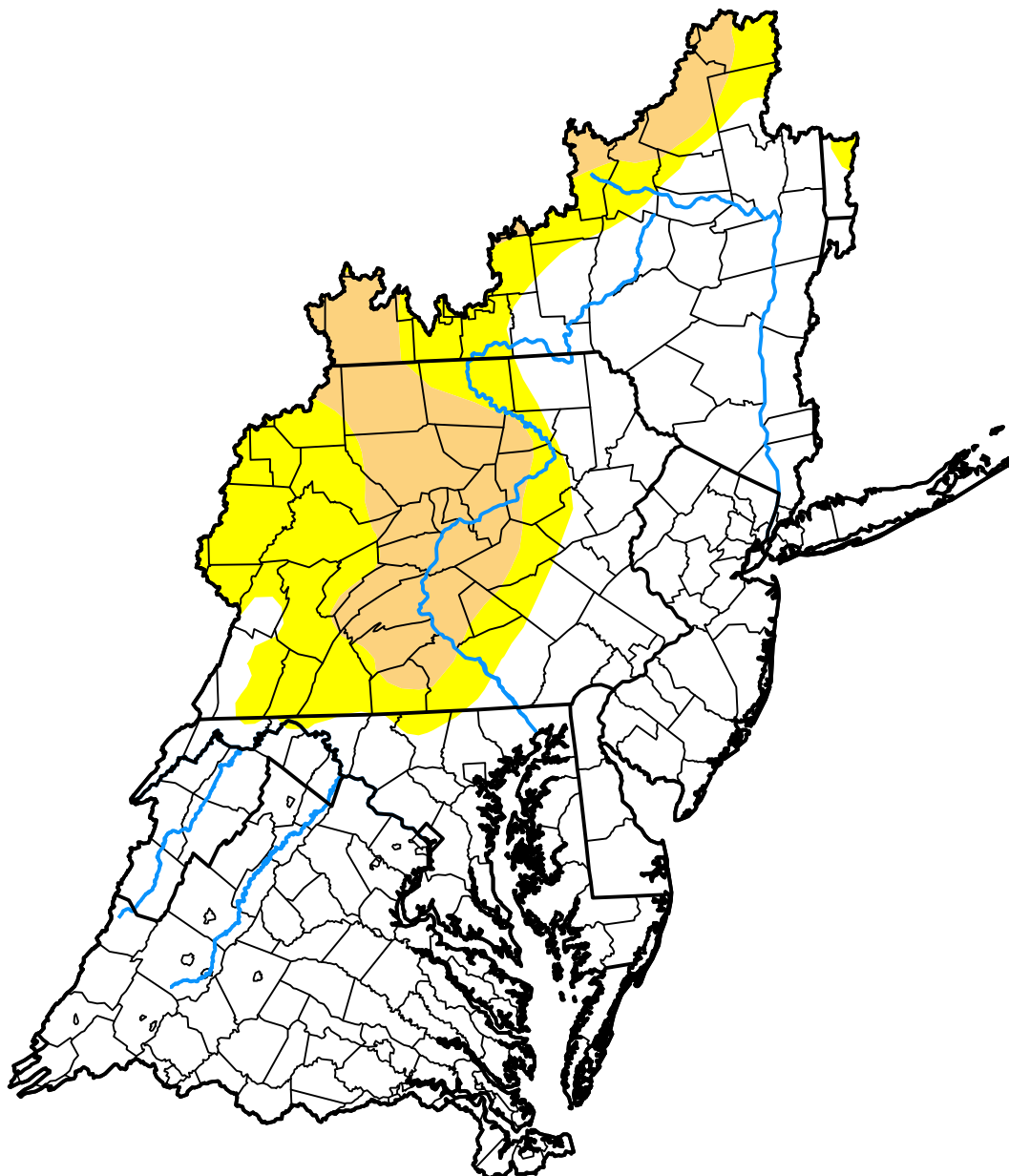


U.S. Drought Monitor

Mid Atlantic Watershed

December 8, 2020
 (Released Thursday, Dec. 10, 2020)

Valid 7 a.m. EST



Drought Conditions (Percent Area)

	None	D0-D4	D1-D4	D2-D4	D3-D4	D4
Current	71.08	28.92	12.36	0.00	0.00	0.00
Last Week <i>12-03-2020</i>	71.16	28.84	13.51	0.00	0.00	0.00
3 Months Ago <i>09-10-2020</i>	82.48	17.52	6.20	0.00	0.00	0.00
Start of Calendar Year <i>01-02-2020</i>	98.95	1.05	0.00	0.00	0.00	0.00
Start of Water Year <i>10-01-2020</i>	64.17	35.83	15.03	3.89	0.00	0.00
One Year Ago <i>12-12-2019</i>	96.73	3.27	0.00	0.00	0.00	0.00

Intensity:



The Drought Monitor focuses on broad-scale conditions. Local conditions may vary. For more information on the Drought Monitor, go to <https://droughtmonitor.unl.edu/About.aspx>

Author:

David Simeral
 Western Regional Climate Center



droughtmonitor.unl.edu