

# U.S. Drought Monitor

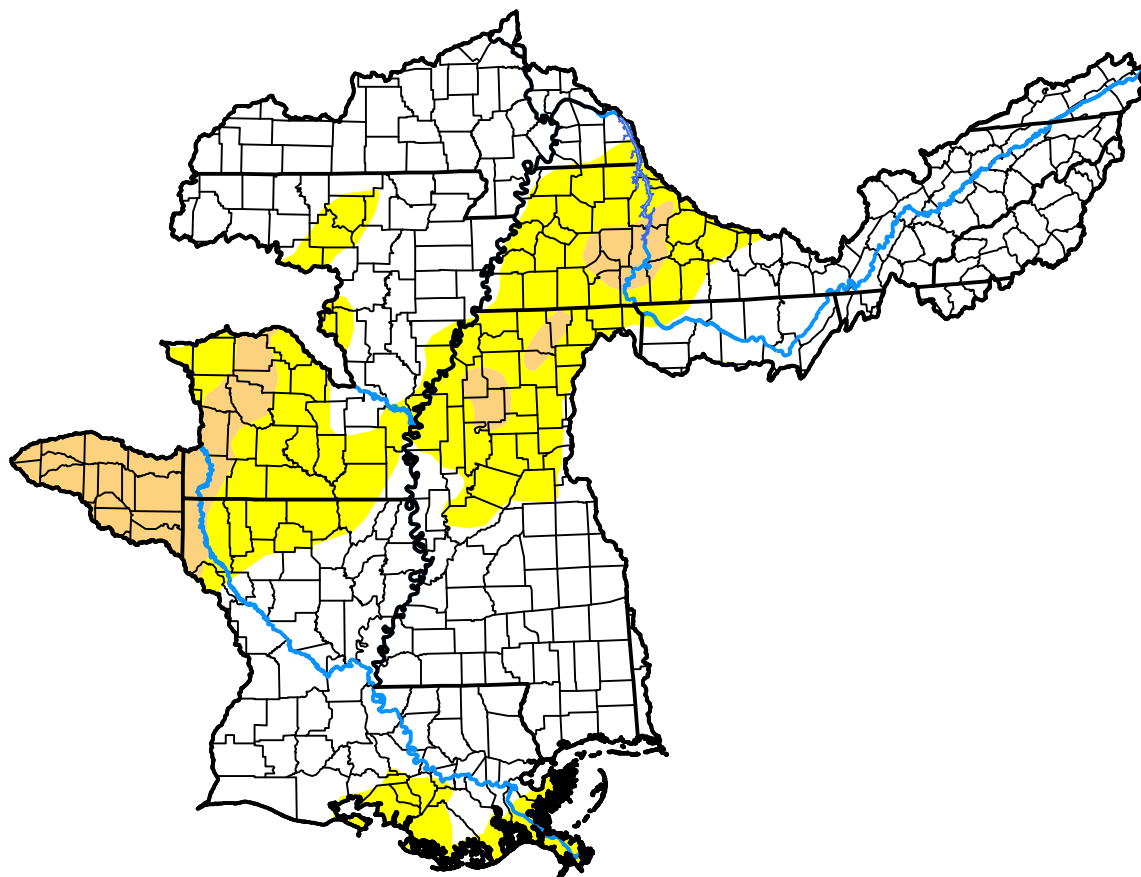
## Lower Mississippi RFC

**December 8, 2020**  
 (Released Thursday, Dec. 10, 2020)

Valid 7 a.m. EST

*Drought Conditions (Percent Area)*

	None	D0	D1	D2	D3	D4
<b>Current</b>	67.21	24.74	8.05	0.00	0.00	0.00
<b>Last Week</b> <i>12-03-2020</i>	73.13	19.03	7.85	0.00	0.00	0.00
<b>3 Months Ago</b> <i>09-10-2020</i>	88.58	9.56	1.66	0.20	0.00	0.00
<b>Start of Calendar Year</b> <i>01-02-2020</i>	83.64	12.05	3.64	0.68	0.00	0.00
<b>Start of Water Year</b> <i>10-01-2020</i>	91.29	7.35	0.65	0.71	0.00	0.00
<b>One Year Ago</b> <i>12-12-2019</i>	84.52	11.40	4.09	0.00	0.00	0.00



***Intensity:***



*The Drought Monitor focuses on broad-scale conditions. Local conditions may vary. For more information on the Drought Monitor, go to <https://droughtmonitor.unl.edu/About.aspx>*

***Author:***

David Simeral  
 Western Regional Climate Center



**droughtmonitor.unl.edu**