

U.S. Drought Monitor

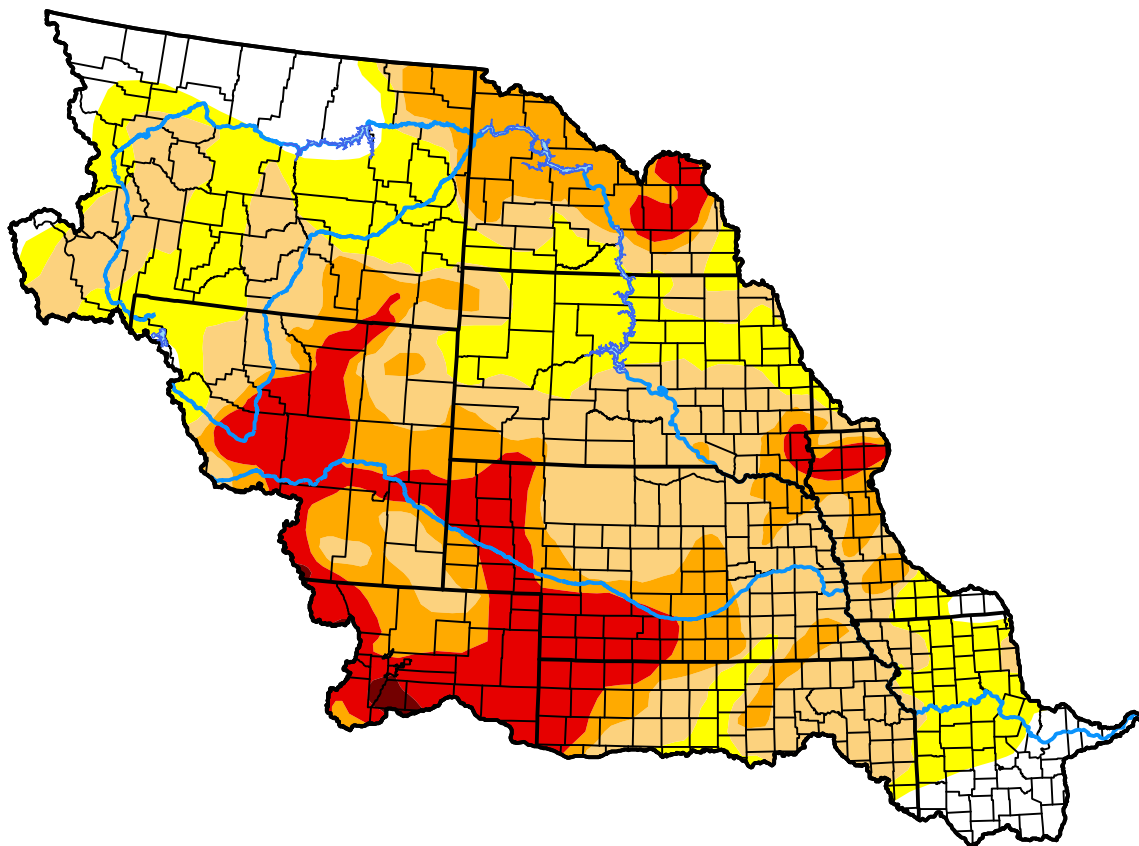
Missouri Basin RFC

December 8, 2020
 (Released Thursday, Dec. 10, 2020)

Valid 7 a.m. EST

Drought Conditions (Percent Area)

	None	D0	D1	D2	D3	D4
Current	9.09	22.92	33.50	19.41	14.74	0.34
Last Week <i>12-03-2020</i>	9.37	24.20	33.03	18.32	14.88	0.20
3 Months Ago <i>09-10-2020</i>	25.09	35.04	20.13	13.31	6.43	0.00
Start of Calendar Year <i>01-02-2020</i>	96.29	3.71	0.00	0.00	0.00	0.00
Start of Water Year <i>10-01-2020</i>	11.52	36.66	29.31	16.94	5.58	0.00
One Year Ago <i>12-12-2019</i>	95.72	4.18	0.10	0.00	0.00	0.00



Intensity:

- None
- D0 Abnormally Dry
- D1 Moderate Drought
- D2 Severe Drought
- D3 Extreme Drought
- D4 Exceptional Drought

The Drought Monitor focuses on broad-scale conditions. Local conditions may vary. For more information on the Drought Monitor, go to <https://droughtmonitor.unl.edu/About.aspx>

Author:

David Simeral
 Western Regional Climate Center

