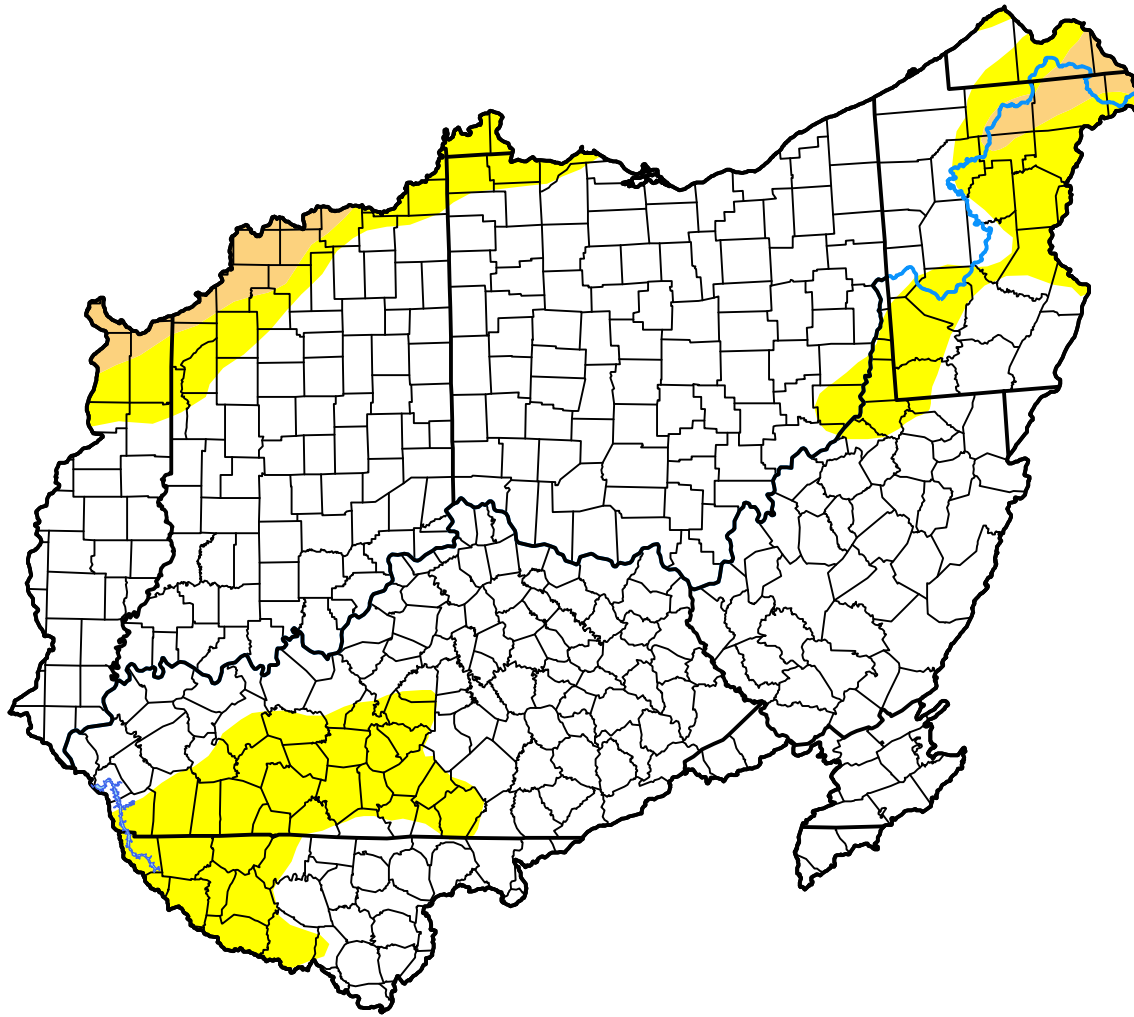


U.S. Drought Monitor

Ohio RFC

December 8, 2020
 (Released Thursday, Dec. 10, 2020)
 Valid 7 a.m. EST



Drought Conditions (Percent Area)

	None	D0-D4	D1-D4	D2-D4	D3-D4	D4
Current	81.32	18.68	2.47	0.00	0.00	0.00
Last Week <i>12-03-2020</i>	87.67	12.33	2.94	0.00	0.00	0.00
3 Months Ago <i>09-10-2020</i>	78.41	21.59	2.19	0.00	0.00	0.00
Start of Calendar Year <i>01-02-2020</i>	99.25	0.75	0.00	0.00	0.00	0.00
Start of Water Year <i>10-01-2020</i>	62.14	37.86	8.35	0.03	0.00	0.00
One Year Ago <i>12-12-2019</i>	100.00	0.00	0.00	0.00	0.00	0.00

Intensity:

- None
- D0 Abnormally Dry
- D1 Moderate Drought
- D2 Severe Drought
- D3 Extreme Drought
- D4 Exceptional Drought

The Drought Monitor focuses on broad-scale conditions. Local conditions may vary. For more information on the Drought Monitor, go to <https://droughtmonitor.unl.edu/About.aspx>

Author:

David Simeral
 Western Regional Climate Center

