

U.S. Drought Monitor

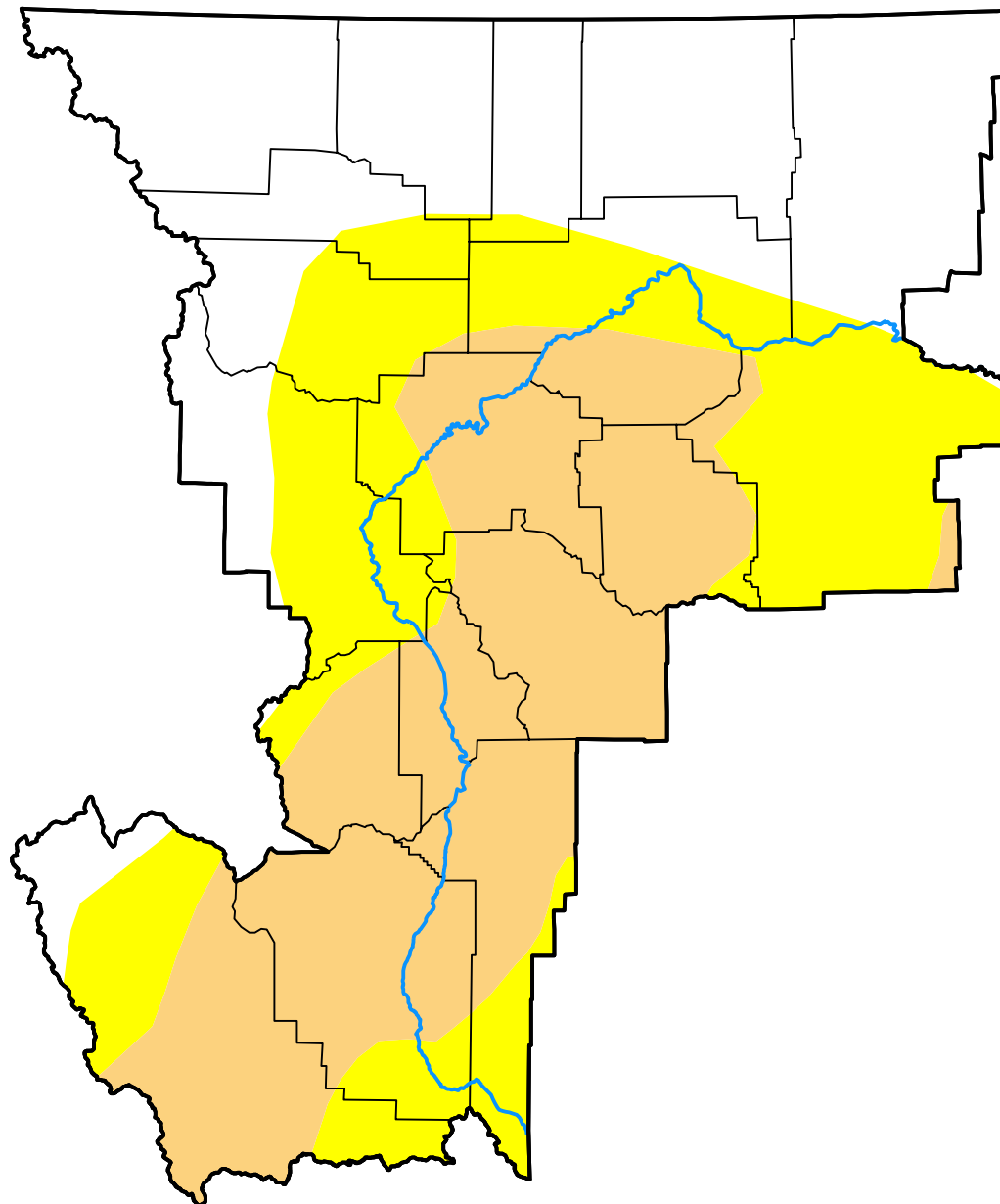
Great Falls, MT WFO

December 8, 2020
 (Released Thursday, Dec. 10, 2020)

Valid 7 a.m. EST

Drought Conditions (Percent Area)

	None	D0	D1	D2	D3	D4
Current	35.81	29.19	35.01	0.00	0.00	0.00
Last Week <i>12-03-2020</i>	35.24	29.75	35.01	0.00	0.00	0.00
3 Months Ago <i>09-10-2020</i>	5.12	71.44	23.44	0.00	0.00	0.00
Start of Calendar Year <i>01-02-2020</i>	96.00	4.00	0.00	0.00	0.00	0.00
Start of Water Year <i>10-01-2020</i>	1.08	47.74	51.17	0.00	0.00	0.00
One Year Ago <i>12-12-2019</i>	100.00	0.00	0.00	0.00	0.00	0.00



Intensity:

- None
- D0 Abnormally Dry
- D1 Moderate Drought
- D2 Severe Drought
- D3 Extreme Drought
- D4 Exceptional Drought

The Drought Monitor focuses on broad-scale conditions. Local conditions may vary. For more information on the Drought Monitor, go to <https://droughtmonitor.unl.edu/About.aspx>

Author:

David Simeral
 Western Regional Climate Center

