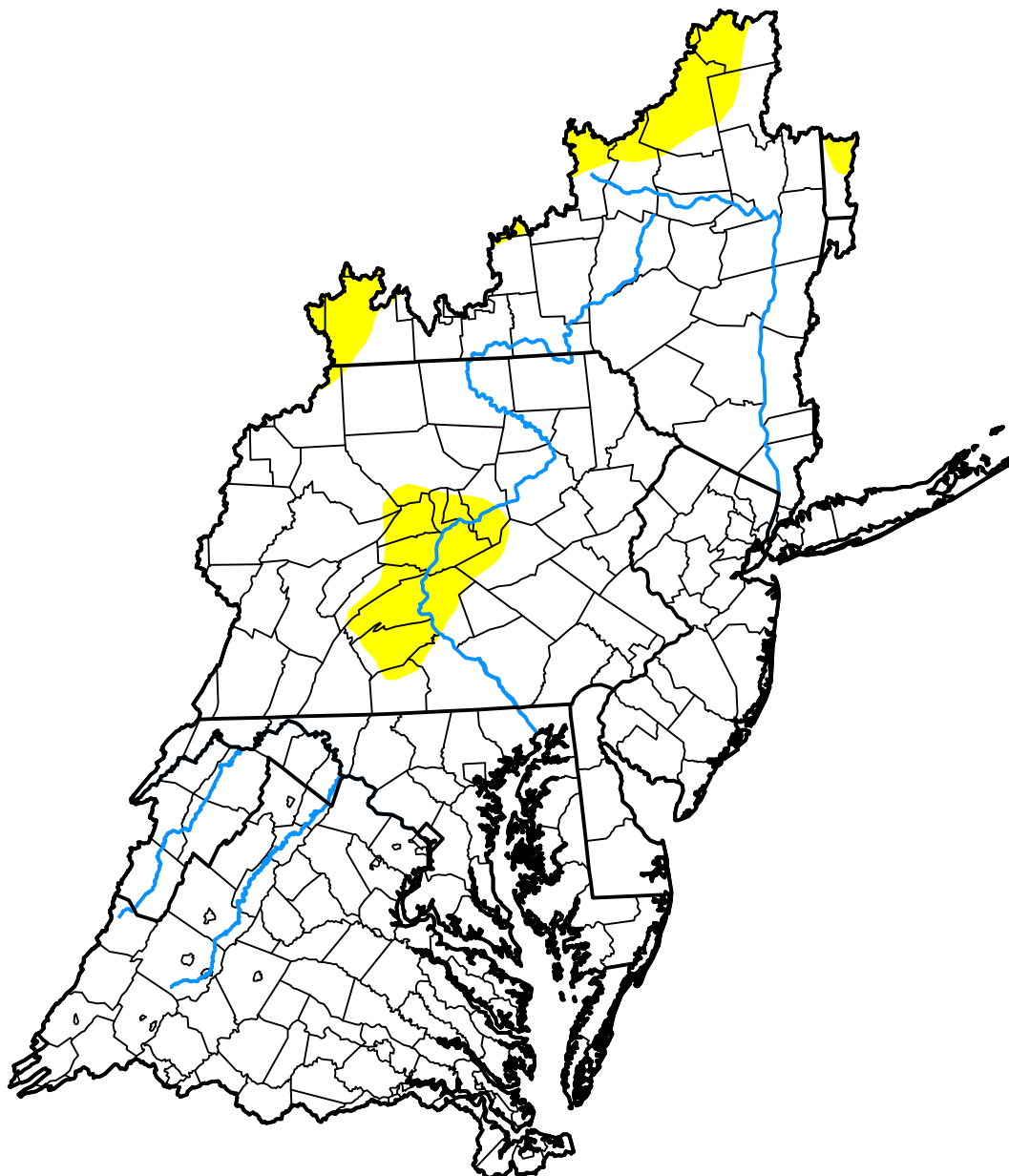


U.S. Drought Monitor

Mid Atlantic Watershed

January 12, 2021
 (Released Thursday, Jan. 14, 2021)

Valid 7 a.m. EST



Drought Conditions (Percent Area)

| | None | D0 | D1 | D2 | D3 | D4 |
|--|-------|-------|-------|------|------|------|
| Current | 92.94 | 7.05 | 0.01 | 0.00 | 0.00 | 0.00 |
| Last Week <i>01-07-2021</i> | 92.92 | 7.06 | 0.01 | 0.00 | 0.00 | 0.00 |
| 3 Months Ago <i>10-15-2020</i> | 69.13 | 12.31 | 14.04 | 4.51 | 0.01 | 0.00 |
| Start of Calendar Year <i>12-31-2020</i> | 87.15 | 12.83 | 0.01 | 0.00 | 0.00 | 0.00 |
| Start of Water Year <i>10-01-2020</i> | 64.17 | 20.81 | 11.14 | 3.89 | 0.00 | 0.00 |
| One Year Ago <i>01-16-2020</i> | 98.58 | 1.42 | 0.00 | 0.00 | 0.00 | 0.00 |

Intensity:



The Drought Monitor focuses on broad-scale conditions. Local conditions may vary. For more information on the Drought Monitor, go to <https://droughtmonitor.unl.edu/About.aspx>

Author:

Deborah Bathke
 National Drought Mitigation Center

