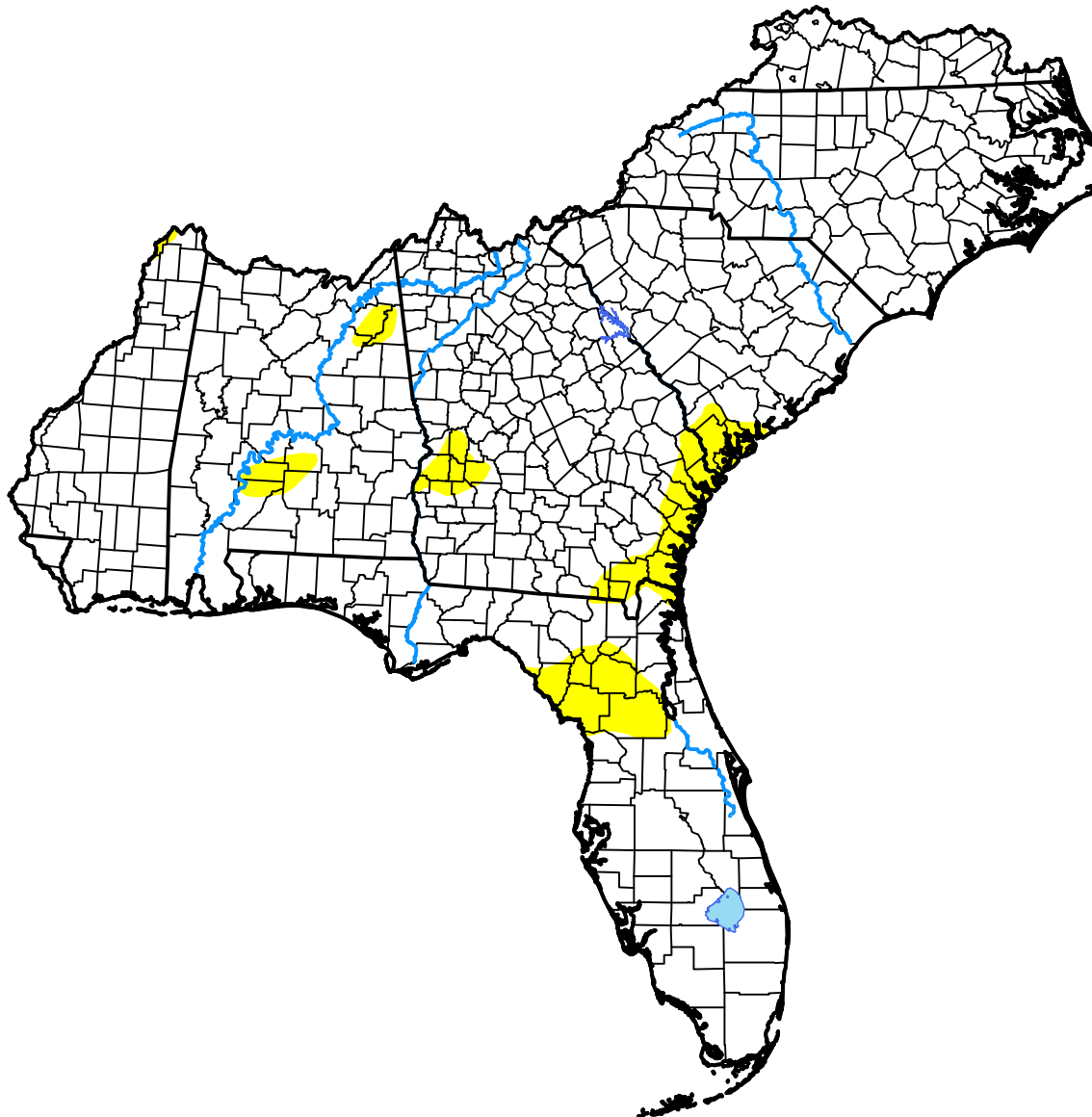


# U.S. Drought Monitor

## South Atlantic-Gulf Watershed

January 12, 2021  
 (Released Thursday, Jan. 14, 2021)  
 Valid 7 a.m. EST



Drought Conditions (Percent Area)

	None	D0	D1	D2	D3	D4
<b>Current</b>	93.75	6.25	0.00	0.00	0.00	0.00
<b>Last Week</b> <i>01-07-2021</i>	93.93	6.07	0.00	0.00	0.00	0.00
<b>3 Months Ago</b> <i>10-15-2020</i>	97.23	2.77	0.00	0.00	0.00	0.00
<b>Start of Calendar Year</b> <i>12-31-2020</i>	86.95	13.05	0.00	0.00	0.00	0.00
<b>Start of Water Year</b> <i>10-01-2020</i>	96.65	3.35	0.00	0.00	0.00	0.00
<b>One Year Ago</b> <i>01-16-2020</i>	93.84	5.28	0.87	0.00	0.00	0.00

**Intensity:**



The Drought Monitor focuses on broad-scale conditions. Local conditions may vary. For more information on the Drought Monitor, go to <https://droughtmonitor.unl.edu/About.aspx>

**Author:**

Deborah Bathke  
 National Drought Mitigation Center

