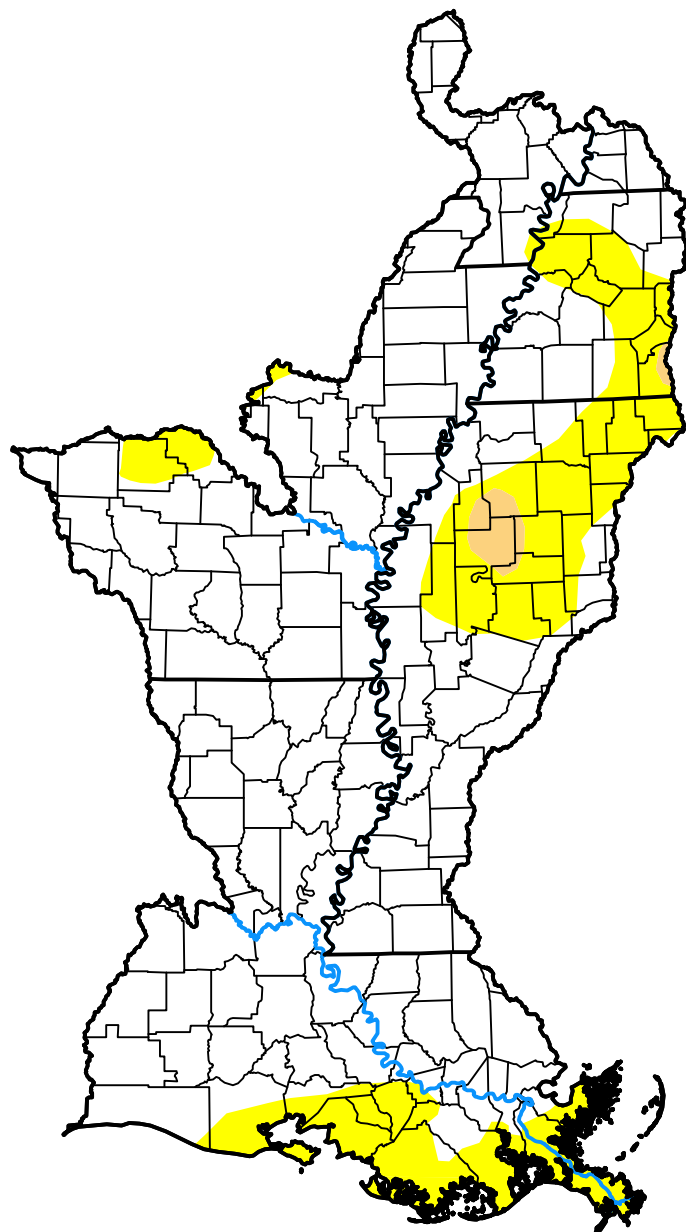


U.S. Drought Monitor

Lower Mississippi Watershed

January 12, 2021
 (Released Thursday, Jan. 14, 2021)

Valid 7 a.m. EST



Drought Conditions (Percent Area)

	None	D0	D1	D2	D3	D4
Current	81.20	17.79	1.02	0.00	0.00	0.00
Last Week <i>01-07-2021</i>	77.57	21.41	1.02	0.00	0.00	0.00
3 Months Ago <i>10-15-2020</i>	98.69	1.31	0.00	0.00	0.00	0.00
Start of Calendar Year <i>12-31-2020</i>	47.36	47.22	5.41	0.00	0.00	0.00
Start of Water Year <i>10-01-2020</i>	96.14	3.86	0.00	0.00	0.00	0.00
One Year Ago <i>01-16-2020</i>	94.81	5.19	0.00	0.00	0.00	0.00

Intensity:



The Drought Monitor focuses on broad-scale conditions. Local conditions may vary. For more information on the Drought Monitor, go to <https://droughtmonitor.unl.edu/About.aspx>

Author:

Deborah Bathke
 National Drought Mitigation Center



droughtmonitor.unl.edu